



OPERATOR & PARTS MANUAL

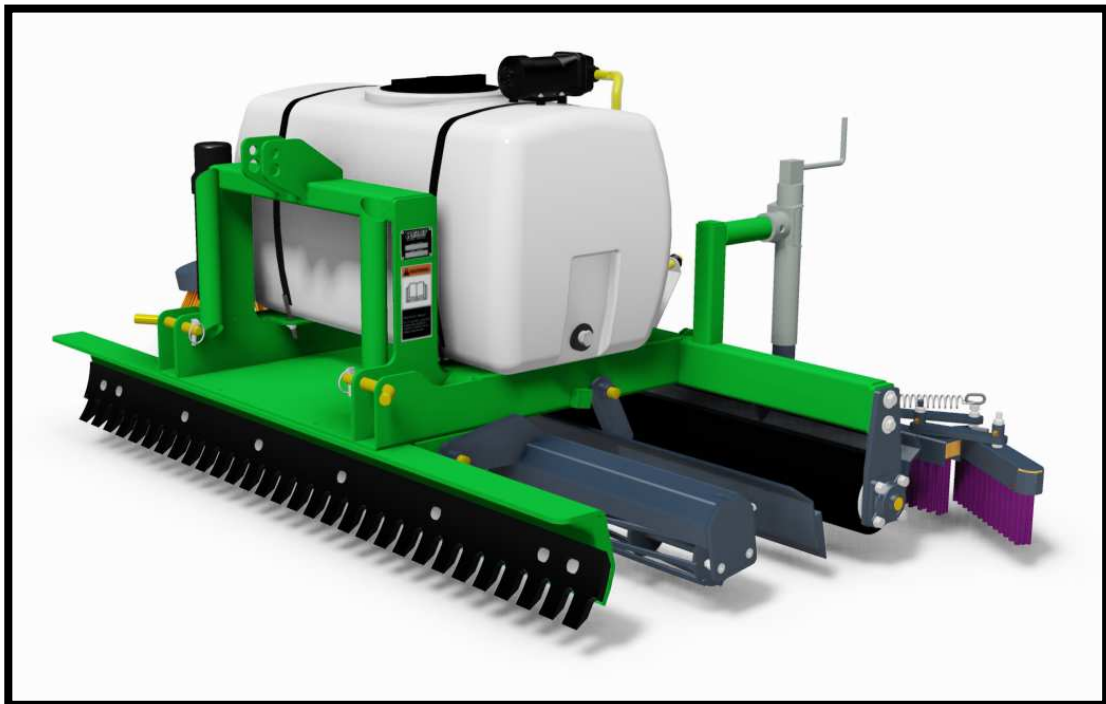


TABLE OF CONTENTS



<u>ITEM</u>	<u>PAGE</u>
INTRODUCTION	3
SAFETY	4 - 5
OPERATION & SETUP INSTRUCTION	6
MAINTENANCE & ADJUSTMENTS	7
SWEEPER INSTRUCTIONS	8
PARTS	9 - 17
WARRANTY	18

MODEL No. _____ SERIAL No. _____

CONGRATULATIONS!

Thank you for choosing the **REIST IN-FIELDER**. We feel confident that this equipment will meet your expectations in workmanship, reliability and performance.

This manual is to assist you with the safe operation of the **IN-FIELDER**, This manual also identifies safety decals and information, maintenance intervals and proper storage instructions.

GENERAL SAFETY

CAUTION



- 1.** Careful operation is the best assurance against accidents. It is the owner's responsibility to make sure that all operators have read this manual before operating the equipment.
- 2.** Familiarize yourself with all controls and always be ready to stop equipment quickly in case of emergency.
- 3.** Never let a child operate machinery.
- 4.** Protect yourself by wearing ear protection.
- 5.** Hydraulic fluids under pressure can damage your skin. Do not use your hands to locate leak.

OPERATING SAFETY



1. For proper safe operation we recommend that the tractor be equipped with an approved Roll-Over Protective Structure and Safety Belt.
2. Do not operate an engine in confined or non ventilated area.
3. Do not perform any adjustments or repairs with engine running.
4. Always lower 3 PTH to ground before performing adjustments or repairs.
5. Do not operate on excessive incline and always be careful when turning on slopes.
6. Never carry passengers on implement or tractor.

TRANSPORT SAFETY

CAUTION



1. Use proper safety lights on public roads.
2. Be alert while driving on road and never carry passengers.
3. Road speed should be such to maintain full control over steering and brakes.

Important Setup & Operation Instructions Before Each Use

- Always use proper pin and bushing sizes when attaching infielder to tractor.
- Make sure that bottom 3 PTH arms are level with tractor and stabilized to centre.
- Lower Infielder to ground, putting 3 PTH lever to max. down position.
- Adjust top link until cutting blade makes ground contact by 1/8 inch.
- Adjust rear brushed to make ground contact plus 1/4 inch.
- With 3 PTH lever in max. down position start grooming at 3 to 5 mi/hr.(5 to 8 km/hr).
- Readjust top link to maintain an average cutting depth of 1/8 inch.
- Use alternative driving patterns as you groom.
- If chatter occurs while grooming SLOW DOWN.

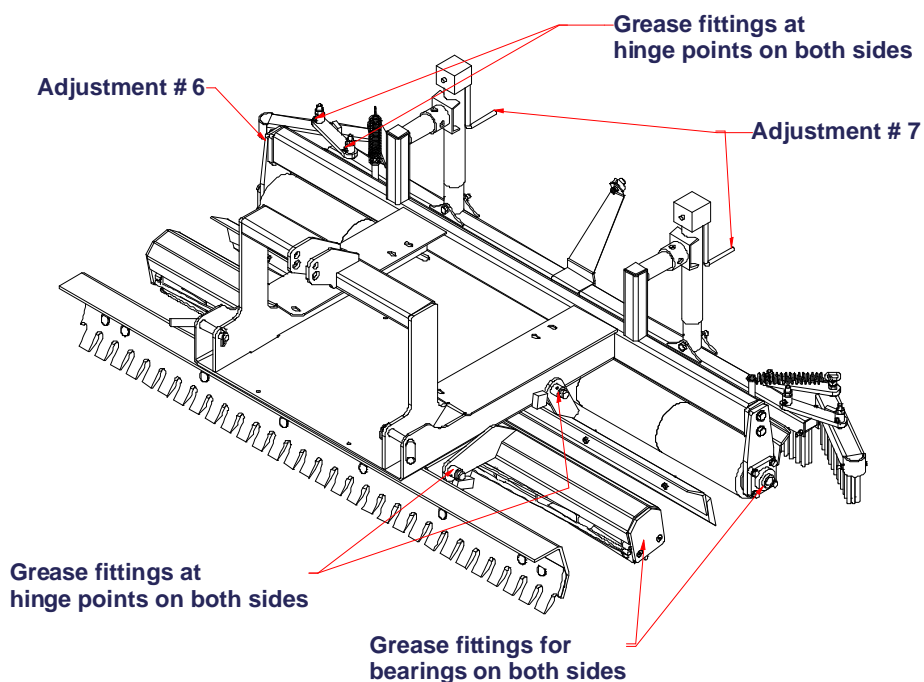
Maintenance Before Use

- Make sure all bolts are tight (tighten if necessary)
- Check for worn, bent or broken parts (replace if necessary).
- Grease bushings and bearings as per manual.

MAINTENANCE & ADJUSTMENTS



1. Clean grease fittings with clean cloth before adding grease to avoid injecting dirt and sand.
2. Replace damaged grease fittings
3. Lubricate bearings at both ends of reel and roller after every 50 hours of use.
4. Lubricate pivot bushings for reel and blade once a day.
5. Check all nuts and bolts after first hour of use and then every day before use.
6. To level rear roller with front blade, put machine on a level cement surface and adjust right side of roller, up or down, as needed.
7. Adjust brush to desired depth with dual adjustment cranks.
(Normally adjusted so brush is lightly sweeping by $\frac{1}{4}$ inch).



SWEEPER INSTRUCTIONS

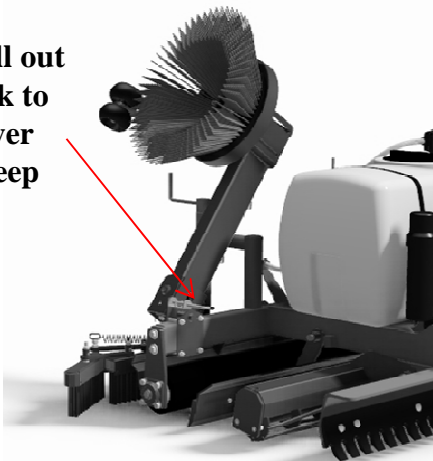


The sweeper option saves time and manual labour. Whether the baseball diamond has clay or stone dust, over time material piles up along the chain link fence, the edge of the grass of the infield, or warning track. The sweeper will brush the clay or stone dust back to where it belongs and leaves a smoother transition from the grass to the clay. The angle of the brush and the gauge wheel are preset but as the brush wears the adjustments will have to be made.

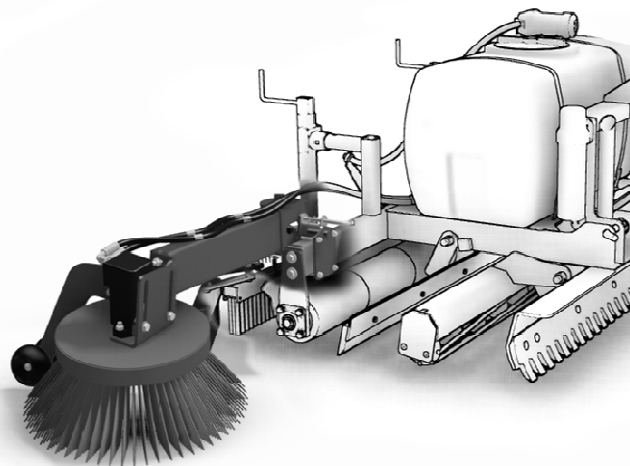
Operation Instructions:

- Lower the brush from transport position
- Lower Infielder so it sits on the back rollers
- Lengthen top link so that front cutting edge is off the ground by an inch or two
- Engage hydraulics so that brush turns counter clock wise
- Increase tractor Rpm to desired brush speed
- Drive along the fence so that the brush is touching the fence, the arm is spring loaded and will spring back
- Along warning track or infield, 80% of the brush should be on the grass to sweep clay or stone dust back in

**Pull out
lock to
lower
sweep**

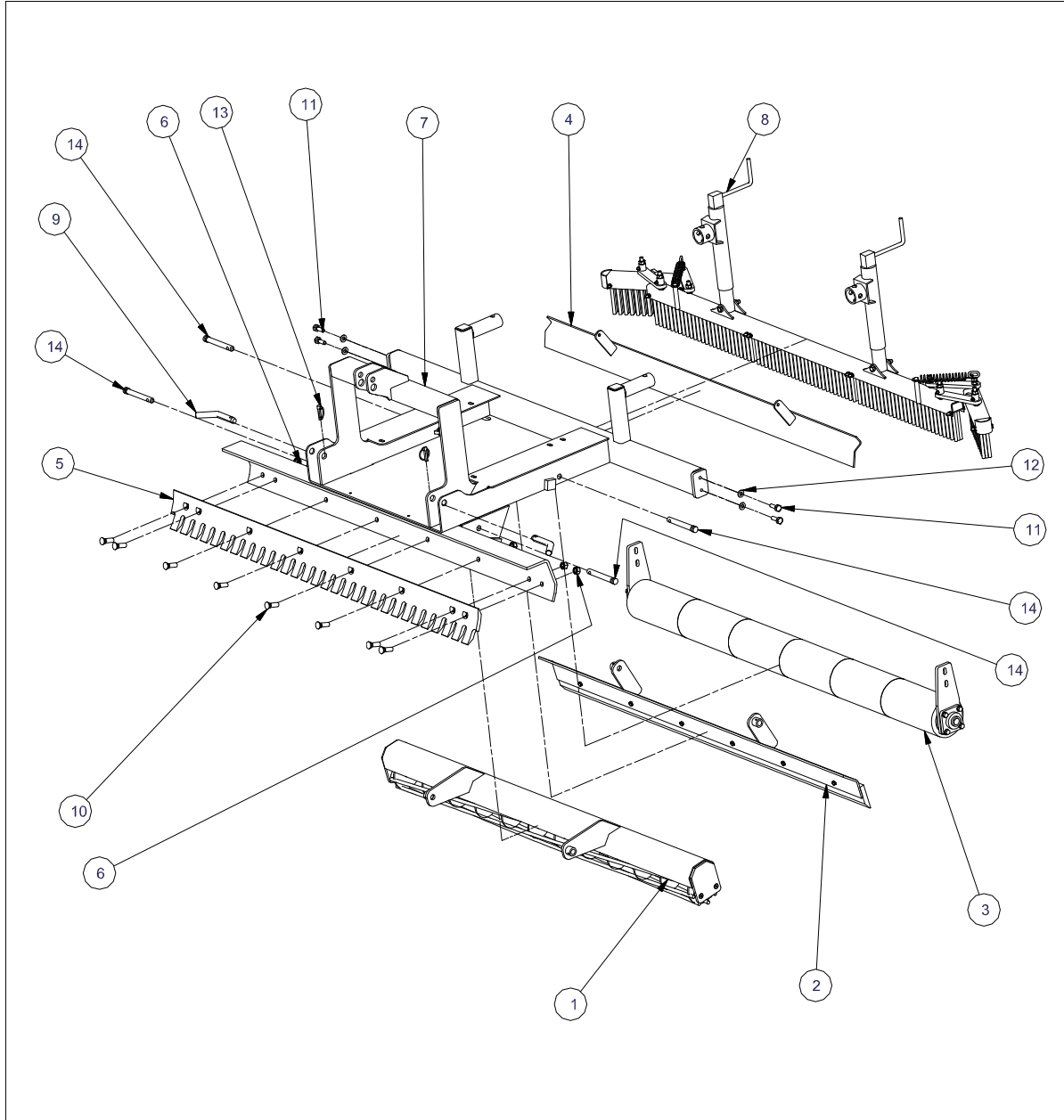


Transport position



Brush direction

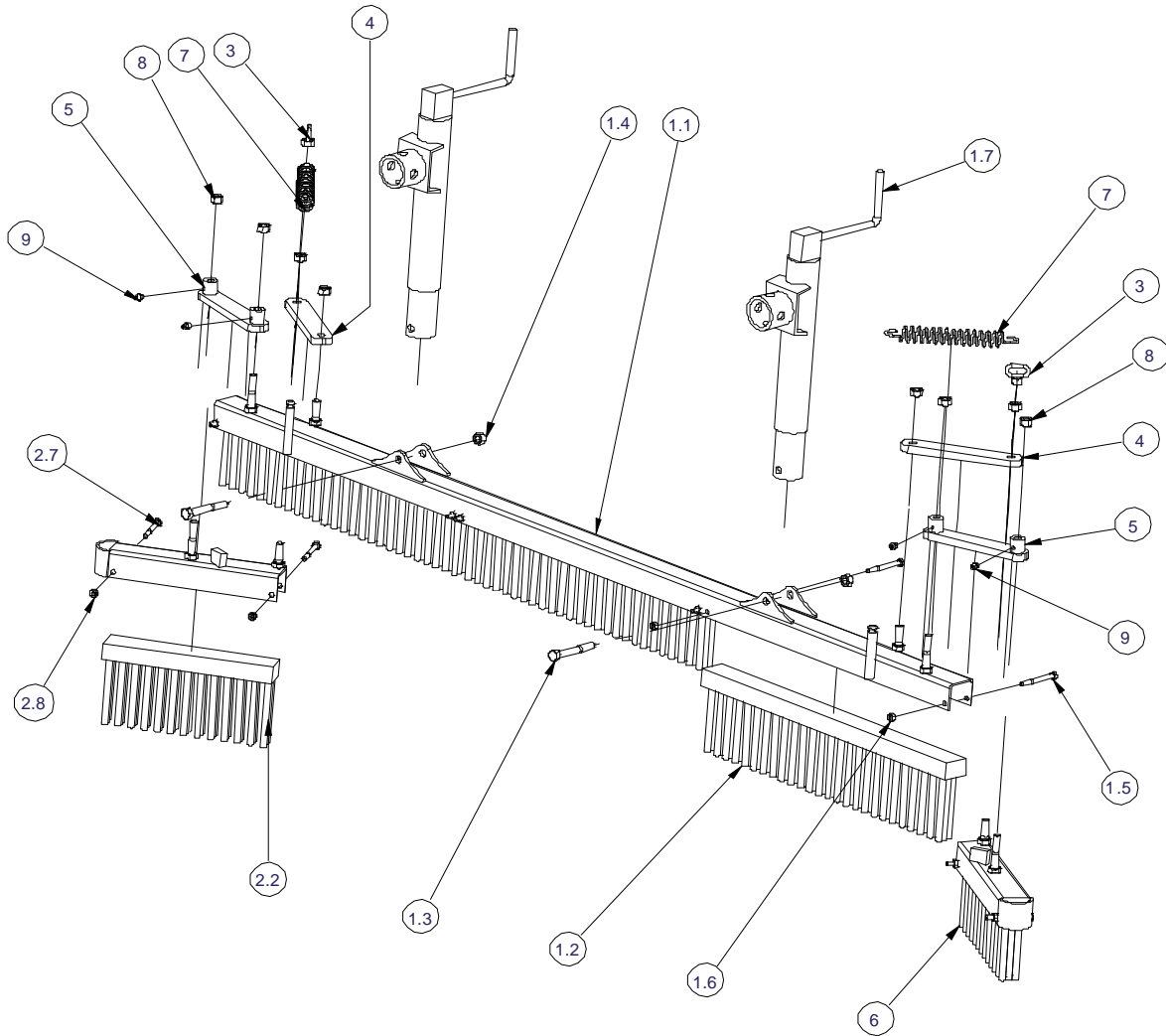
PART NUMBERS and DESCRIPTION



Parts List				Parts List			
ITEM	QTY	Reist Part#	DESCRIPTION	ITEM	QTY	Reist Part#	DESCRIPTION
1	1	2020	Pulverizer Roll Assembly	8	1	2023	Broom Assembly
2	1	2021	Leveler	9	2	CAT1-784	Cat 1 Arm Pin
3	1	2022	Roller Assembly	10	8	5823PB	5/8 x 1-1/2 Plow Bolt
4	1	2018	Scraper Assembly	11	4	12112	1/2x1-1/2 NC Bolt
5	1	58661VS	72" Serated Blade	12	4	12FW	Flat Washer
6	8	58N	5/8 Nut	13	6	385507	Lynch Pin
7	1	2001	Main Frame Assembly	14	4	387504	Top Link Pin

PART NUMBERS and DESCRIPTION

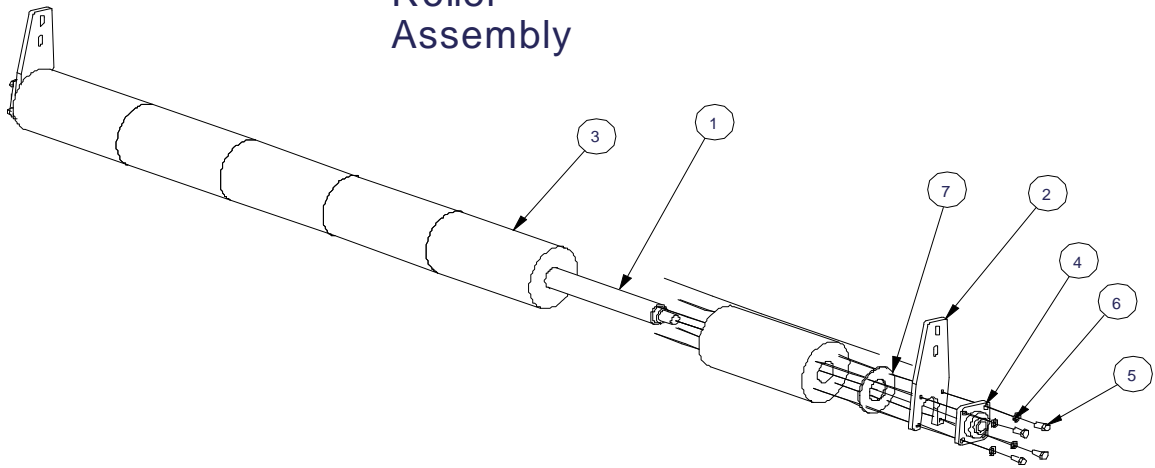
Broom Assembly



Parts List				Parts List			
ITEM	QTY	Reist Part	Discription	ITEM	QTY	Reist Part	Discription
1.1	1	2011	Main Brush Frame	2.7	2	516212	5/16x2-1/2 Bolt
1.2	3	2010	Main Frame Brush	2.8	2	516CLN	5/16 NC Lock Nut
1.3	2	12*3	1/2x3 Bolt	3	2	2017	Spring Anchor
1.4	2	12CLN	1/2 Lock Nut	4	2	2016	Pivot Anchor (without bushing)
1.5	6	516212	5/16x2-1/2 Bolt	5	2	2015	Pivot Arm (with bushing)
1.6	6	516CLN	5/16 NC Lock Nut	6	1	2014	L.H. Brush Holder
1.7	2	10TWI	Brush adjustment Jack	7	2	16148	Spring
2	1	2013	R.H. End Brush Holder	8	8	12CLN	1/2 Lock Nut
2.2	1	2012	End Brush	9	4	GF	1/8 NPT ST Zerk

PART NUMBERS and DESCRIPTION

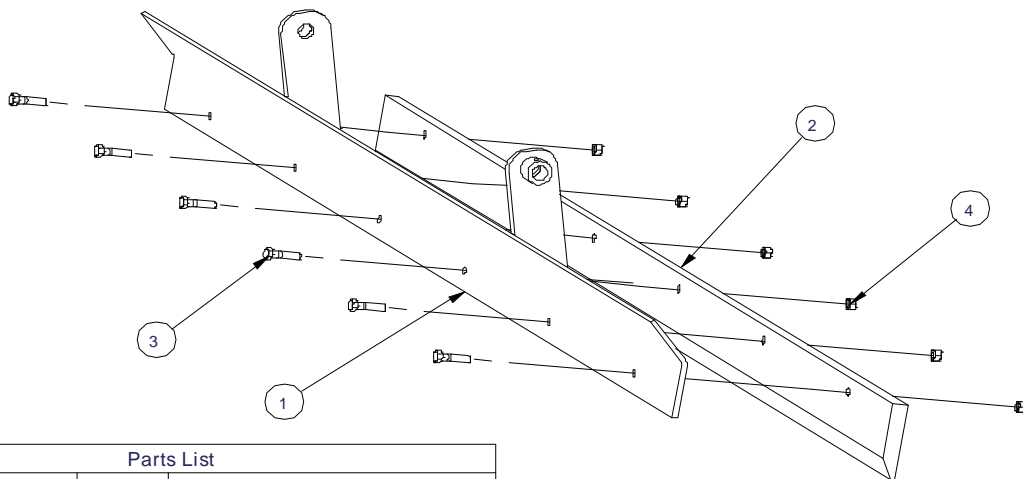
Roller Assembly



Parts List

ITEM	QTY	TITLE	DESCRIPTION
1	1	2007	Roller Axle Shaft
2	2	2008	Roller End Plate
3	6	2009	Roller Section
4	2	F205-UC205100	Bearing
5	8	381	3/8-1 Bolt
6	8	38L	3/8 Lock Washer
7	2	2F	2" Flat Washer

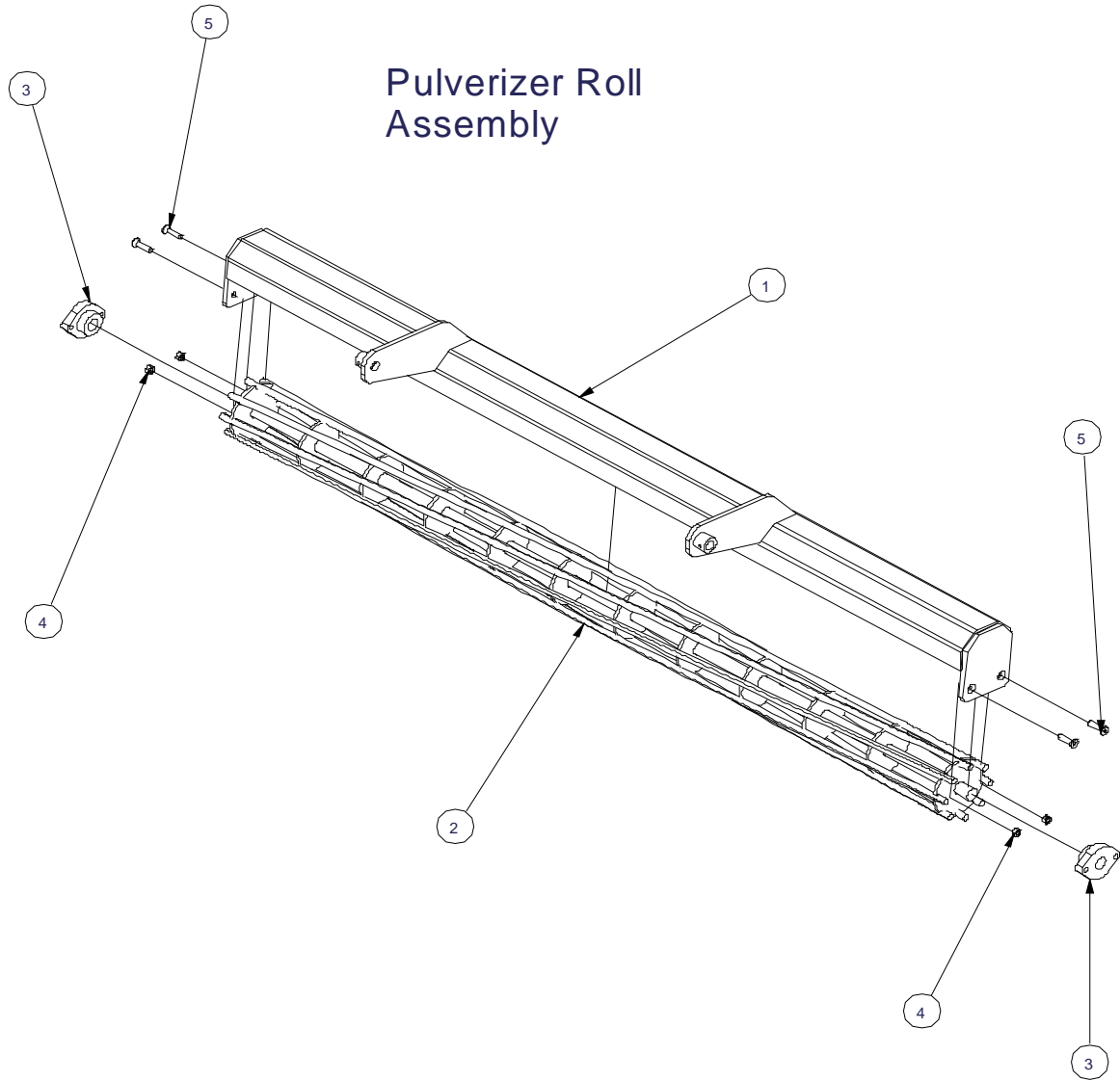
Leveler Assembly



Parts List

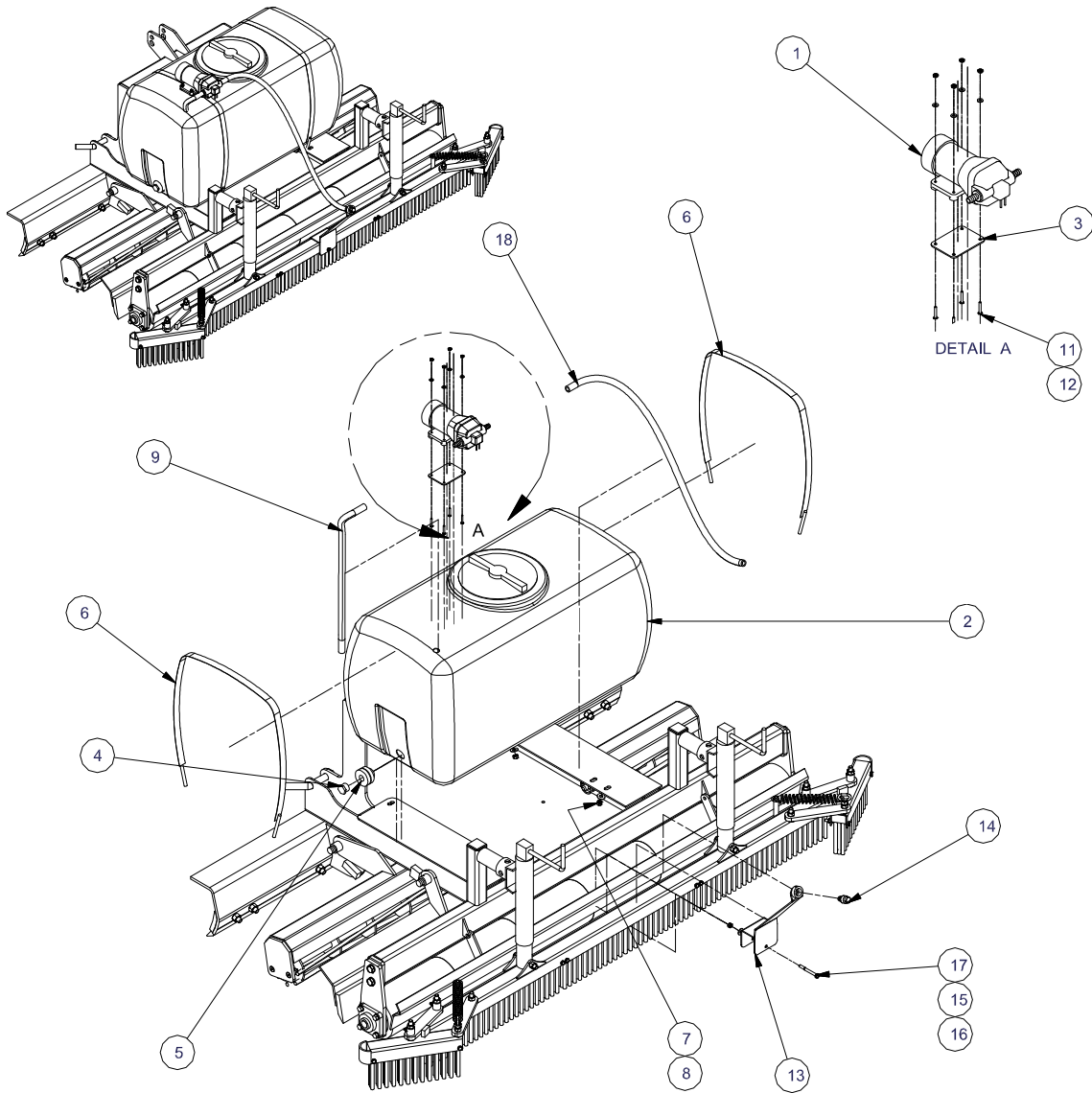
ITEM	QTY	TITLE	DESCRIPTION
1	1	2005	Leveler Bar
2	1	2006	Heat Treated Leveler Bar
3	6	38112	3/8 x 1-1/2 NC Bolt
4	6	38N	3/8 Nut

PART NUMBERS and DESCRIPTION



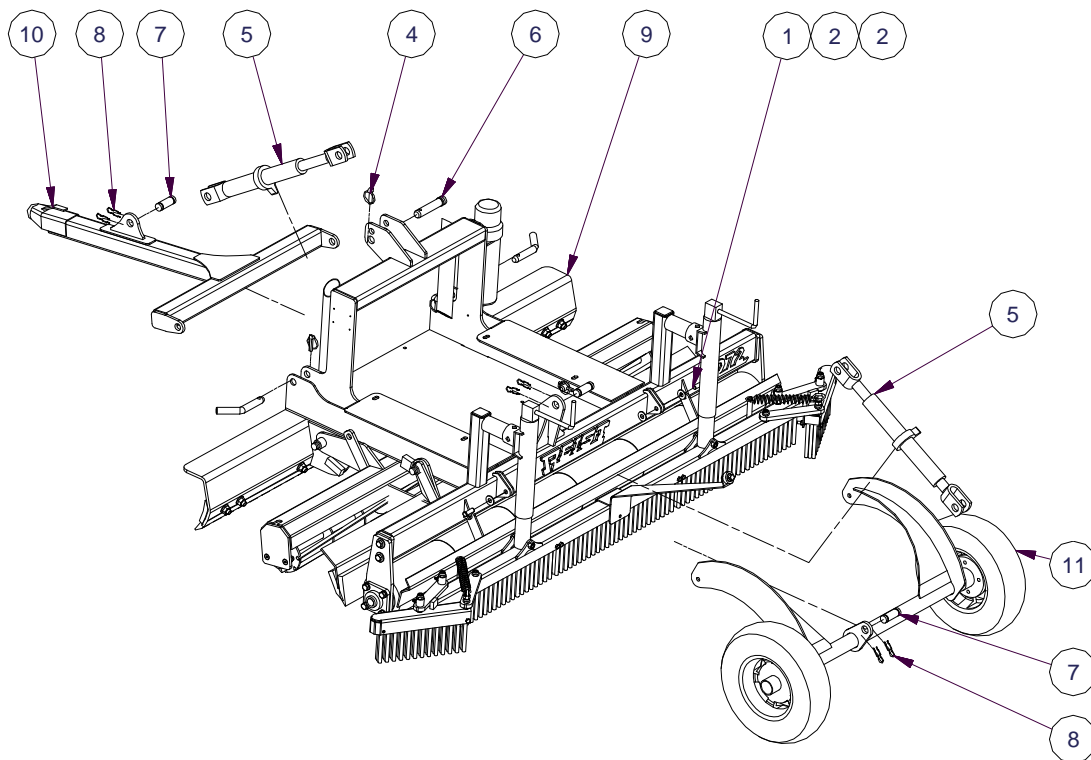
Parts List			
ITEM	QTY	TITLE	DESCRIPTION
1	1	2004	Roller Frame
2	1	2003	Roller
3	2	FD205-AEL205100	2 Bolt Bearing
4	4	38N	3/8 Nut
5	4	38112FH	3/8x1-1/2 Flat Head Bolt

WATER TANK OPTION



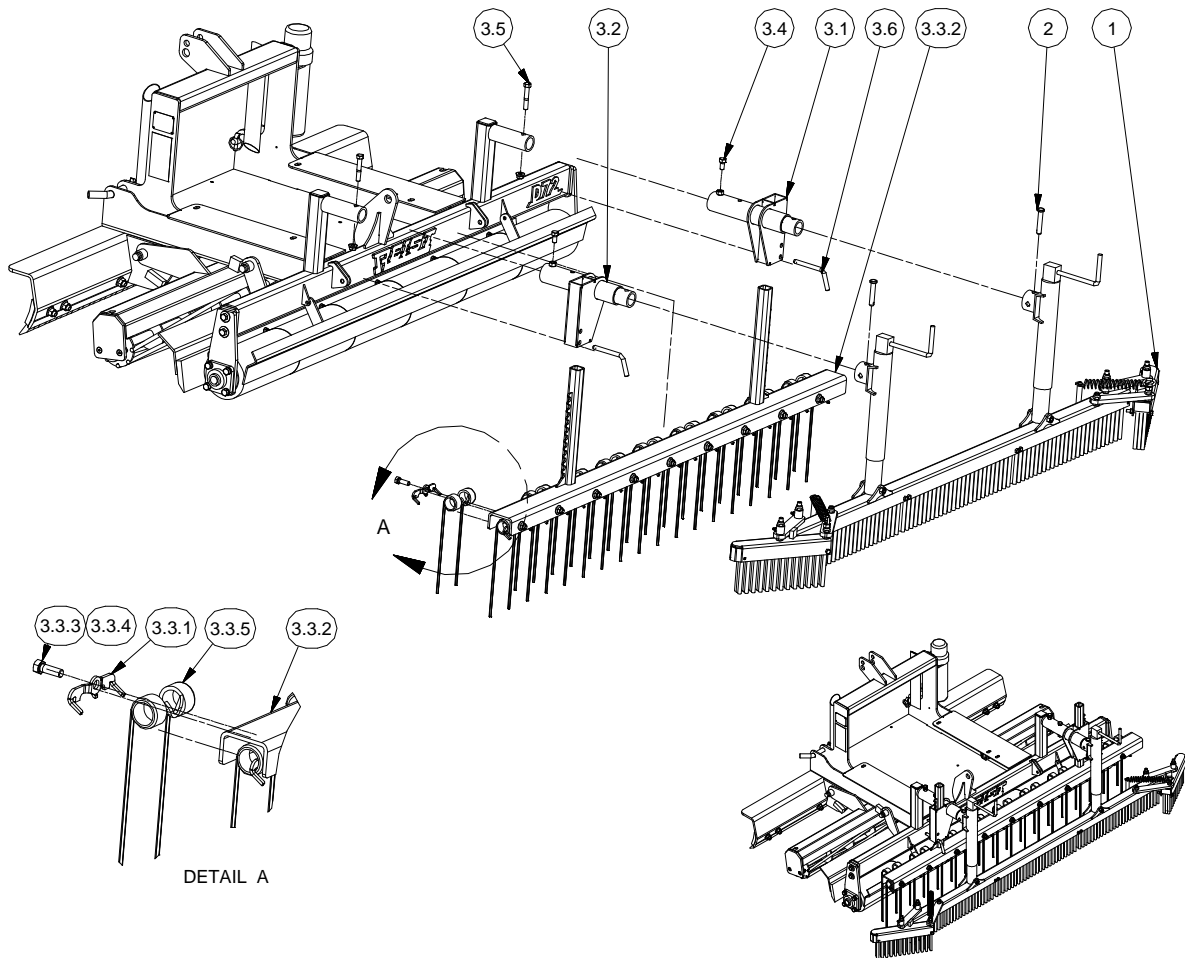
Parts List				Parts List			
ITEM	QTY	PART NUMBER	DESCRIPTION	ITEM	QTY	PART NUMBER	DESCRIPTION
1	1	4300-500A	Flojet Pump 12 volt	10	4	14FW	1/4Washer
2	1	TPC0050	Water Tank 50 gal	11	4	38015	#10x1bolt
3	1	2025	Pump Mounting Plate	12	4	31246	#10 Nut
4	1	34PP	34 Plastic Plug	13	1	2024	Nozzle Mount
5	1	PCF60401	Compression Fitting	14	1	1870FL	Nozzle
6	2	2026	50 gallon Tank Strap	15	1	516F	5/16 Washer
7	4	38N	3/8 Nut	16	1	516N	5/16 Nut
8	4	38F	3/8 Washer	17	1	5163	5/16/3
9	1	PCB12 (26"lg)	Suction Hose	18	1	PCB12 (39"lg)	Pressure Hose

TOW ATTACHMENT OPTION



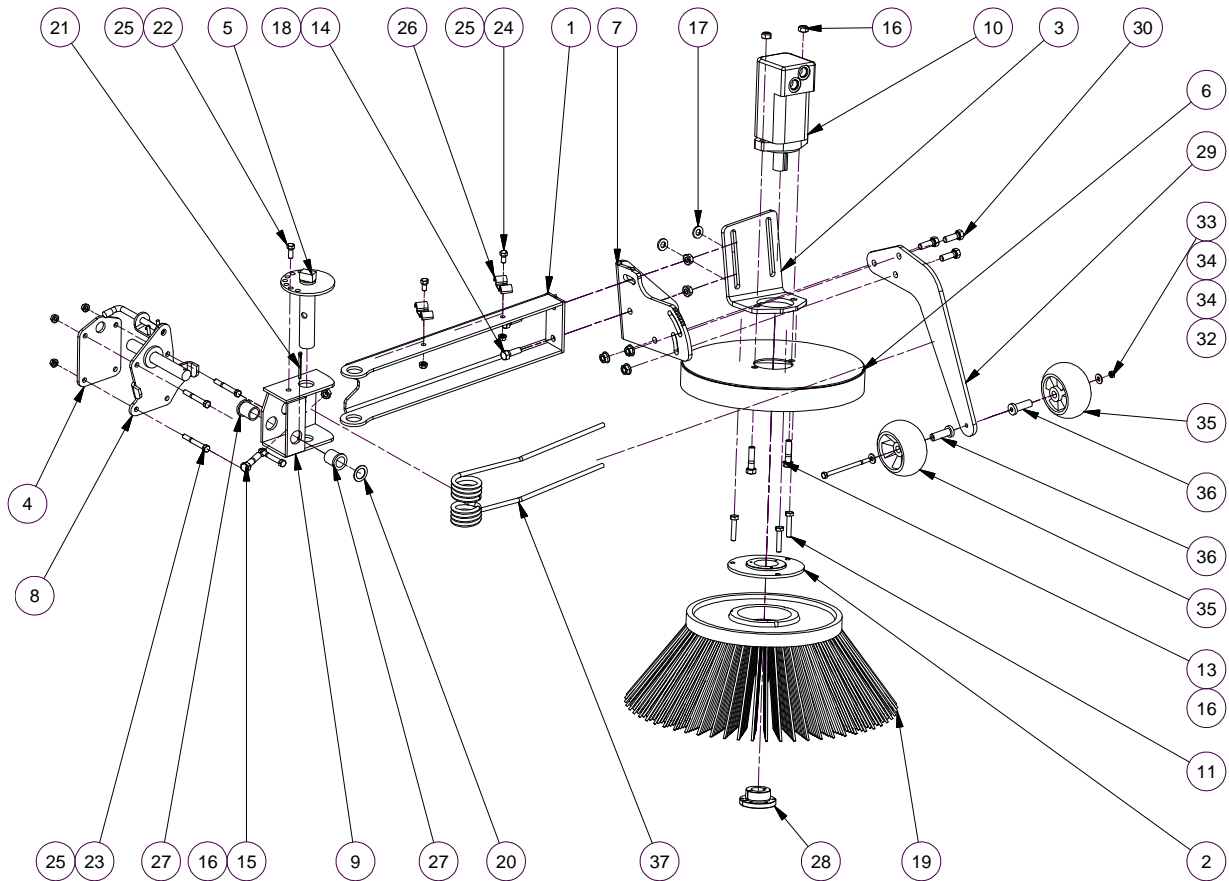
Parts List			
ITEM	QTY	PART NUMBER	DESCRIPTION
1	2	12CP	Clevis pin
2	4	12FW	Plain Washer
3	2	2006	Leveller Cutting Edge
4	1	385507	Lynch Pin
5	2	386501	RATCHET
6	1	387505 Pin	Pin
7	3	637855	Pin
8	6	637856	Hair Pin
9	1	D72	Infielder
10	1	ITA01	Hitch
11	1	ITA02	Wheel Assembly

REAR HARROW TINE OPTION



Parts List				Parts List			
ITEM	QTY	PART NUMBER	DESCRIPTION	ITEM	QTY	PART NUMBER	DESCRIPTION
1	1	2023	Broom Assembly	3.3.3	18	12112	Hex Bolt
2	2	PN916	Jack Pin	3.3.4	18	12FSLN	Flange Nut
3.1	1	100550	Harrow Jack Mount	3.3.5	18	JD311	Tine
3.2	1	100551	Harrow Jack Mount Left	3.4	2	12*1	Hex Bolt
3.3.1	18	MG23	Tine Clip	3.5	2	12*3	Bolt
3.3.2	1	100549	Harrow Weldment	3.6	2	385001	1/2 Hitch Pin

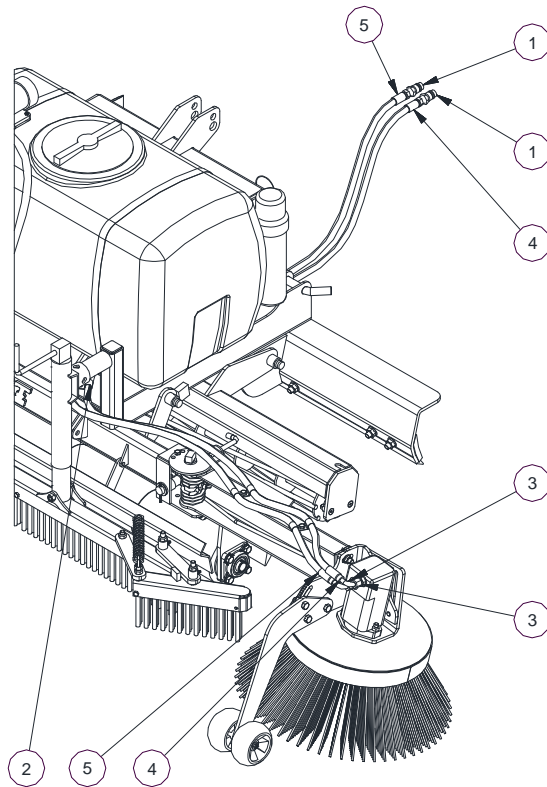
RSB20 POWER SWEEPER OPTION



Parts List				Parts List				Parts List			
ITEM	QTY	PART NUMBER	DESCRIPTION	ITEM	QTY	PART NUMBER	DESCRIPTION	ITEM	QTY	PART NUMBER	DESCRIPTION
1	1	100600	Arm Weldment	13	2	12*2	Hex Bolt	25	7	38FSLN	Flange Nut
2	1	100601	Brush Adaptor	14	2	12112	Hex Bolt	26	2	C-1038	Hose Clip
3	1	100602	Motor Mount Bracket	15	1	12212	Hex Bolt	27	2	MF1-1620-24	Ingus bushing
4	1	100603	Mount Plate	16	3	12CLN	NC Lock Nut	28	1	SDS1-1/4	SDS Type QD Bushing, 1.25" Bore
5	1	100604	Pin Weldment	17	2	12FL	BP Flat Washer	29	1	100609	Gauge Wheel Arm
6	1	100605	Shield	18	2	12FSLN	Flange Nut	30	3	12112	Hex Bolt
7	1	100606	Slotted End Cap	19	1	171104	Brush	31	3	12FSLN	Flange Nut
8	1	100607	Spindle Weldment	20	1	1M	Machinery Washer	32	1	5165	Hex Bolt
9	1	100608	Hinge Weldment	21	1	3162CP	Cotter Pin	33	1	516CLN	NC Lock Nut
10	1	104-1026	Hydraulic Motor	22	1	381	Hex Bolt	34	2	516F	Flat Washer
11	3	1050	Metric Hex Bolt	23	4	383	Hex Bolt	35	2	M111489	Roller
12	2	12*1	Hex Bolt	24	2	3834	Hex Bolt	36	2	M111491	Shoulder Bushing
								37	1	T16-0803	Tine

RSB20 POWER SWEEPER OPTION

Hydraulic hoses



Parts List			
ITEM	QTY	PART NUMBER	DESCRIPTION
1	2	8010-4	1/2 Male Tip
2	1	C-1038	Hose Clip
3	2	5315*8*10	Fitting
4	1	H24506-108-668-118	Hose 1
5	1	H24506-108-668-118	Hose 2

WARRANTY



All new Reist machinery is warranted to be free from defects in material or workmanship, which may cause failure under normal usage and service when used for the purpose, intended, for a period of 12 months. This warranty applies only to a new Reist product, there being no warranty of any nature in respect to new products that have been modified or altered, repaired, neglected, or used in any way, which, in the opinion of Reist adversely affects its performance.

In the event of failure of a part or parts, and upon inspection, Reist is satisfied that failure is due to defective material or workmanship within 12 calendar months, from the date of delivery to an end user, such defective part or parts will be repaired or replaced by Reist at his business location. It is the responsibility of the buyer, at his expense, to transport the machine or equipment to the manufacturer service shop or, to an authorized service depot or, alternatively, to reimburse Reist for any travel or transportation expense involved in fulfilling this warranty.

When requested by Reist, part or parts shall be returned for inspection, transportation prepaid, to a place designated by Reist. **IN NO EVENT SHALL THE BUYER BE ENTITLED TO RECOVER FOR INCIDENTAL OR CONSEQUENTIAL DAMAGES, INCLUDING, BUT NOT LIMITED TO, LOSS OF PRODUCT, INCONVENIENCE, RENTAL OR REPLACEMENT EQUIPMENT, LOSS OF PROFIT, OR OTHER COMMERCIAL LOSS.**

This warranty becomes void and null if the equipment is modified, breaks down as the result of an accident, is not operated according to manufacturers recommendations, damaged by negligence or if maintenance has not been carried out as specified.

THIS WARRANTY IS NOT TRANSFERABLE

Proof of Purchase

Date of purchase (yyyy mm dd)		Model	Serial #	
Dealer purchased from		City	State or Province	Country
First Name	Last Name		Phone # (include area code)	
Address			State or Province	Country
City	Postal Code	Reist Industries Inc. 100 Union St. Elmira Ontario N3B 2Z2		519-669-1501

Proof of Purchase

Date of purchase (yyyy mm dd)		Model	Serial #	
Dealer purchased from		City	State or Province	Country
First Name	Last Name		Phone # (include area code)	
Address			State or Province	Country
City	Postal Code	Reist Industries Inc. 100 Union St. Elmira Ontario N3B 2Z2		519-669-1501

**Reist Industries (Elmira) Ont.
100 Union St., Elmira
Ontario, Canada, N3B 2Z2
www.reistindustries.com**