



MultiGroomer

OPERATOR & PARTS MANUAL
MG48, MG60, MG72, MG80 MG96, MG120

Serial number starting from L2518



TABLE OF CONTENTS



<u>ITEM</u>	<u>PAGE</u>
INTRODUCTION	2
HORSE SAFETY.....	3
SAFETY.....	3 – 4
DAILY CHECK LIST	5
SETUP INSTRUCTIONS	6
OPERATION INSTRUCTIONS	7
OPTIONAL ATTACHMENTS	8 – 11
PARTS --MG60	12-13
PARTS --MG60	14-15
PARTS --MG72	16-17
PARTS --MG80	18-19
PARTS --MG96	20-21
PARTS --MG120	22-25
PIVOT HITCH CAT 1	26
PIVOT HITCH CAT 2	27
BOARD SCRAPER & TOW HITCH	28
FRONT LEVELING BLADE	29
WARRANTY	30

CONGRATULATIONS!

Thank you for choosing the **REIST MultiGroomer**. We feel confident that this equipment will meet your expectations in workmanship, reliability and performance.

This manual is to assist you with the safe operation of the **REIST MultiGroomer**. The MultiGroomer was primarily designed to level and groom indoor and outdoor horse arenas but can also be used for landscaping. The heavy ripper teeth are strong enough to level frozen sand or soil. Our experience has shown us that there are many difference types of sand, soil, or special products for riding arenas and the Reist MultiGroomer is the one to do the job right. The two main options to choose from are either the 2 rows of harrow teeth or a leveling blade with 1 row of harrow teeth. There are some products that the leveling blade will not work in because the material drags and bunches up. For this you need the 2 rows of harrow teeth. For sandy soil the leveling blade is required.

Two hitch options are available. The Drawbar Hitch is so that the MultiGroomer can be use with equipment that isn't equipped with 3PHT. And there is the Pivot Hitch which all the advantages are explained later on in the manual.

GENERAL SAFETY



- **Careful operation is the best assurance against accidents. It is the owner's responsibility to make sure that all operator's read this manual before operating the equipment.**
- **Familiarize yourself with all controls and always be ready to stop equipment quickly in case of emergency.**
- **Never let a child operate machinery.**
- **Protect yourself by wearing ear protection.**

Horse Safety

To prevent injury to a horse

- **Before using the Roto-Groomer check the complete machine including the tractor for broken or missing parts and repair if necessary.**
- **When done grooming, check the groomer again for broken or missing parts.**
- **If there is something missing find it before letting horses use the riding area. Use a metal detector if necessary to find the part.**



CAUTION



OPERATING SAFETY

- **For proper safe operation we recommend that the tractor be equipped with an approved Roll-Over Protective Structure and Safety Belt.**
- **Do not operate an engine in confined or non ventilated area.**
- **Do not perform any adjustments or repairs with engine running.**
- **Always lower 3 PT hitch to ground before performing adjustments or repairs.**
- **Do not operate on excessive incline and always be careful when turning on slopes.**
- **Never carry passengers on implement or tractor.**
- **Stay clear when machine is in operation.**
- **Stop tractor when getting off.**

CAUTION

TRANSPORT SAFETY

- **Use proper safety lights on public roads.**
- **Be alert while driving on road and never carry passengers.**

Check List



- 1. Make sure all bolts are tight (tighten if necessary).**
- 2. Check for worn or broken parts (replace if necessary).**
- 3. Grease bearings every 100 hrs. Do Not Over Grease.**

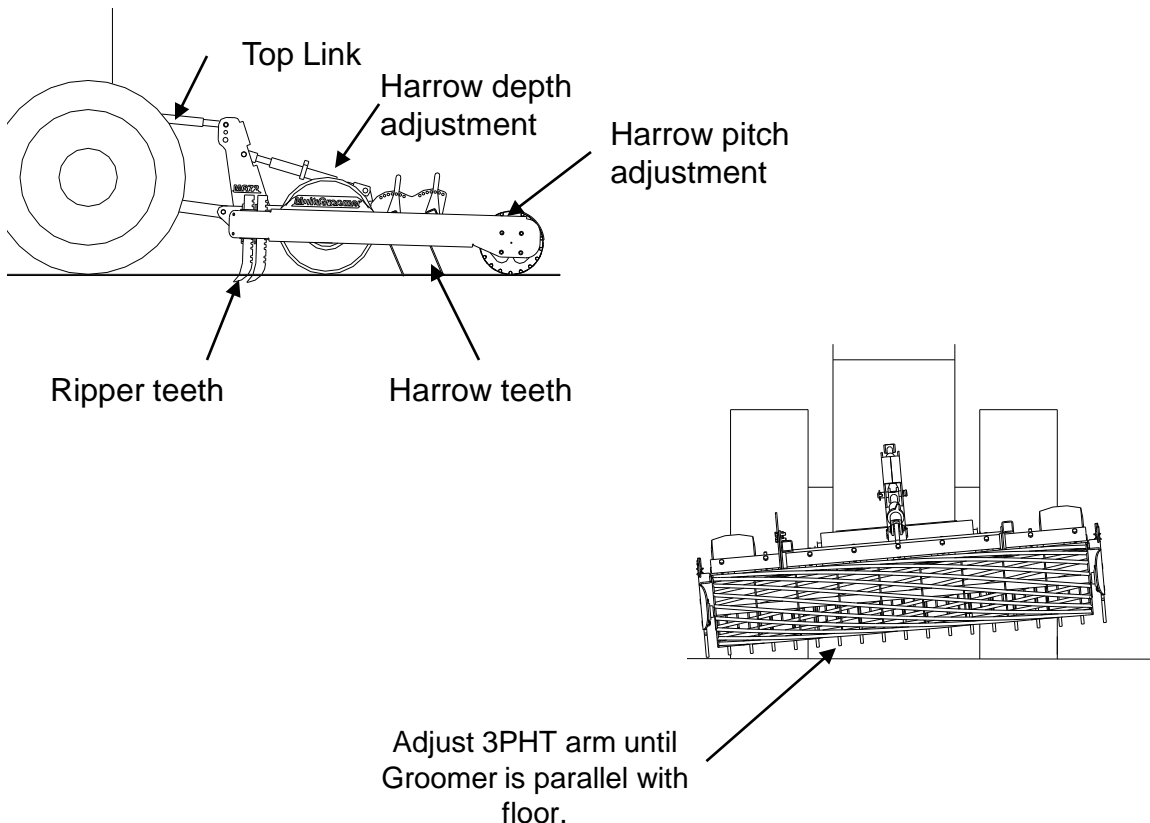
Important Setup Instructions

The Multi Groomer is mounted to the tractor with 3pth. An Optional Drawbar hitch is also available to be towed with tractor or ATV. The MG48, MG60, and MG72 are category 1. The MG96 and MG120 are category 2.

It is **IMPORTANT** that proper adjustments are made to achieve best results.

Setup:

1. Use proper pin & bushing sizes when attaching Multigroomer to tractor.
2. Have the tractor and MultiGroomer on level ground preferably concrete for initial setup.
3. Lower Multigroomer to ground, putting 3 PTH lever to max. down position and adjust top link until front wheels and roller touches the ground.
4. Lift MultiGroomer approx. 1 inch off of ground and adjust 3pth arm so that the Groomer is parallel with the floor. The distance should be the same within a $\frac{1}{4}$ " from side to side.
5. If the MultiGroomer has the Leveling Blade option, lower the MultiGroomer to the ground and adjust the leveling blade so that it touches the ground on each side.

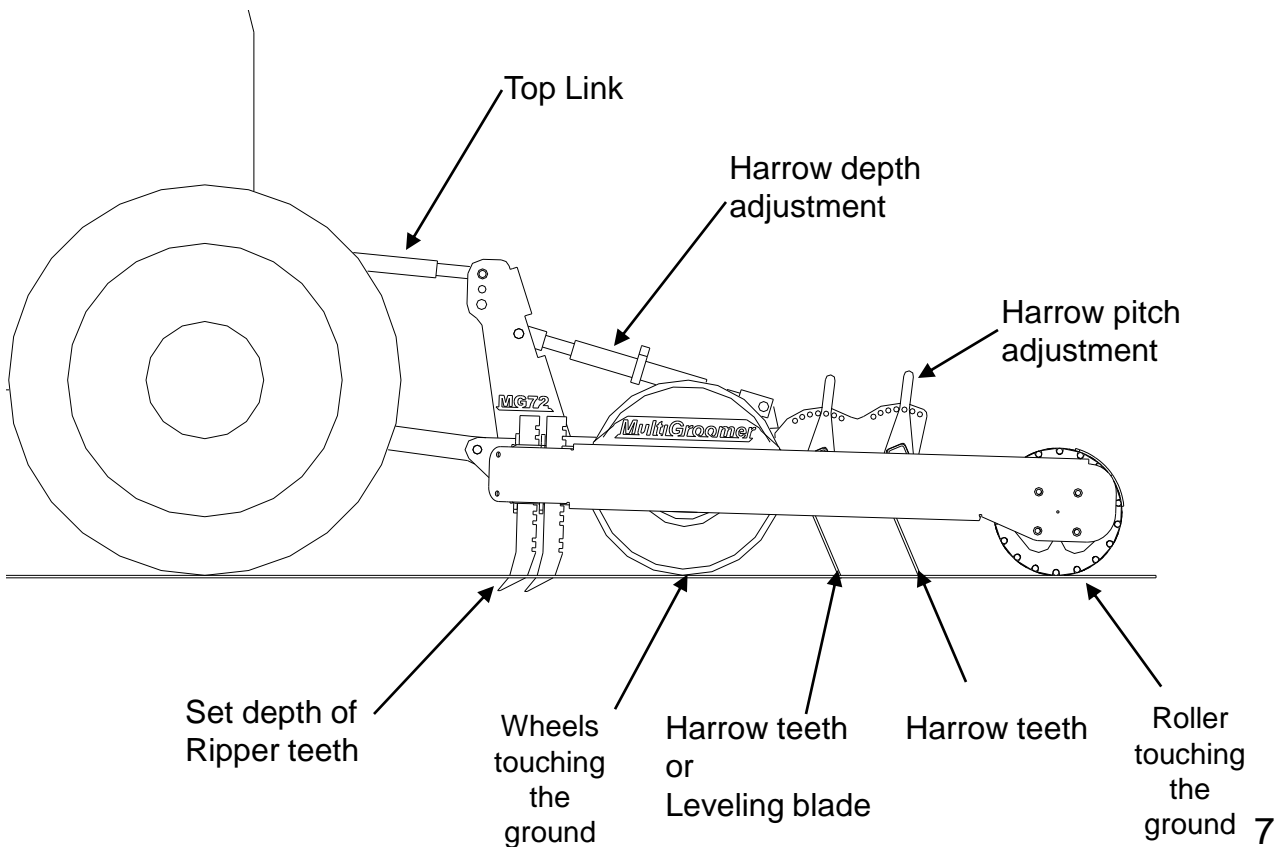


Operation Instructions

The Multi Groomer is mounted to the tractor with 3rd category 1. An Optional Drawbar hitch is also available to be towed with tractor or ATV. It is **IMPORTANT** that proper adjustments are made to achieve best results.

Operation:

1. With 3 PTH lever in max. down position start Grooming at 4 to 8 km per hour.
2. With the leveling blade adjust the depth so that there is always a small amount of sand being dragged along.
3. Using this method of adjustment the MultiGroomer will remove high spots & fill in low spots.
4. For best results use alternative driving patterns as you groom.



Ripper Teeth with replaceable tips

Ripper teeth with replaceable tips are for very abrasive footings and high usage machines. Typically synthetic footings have low abrasion where as sand is high abrasion.

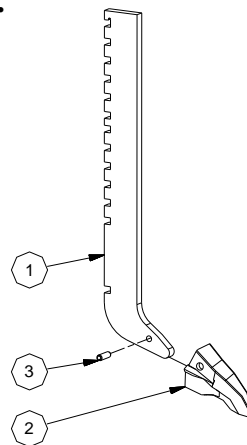
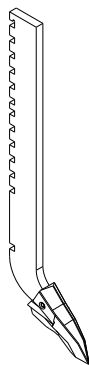
The ripper teeth with the replaceable tip is installed on the Multigroomer same as the regular ripper teeth.

To replace worn tips you will need a hammer and punch to drive out a 5/16" (8mm) roll pin. Follow the steps below.

WARNING

Make sure Multigroomer is blocked securely before working on raised machine.

1. Remove ripper teeth from Multigroomer.
2. Clamp ripper tooth onto a solid table.
3. With hammer and punch, drive out the roll pin.
4. Knock off the worn tip.
5. Clean off any foreign material from tooth.
6. Slide new GEN43 tip onto tooth.
7. With hammer, drive in the 5/16" roll pin.
8. Install ripper teeth back into Multigroomer.

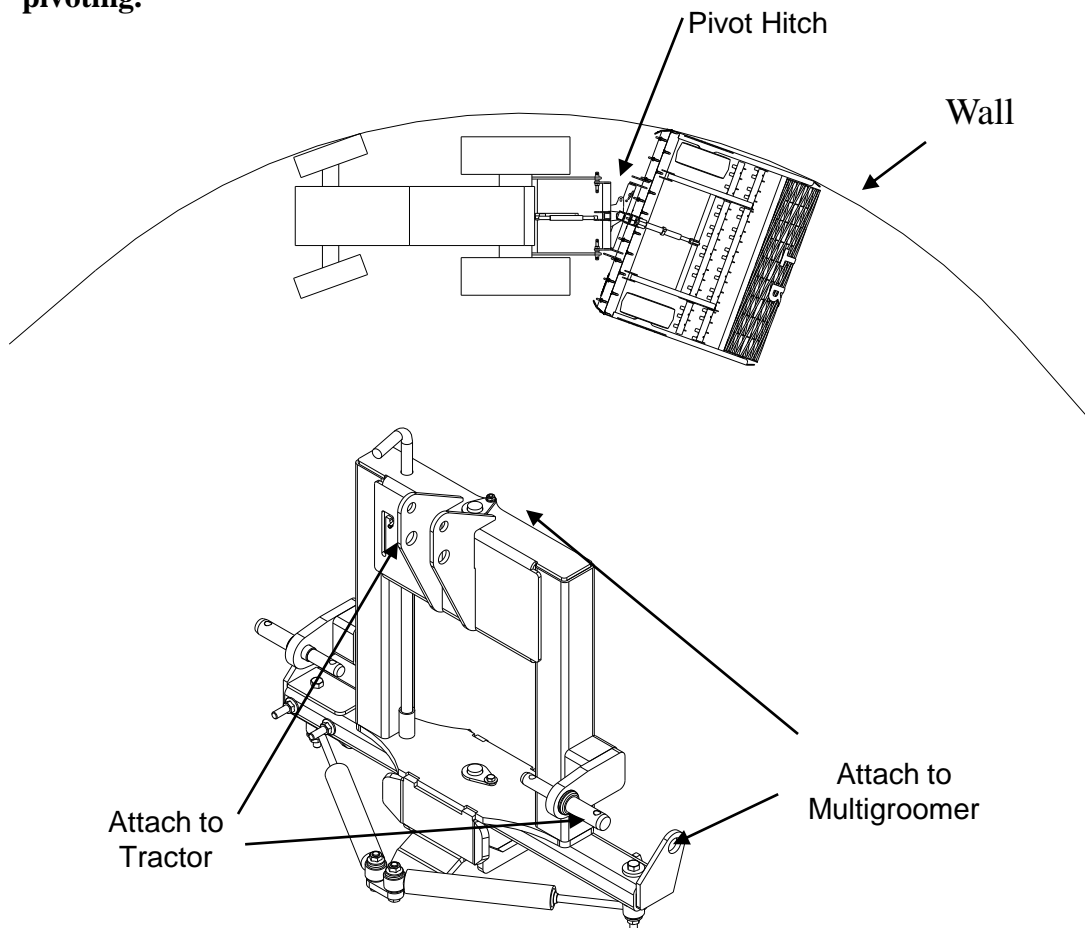


Parts List			
ITEM	QTY	PART NUMBER	DESCRIPTION
1	1	MG012	Ripper Tooth
2	1	GEN43	Replacable Tip
3	1	5161RP	Roll Pin

Advantages of the 3PTH Pivot Attachment

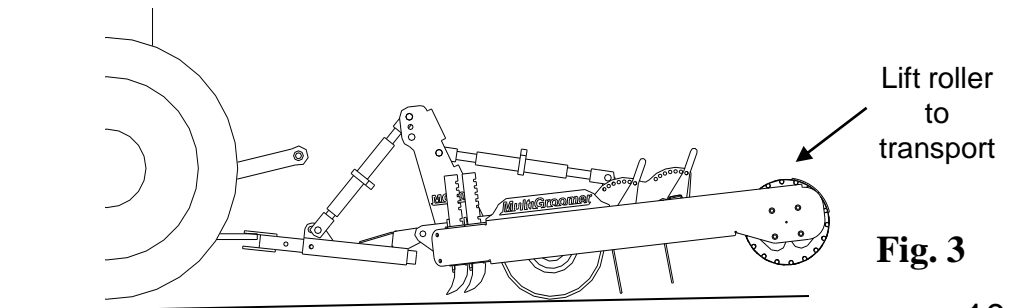
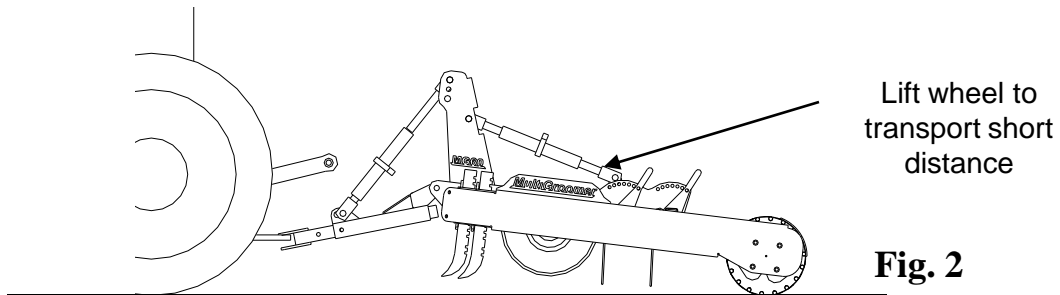
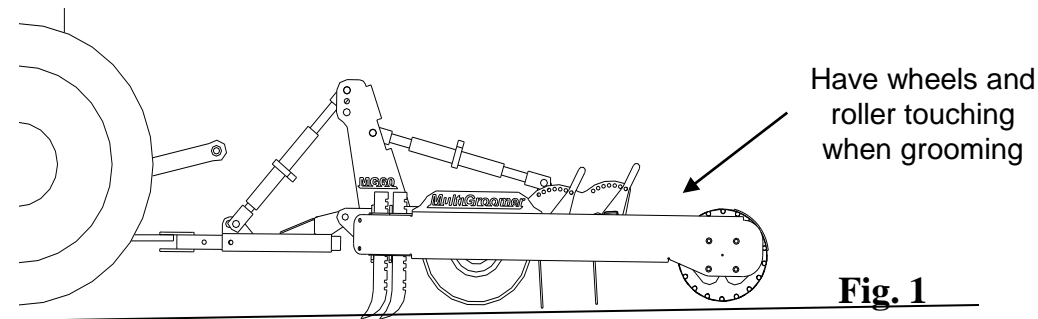
The 3pth Pivot Attachment mounts between the tractor and the MultiGroomer. The advantages with this attachment is:

1. It doesn't torque sideways when turning.
2. Doesn't swing out and hit fence or the wall when turning.
3. Enables you to get into the corners and closer to the fence/wall of your arena or corral.
4. Doesn't push the soil to the side and into the corners when turning.
5. Automatically swings into straight position when Groomer is lifted.
6. When doing heavy ripping with front teeth a pin is easily dropped in to disable pivoting.



Tow Attachment

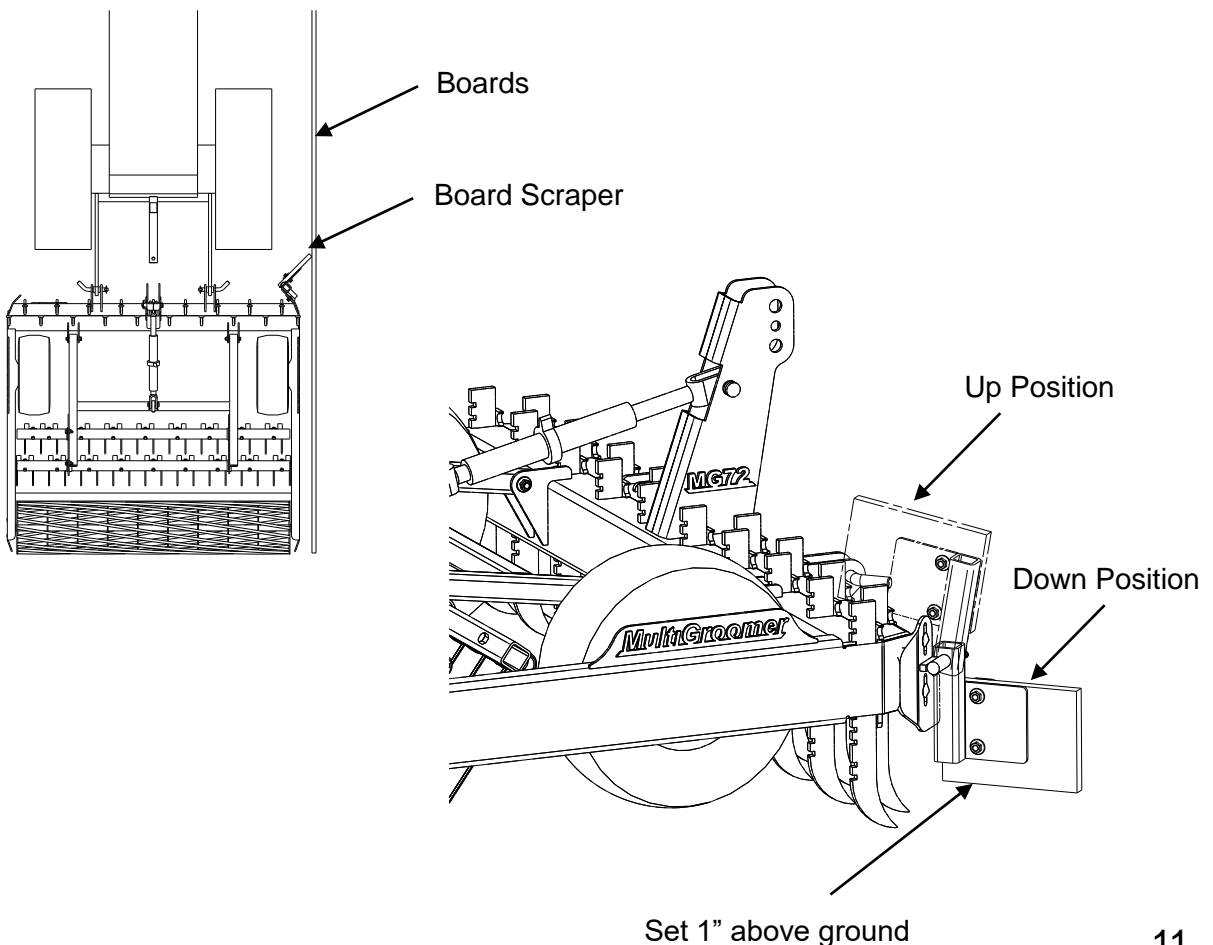
The Tow Attachment is needed if 3PTH is not available, example ATV's, Utility vehicles, or tractors without 3PTH. The tow attachment connects directly to the MultiGroomer. For operation, adjust jack or cylinder so that both the wheels and the roller is touching the ground. See Fig. 1. There are 2 positions to transport with the Tow Attachment. Fig. 2 is to move MultiGroomer short distance such as from arena to storage area. This way you don't have to raise the ripper teeth. Fig. 3 is to transport on wheels. First extent jack or cylinder to position in Fig. 1 and raise the ripper teeth to up position. Then retract jack or cylinder until rear roller is lifted off of the ground.



Board Scraper

Overtime with riding and grooming, the surface material that you have in your riding area whether it's sand, dirt, or whatever surface material you have, it will push to the walls. This can easily be rectified with the MGBS Board Scraper. It is easily installed to the side of the Multigroomer with two ½" carriage bolts. It can easily be swung up and out of the way when not in use. It is made with heavy rubber so that it will not damage the boards.

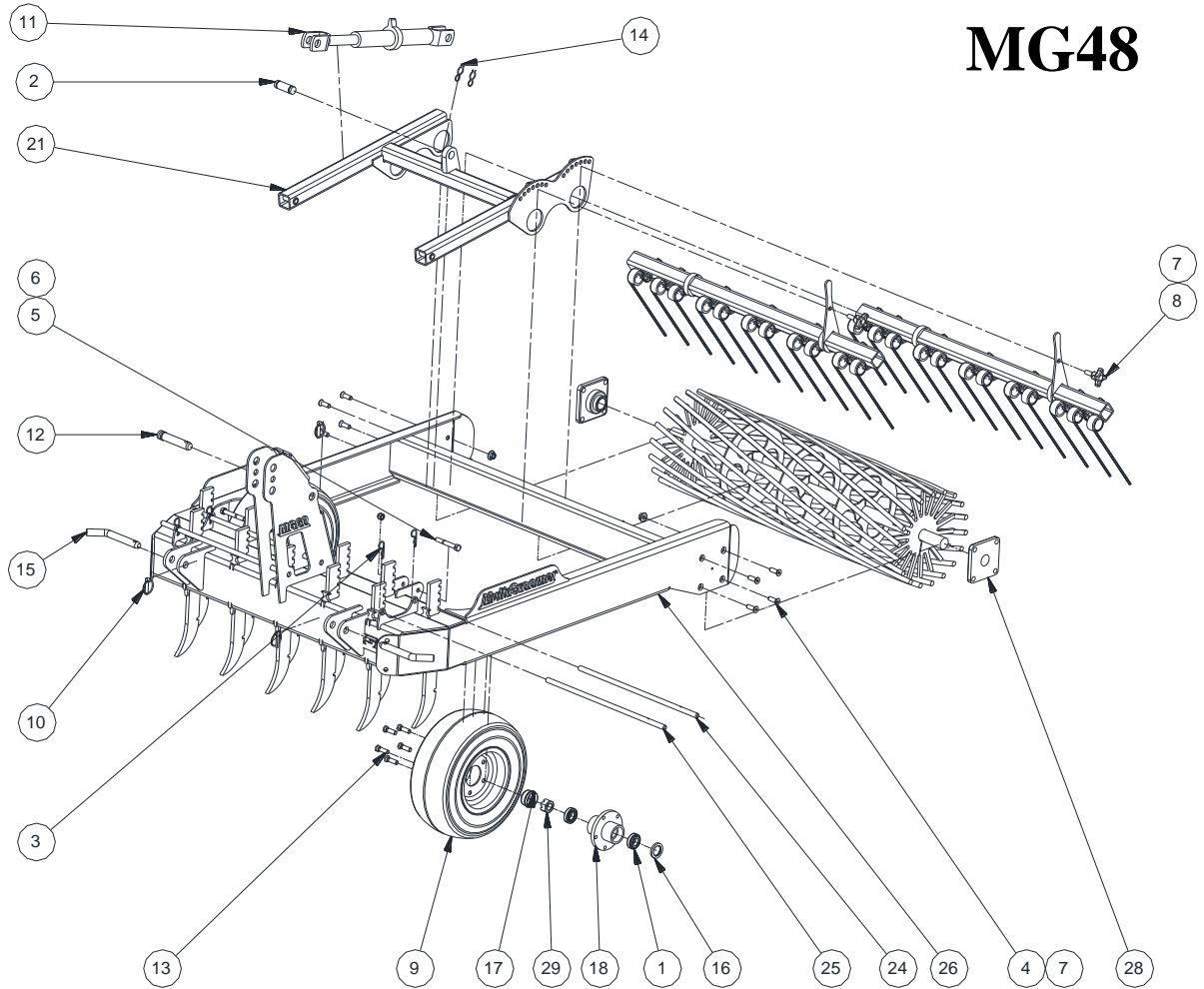
To set up the board scraper set the Multigroomer on the ground with the wheels and roller touching the ground. Then loosen the two bolts so that the board scraper can be moved up and down in the slots. In the down position the scraper should be 1" off the ground. Then tighten the bolts.



MutliGroomer Parts List



MG48

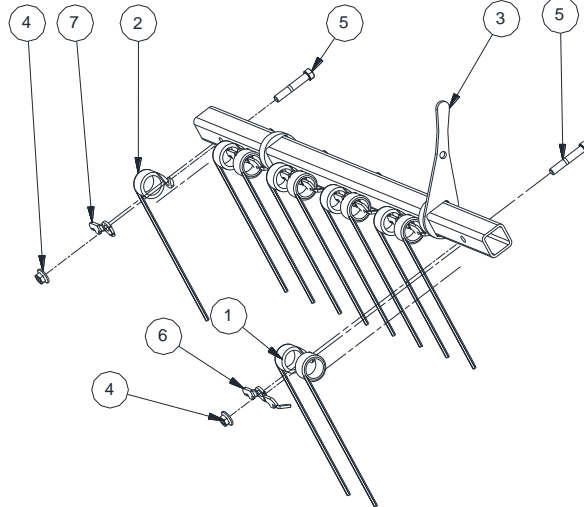


Parts List				Parts List			
ITEM	QTY	PART NUMBER	DESCRIPTION	ITEM	QTY	PART NUMBER	DESCRIPTION
1	4	L44643 \ L44610	Tapered Roller Bearing	16	2	CR523696	Seal
2	1	100x200	Pin	17	2	D-1000	Dust Cap
3	4	109-00060-0062	COTTERS, HAIRPIN	18	2	H010005450	Hub
4	8	12112FH	Flat Head Bolt	19	11	MG011	Ripper Tooth
5	2	12312	Hex Bolt	20	11	MG02	Tooth Lock
6	2	12CLN	Lock Nut	21	1	MG0360	Harrow Frame
7	10	12FSLN	Flange Nut	22	1	MG0448	Harrow Bar Assembly Front
8	2	135-052	Knob	23	1	MG0548	Rear Harrow Assembly
9	2	2020998	Wheel 16.5x6.5-8	24	2	MG5648	Lock Shaft Rear
10	3	385507	7/16 Lynch Pin	25	2	MG5748	Lock Shaft Front
11	1	386501	Ratched Jack	26	1	MG70048	Main Frame
12	1	387505	Pin	27	1	MGR48	Roller (Inches Wide)
13	10	500-20	Wheel bolt/Bolt	28	2	SAF208-24G	Bearing
14	2	637856	Hair Pin	29	2	SJ-114	Slotted Hex Nut
15	2	CAT1-784	Cat 1 Arm Pin				

MutliGroomer Parts List

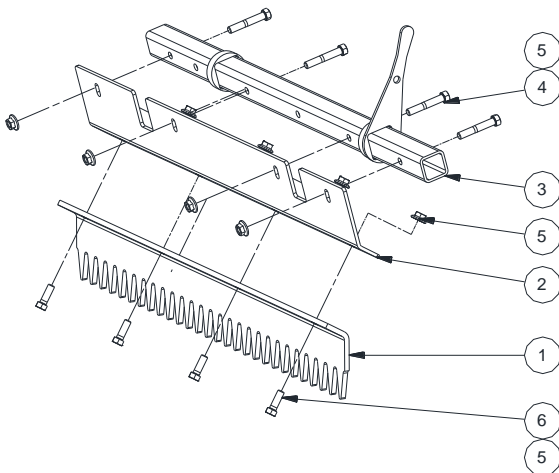


MG48



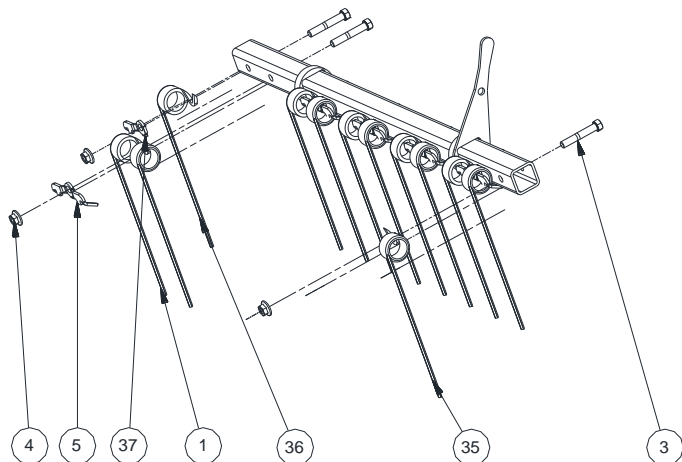
Parts List			
ITEM	QTY	PART NUMBER	DESCRIPTION
1	5	JD311	Tine
2	1	JD311L	Left Half Tine
3	1	MG0648	Bar Weldment Front
4	6	12FSLN	Flange Nut
5	6	12*3	Bolt
6	5	MG23	Tine Clip
7	1	MG25	Tine Clip R

MG0448



Parts List			
ITEM	QTY	PART NUMBER	DESCRIPTION
1	1	MG0948	Leveling Blade
2	1	MG1048	Leveling Blade Base Plate
3	1	MG0648	Bar Weldment Front
4	4	12*3	Bolt
5	8	12FSLN	Flange Nut
6	4	12112	Hex Bolt

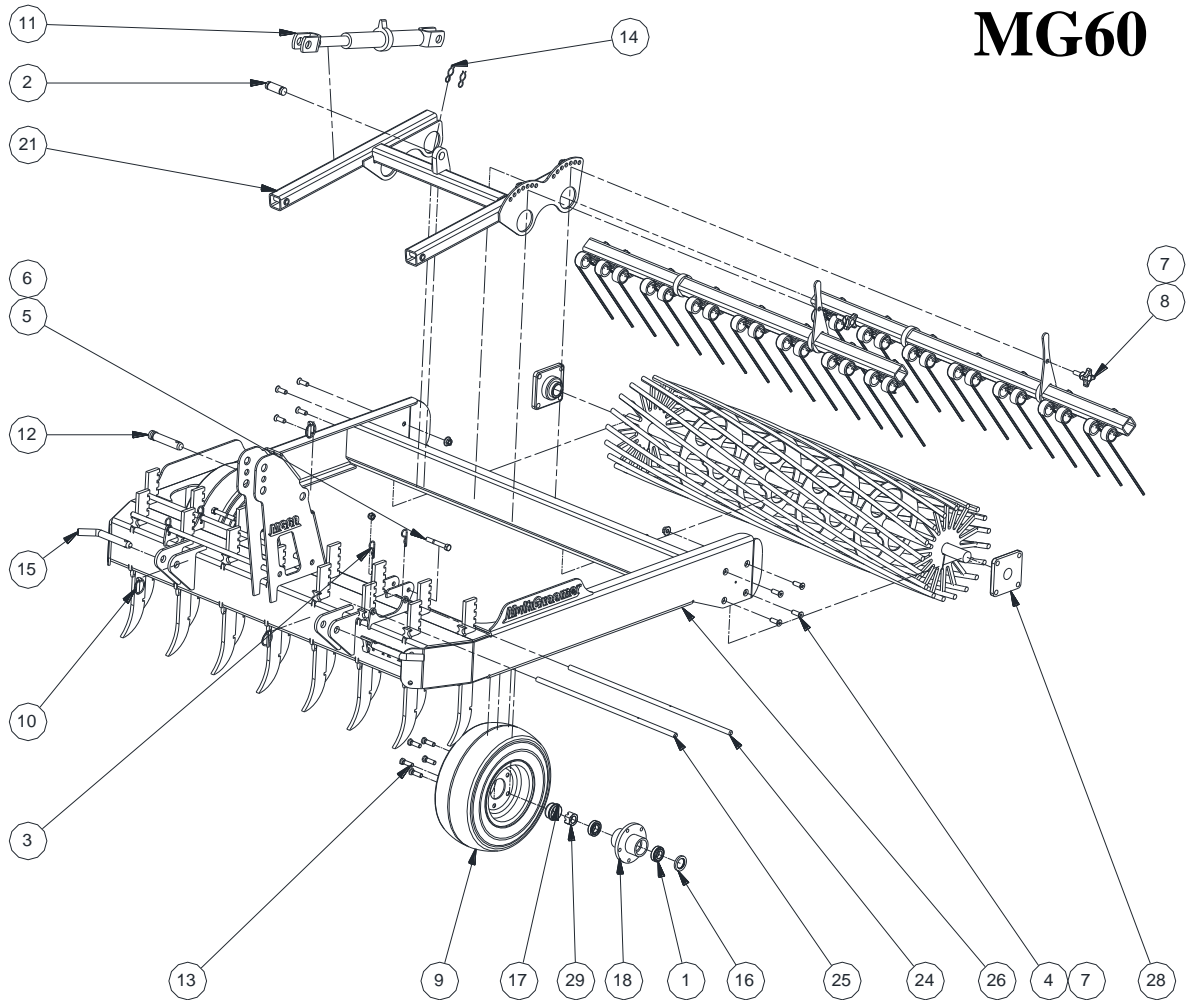
Parts List			
ITEM	QTY	PART NUMBER	DESCRIPTION
1	5	JD311	Tine
2	1	MG0748	Bar Weldment Rear
3	7	12*3	Bolt
4	7	12FSLN	Flange Nut
5	5	MG23	Tine Clip
35	1	JD311R	Right Half Tine
36	1	JD311L	Left Half Tine
37	1	MG25	Tine Clip R



MutliGroomer Parts List



MG60



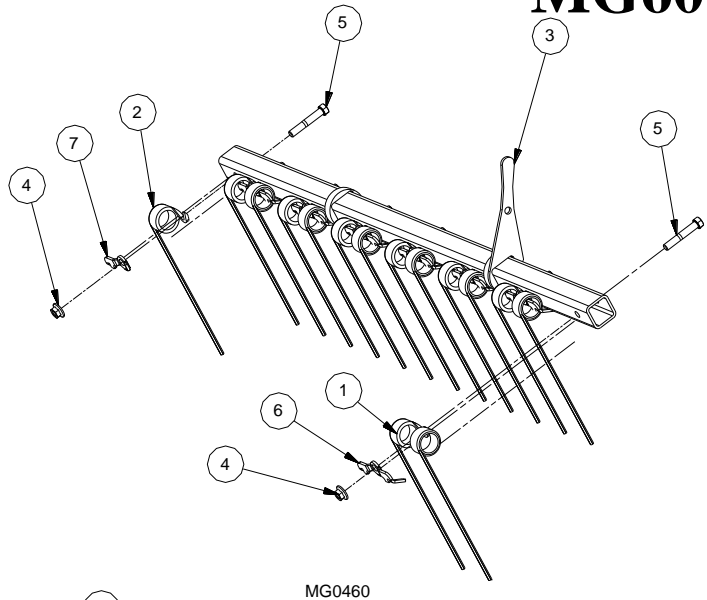
Parts List				Parts List			
ITEM	QTY	PART NUMBER	DESCRIPTION	ITEM	QTY	PART NUMBER	DESCRIPTION
1	4	L44643 \ L44610	Tapered Roller Bearing	16	2	CR523696	Seal
2	1	100x200	Pin	17	2	D-1000	Dust Cap
3	4	109-00060-0062	COTTERS, HAIRPIN	18	2	H010005450	Hub
4	8	12112FH	Flat Head Bolt	19	15	MG011	Ripper Tooth
5	2	12312	Hex Bolt	20	15	MG02	Tooth Lock
6	2	12CLN	Lock Nut	21	1	MG0360	Harrow Frame
7	10	12FSLN	Flange Nut	22	1	MG0460	Harrow Bar Assembly Front
8	2	135-052	Knob	23	1	MG0560	Rear Harrow Assembly
9	2	2020998	Wheel 16.5x6.5-8	24	2	MG5660	Lock Shaft Rear
10	3	385507	7/16 Lynch Pin	25	2	MG5760	Lock Shaft Front
11	1	386501	Ratched Jack	26	1	MG70060	Main Frame
12	1	387505	Pin	27	1	MGR60	Roller (Inches Wide)
13	10	500-20	Wheel bolt/Bolt	28	2	SAF208-24G	Bearing
14	2	637856	Hair Pin	29	2	SJ-114	Slotted Hex Nut
15	2	CAT1-784	Cat 1 Arm Pin				

MutliGroomer Parts List

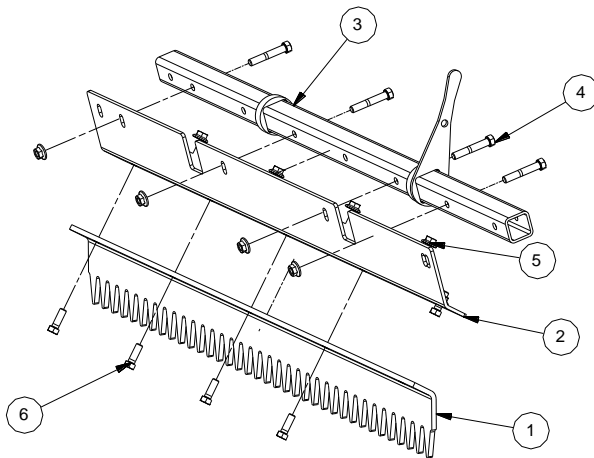


MG60

Parts List			
ITEM	QTY	PART NUMBER	DESCRIPTION
1	7	JD311	Tine
2	1	JD311L	Left Half Tine
3	1	MG0660	Bar Weldment Front
4	8	12FSLN	Flange Nut
5	8	12*3	Bolt
6	7	MG23	Tine Clip
7	1	MG25	Tine Clip R

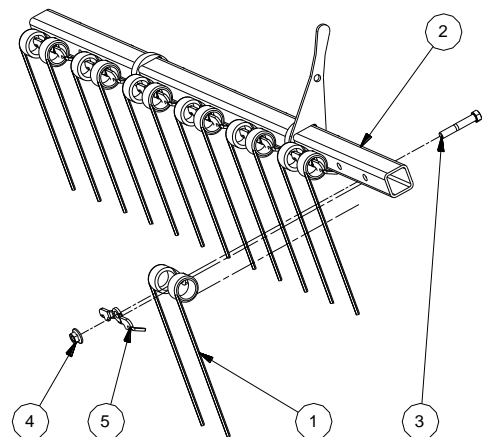


MG0460



Parts List			
ITEM	QTY	PART NUMBER	DESCRIPTION
1	1	MG0960	Leveling Blade
2	1	MG1060	Leveling Blade Base Plate
3	1	MG0660	Bar Weldment Front
4	4	12*3	Bolt
5	9	12FSLN	Flange Nut
6	5	12112	Bolt

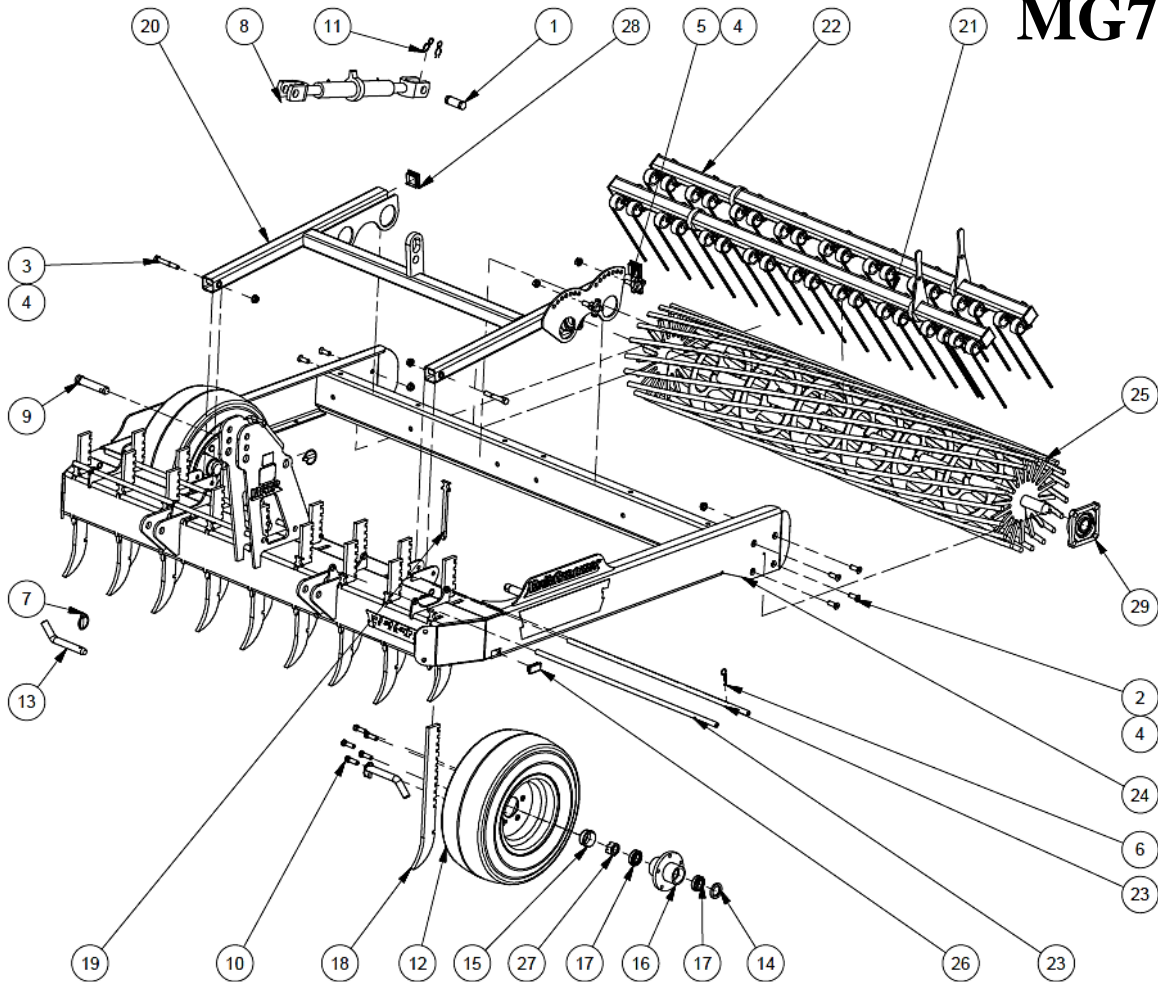
Parts List			
ITEM	QTY	PART NUMBER	DESCRIPTION
1	7	JD311	Tine
2	1	MG0760	Bar Weldment Rear
3	7	12*3	Bolt
4	7	12FSLN	Flange Nut
5	7	MG23	Tine Clip



MutliGroomer Parts List



MG72



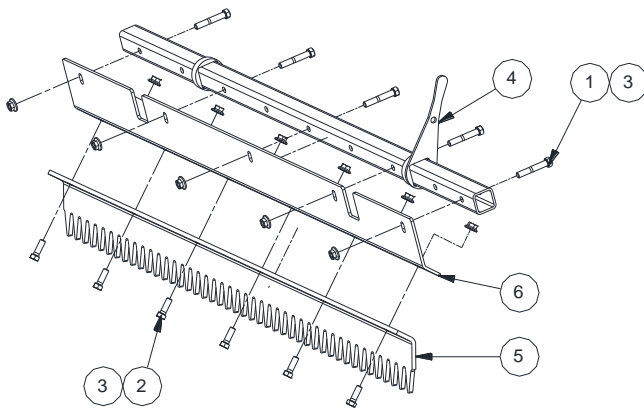
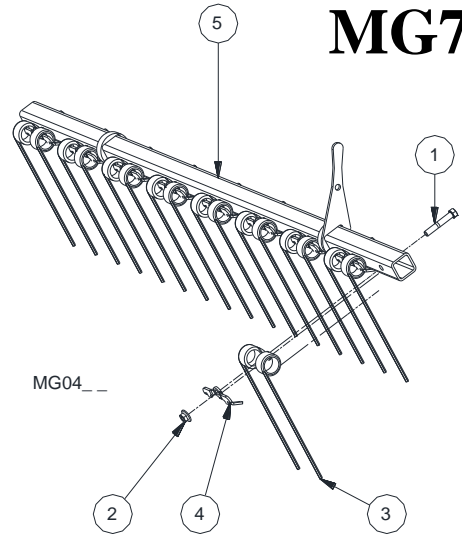
Parts List				Parts List			
ITEM	QTY	PART NUMBER	DESCRIPTION	ITEM	QTY	PART NUMBER	DESCRIPTION
1	1	100x200	Pin	16	2	H010005450	Hub
2	8	12112FH	Flat Head Bolt	17	4	L44643 L44610	Tapered Roller Bearing
3	2	12312	Hex Bolt	18	17	MG011	Ripper Tooth
4	12	12FSLN	Flange Nut	19	17	MG02	Tooth Lock
5	2	135-052	Knob	20	1	MG0372	Harrow Frame
6	4	383503	COTTERS, HAIRPIN	21	1	MG0472	Harrow Bar Assembly Front
7	3	385507	7/16 Lynch Pin	22	1	MG0572	Harrow Bar Assembly Rear
8	1	386501	Ratched Jack	23	4	MG5772	Lock Shaft
9	1	387505	Pin	24	1	MG70072	MultiGroomer Frame
10	10	500-20	Wheel bolt Bolt	25	1	MGR72	Rolling Harrow Reel
11	2	637856	Hair Pin	26	2	RC1020-1	Cap
12	2	8074684	Wheel 20.5x8.0-10	27	2	SJ-114	Slotted Hex Nut
13	2	CAT1-784	Cat 1 Arm Pin	28	2	T-64-U4	Cap 3-16x2x2
14	2	CR523696	Seal	29	2	UCF208-108	4 Bolt Flange Bearing
15	2	D1000	Dust Cap				

MutliGroomer Parts List



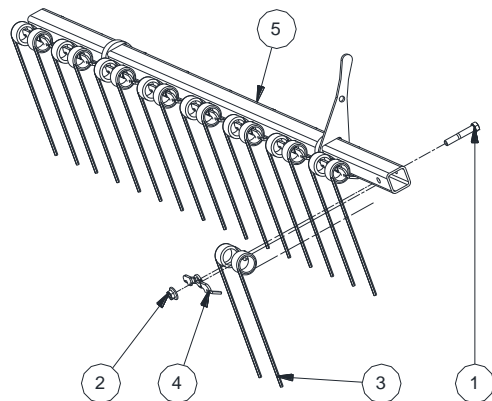
MG72

Parts List			
ITEM	QTY	PART NUMBER	DESCRIPTION
1	9	12*3	Bolt
2	9	12FSLN	Flange Nut
3	9	JD311	Tine
4	9	MG23	Tine Clip
5	1	MG06_ _	Bar Weldment Front



Parts List			
ITEM	QTY	PART NUMBER	DESCRIPTION
1	5	12*3	Bolt
2	6	12112	Hex Bolt
3	11	12FSLN	Flange Nut
4	1	MG06_ _	Bar Weldment Front
5	1	MG09_ _	Grader Blade
6	1	MG10_ _	Leveling Blade Base Plate

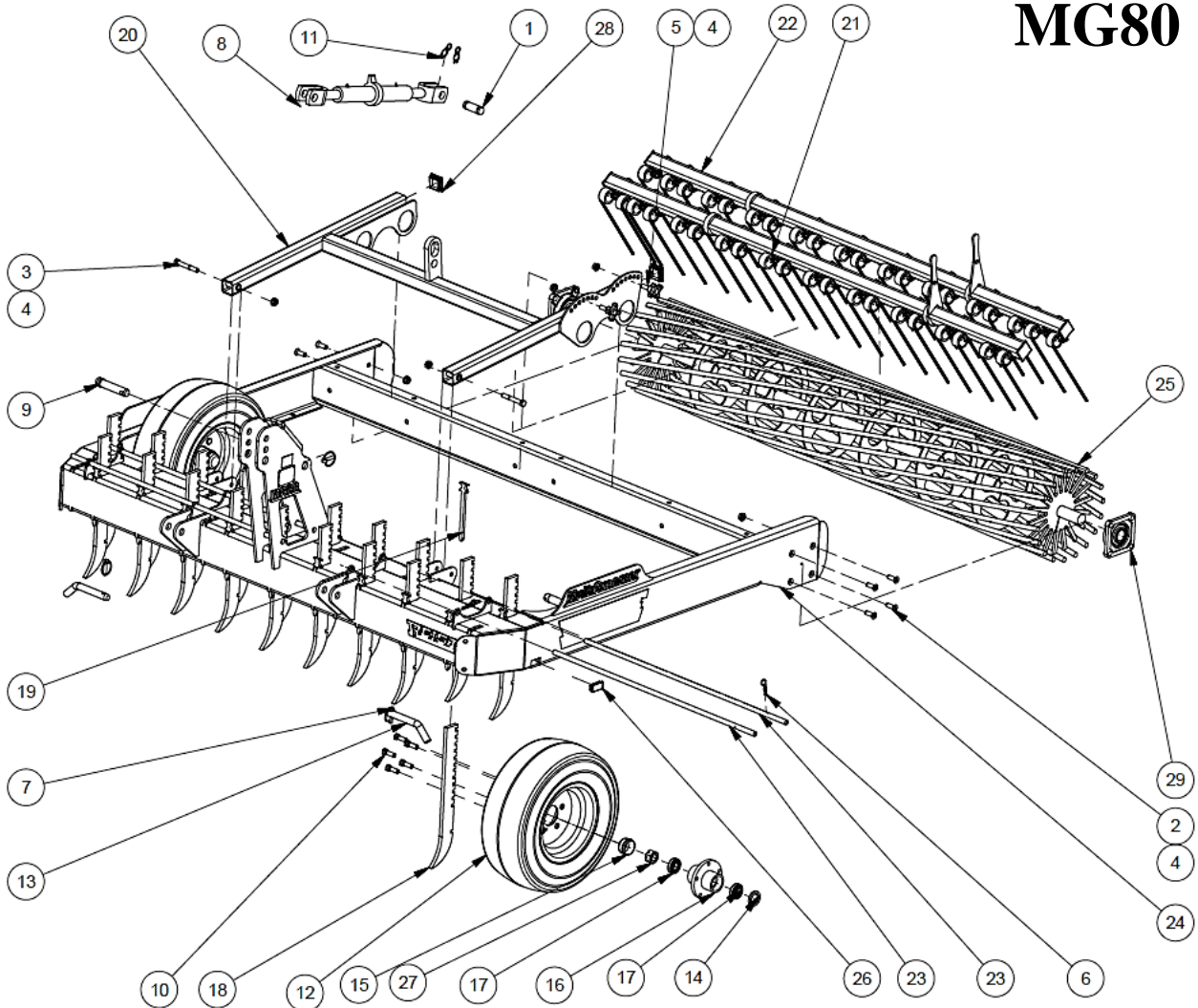
Parts List			
ITEM	QTY	PART NUMBER	DESCRIPTION
1	9	12*3	Bolt
2	9	12FSLN	Flange Nut
3	9	JD311	Tine
4	9	MG23	Tine Clip
5	1	MG07_ _	Rear Bar Weldment



MutliGroomer Parts List



MG80



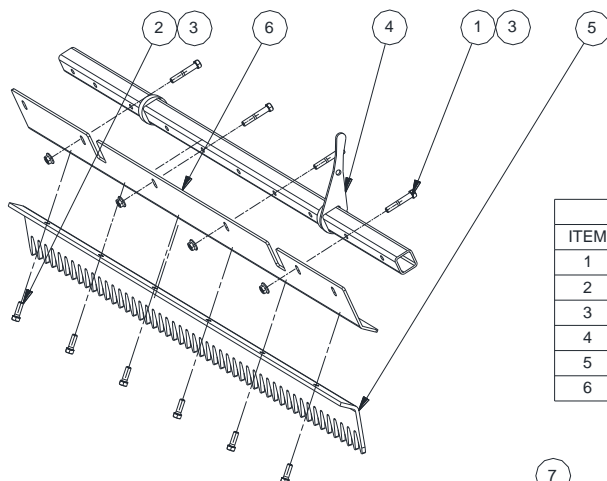
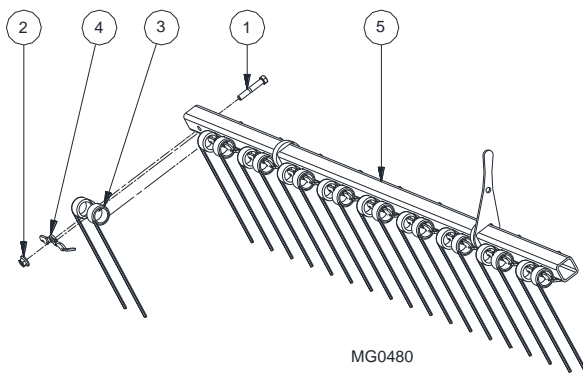
Parts List				Parts List			
ITEM	QTY	PART NUMBER	DESCRIPTION	ITEM	QTY	PART NUMBER	DESCRIPTION
1	1	100x200	Pin	16	2	H010005450	Hub
2	8	12112FH	Flat Head Bolt	17	4	L44643 L44610	Tapered Roller Bearing
3	2	12312	Hex Bolt	18	19	MG011	Ripper Tooth
4	12	12FSLN	Flange Nut	19	19	MG02	Tooth Lock
5	2	135-052	Knob	20	1	MG0372	Harrow Frame
6	4	383503	COTTERS, HAIRPIN	21	1	MG0480	Harrow Bar Assembly Front
7	3	385507	7/16 Lynch Pin	22	1	MG0580	Harrow Bar Assembly Rear
8	1	386501	Ratched Jack	23	4	MG5680	Lock Shaft B 80
9	1	387505	Pin	24	1	MG70080	MultiGroomer Frame
10	10	500-20	Wheel bolt Bolt	25	1	MGR80	Rolling Harrow Reel
11	2	637856	Hair Pin	26	2	RC1020-1	Cap
12	2	8074684	Wheel 20.5x8.0-10	27	2	SJ-114	Slotted Hex Nut
13	2	CAT1-784	Cat 1 Arm Pin	28	2	T-64-U4	Cap 3-16x2x2
14	2	CR523696	Seal	29	2	UCF208-108	4 Bolt Flange Bearing
15	2	D1000	Dust Cap				

MutliGroomer Parts List



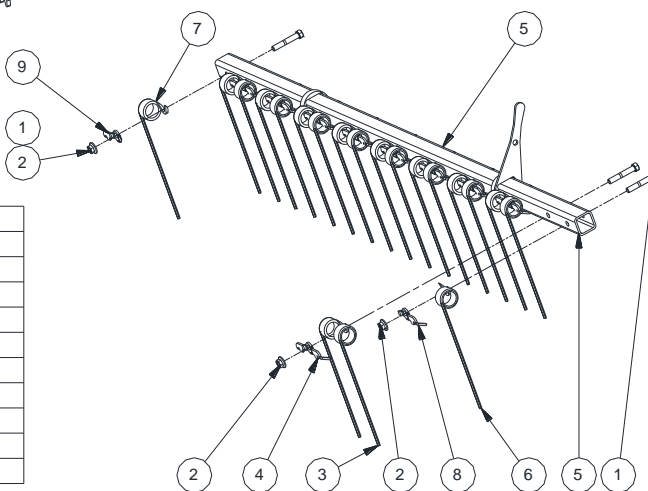
MG80

Parts List			
ITEM	QTY	PART NUMBER	DESCRIPTION
1	10	12*3	Bolt
2	10	12FSLN	Flange Nut
3	10	JD311	Tine
4	10	MG23	Tine Clip
5	1	MG0680	Bar Weldment Front



Parts List			
ITEM	QTY	PART NUMBER	DESCRIPTION
1	4	12*3	Bolt
2	6	12112	Hex Bolt
3	10	12FSLN	Flange Nut
4	1	MG0680	Bar Weldment Front
5	1	MG0980	Grader Blade
6	1	MG1080	Leveling Blade Base Plate

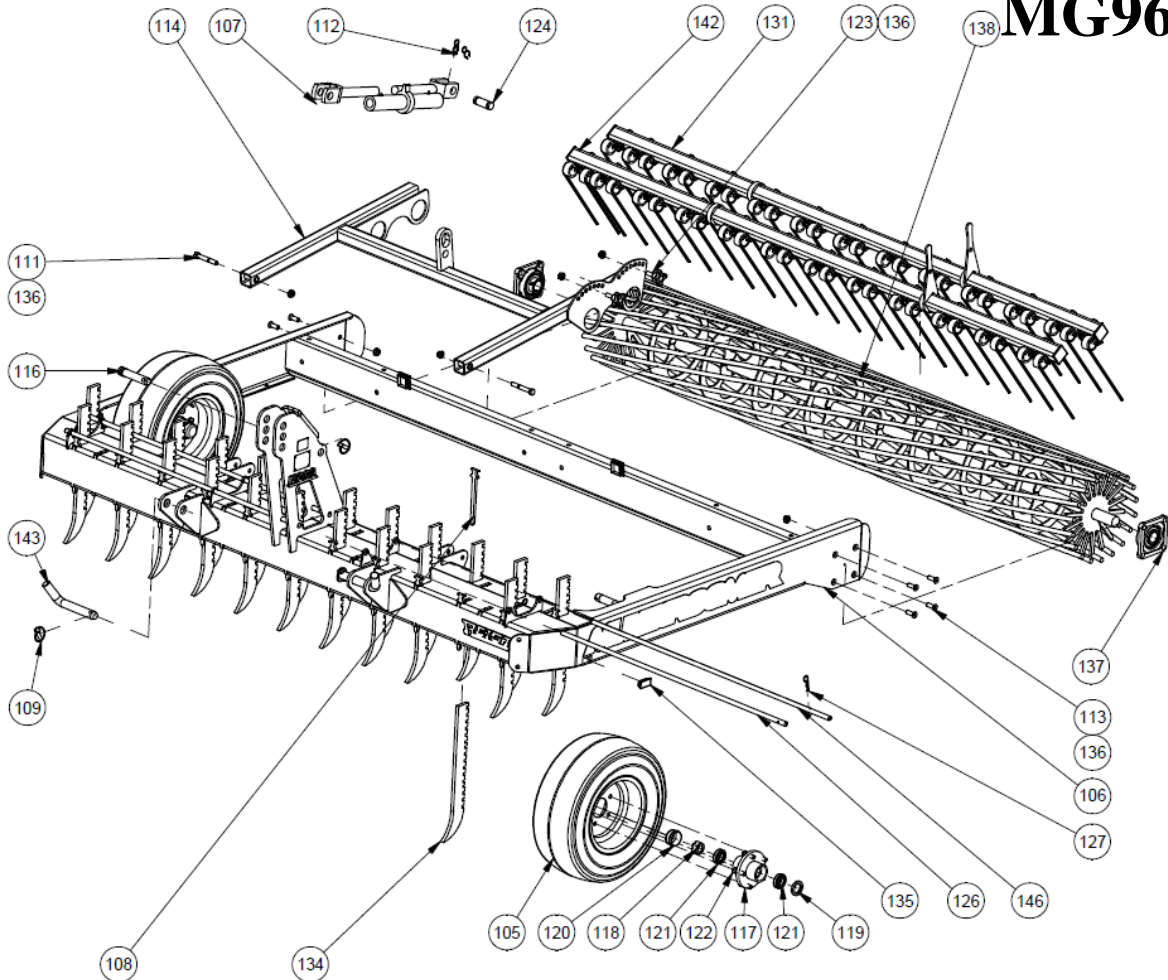
Parts List			
ITEM	QTY	PART NUMBER	DESCRIPTION
1	11	12*3	Bolt
2	11	12FSLN	Flange Nut
3	9	JD311	Tine
4	9	MG23	Tine Clip
5	1	MG0780	Rear Bar Weldment
6	1	JD311R	Right Half Tine
7	1	JD311L	Left Half Tine
8	1	MG26	Tine Clip L
9	1	MG25	Tine Clip R



MutliGroomer Parts List



MG96



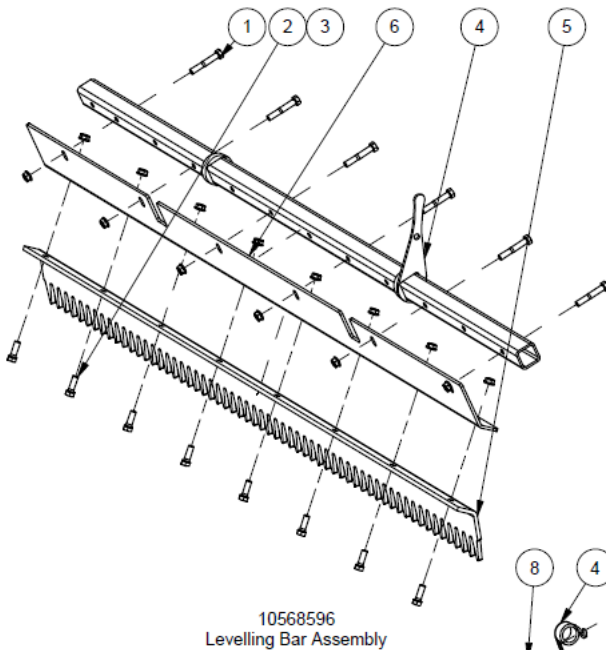
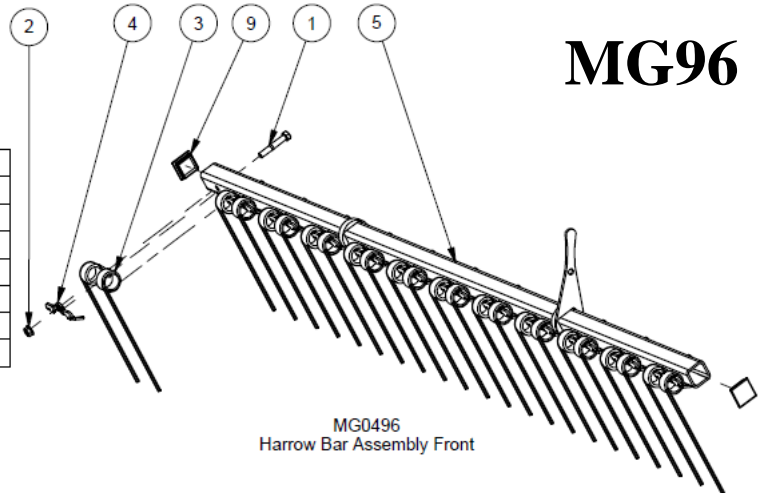
Parts List				Parts List			
ITEM	QTY	PART NUMBER	DESCRIPTION	ITEM	QTY	PART NUMBER	DESCRIPTION
105	2	8074684	Wheel 20.5x8.0-10	126	2	MG5796	Lock Shaft Front
106	1	MG70096	MultiGroomer Frame	127	4	383503	COTTERS, HAIRPIN
107	1	386501	Ratched Jack	131	1	MG0596	Harrow Bar Assembly Rear
108	23	MG02	Tooth Lock	134	23	MG011	Ripper Tooth
109	3	385507	7/16 Lynch Pin	135	2	RC1020-1	Cap
111	2	12312	Hex Bolt	136	12	12FSLN	Flange Nut
112	2	637856	Hair Pin	137	2	UCF208-108	4 Bolt Flange Bearing
113	8	12112FH	Flat Head Bolt	138	1	MGR96	Rolling Harrow Reel
114	1	MG0372	Harrow Frame	142	1	MG0496	Harrow Bar Assembly Front
116	1	387505	Pin	143	2	CAT2-1185	Cat 2 Arm Pin
117	2	H010005450	Hub	144	2	T-64-U4	Cap 3-16x2x2
118	2	SJ-114	Slotted Hex Nut	145	1	10541696	Smooth Roll Water Tank
119	2	CR523696	Seal	146	2	MG5696	Lock Shaft
120	2	D1000	Dust Cap	147	1	DW103	Read Manual Decal
121	4	L44643 L44610	Tapered Roller Bearing	148	1		Serial # Plate
122	10	500-20	Wheel bolt Bolt	149	1	RD115	Made In Canada Decal
123	2	135-052	Knob	150	2	RD139	MULTIGROOMER Decal
124	1	100x200	Pin				

MutliGroomer Parts List



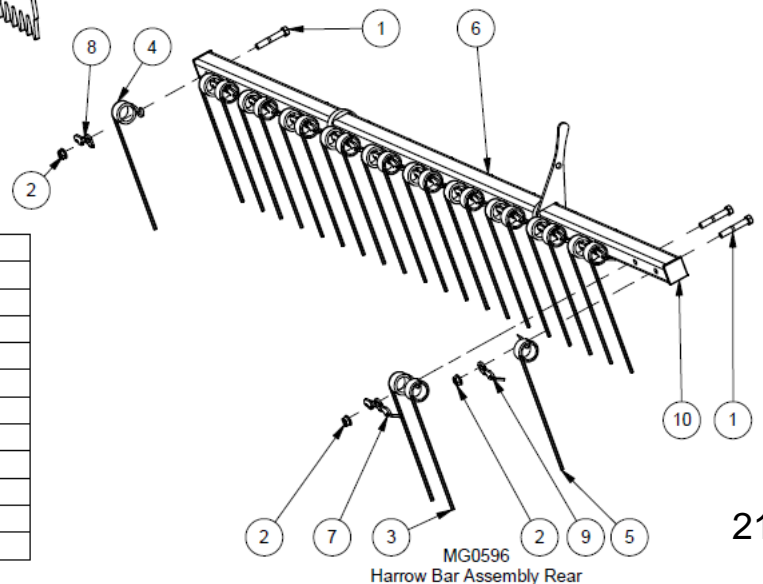
MG96

Parts List			
ITEM	QTY	PART NUMBER	DESCRIPTION
1	12	12*3	Hex Bolt
2	12	12FSLN	Flange Nut
3	12	JD311	Tine
5	1	MG0696	Bar Weldment Front
4	12	MG23	Tine Clip
9	2	T-64-U4	Cap 3-16x2x2



Parts List			
ITEM	QTY	PART NUMBER	DESCRIPTION
1	6	12*3	Hex Bolt
2	8	12112	Hex Bolt
3	14	12FSLN	Flange Nut
4	1	MG0696	Bar Weldment Front
5	1	MG0996	Levelling Blade
6	1	MG1096	Leveling Blade Base Plate

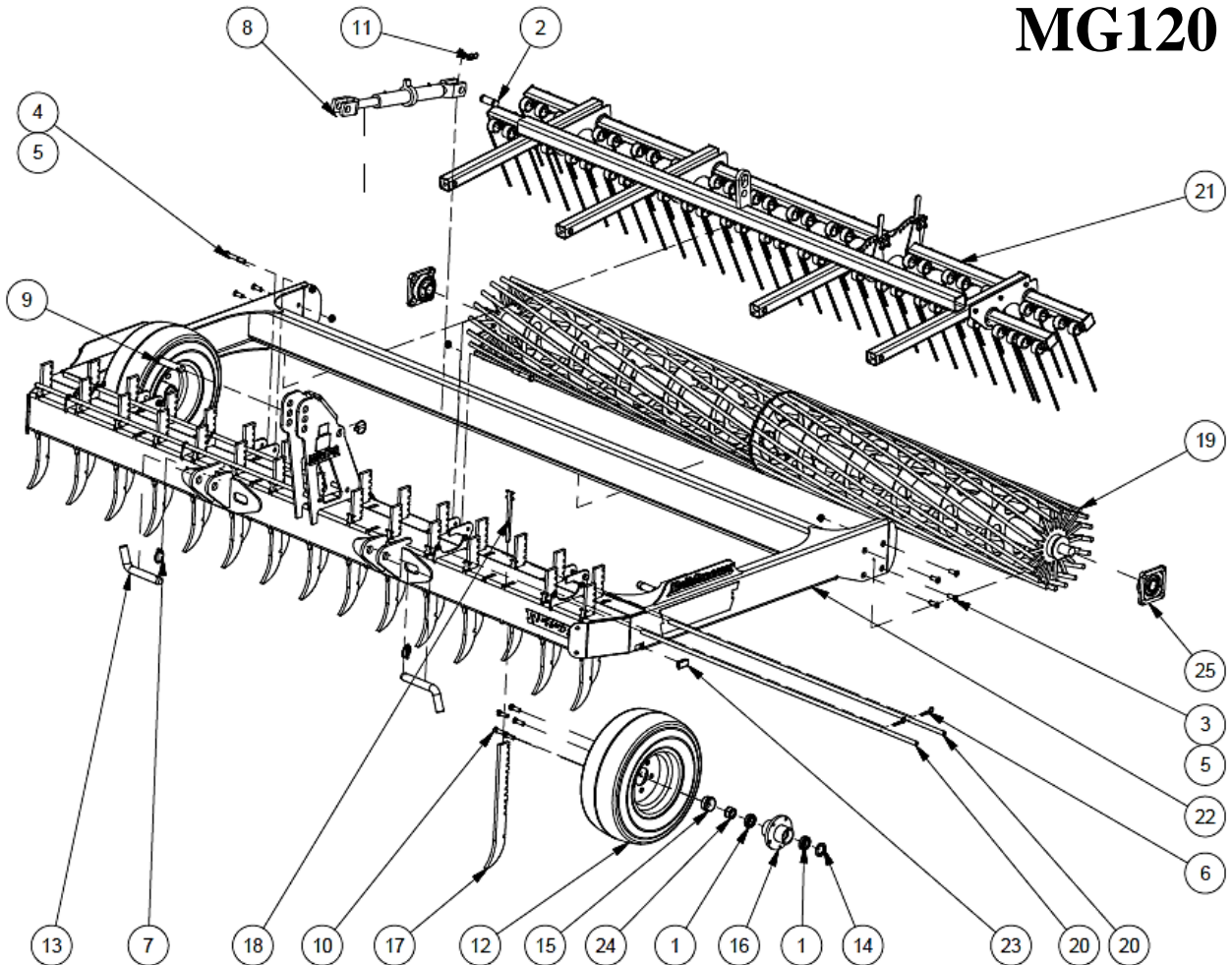
Parts List			
ITEM	QTY	PART NUMBER	DESCRIPTION
1	13	12*3	Hex Bolt
2	13	12FSLN	Flange Nut
3	11	JD311	Tine
4	1	JD311L	Left Half Tine
5	1	JD311R	Right Half Tine
6	1	MG0796	Rear Bar Weldment
7	11	MG23	Tine Clip
8	1	MG25	Tine Clip R
9	1	MG26	Tine Clip L
10	2	T-64-U4	Cap 3-16x2x2



MutliGroomer Parts List



MG120

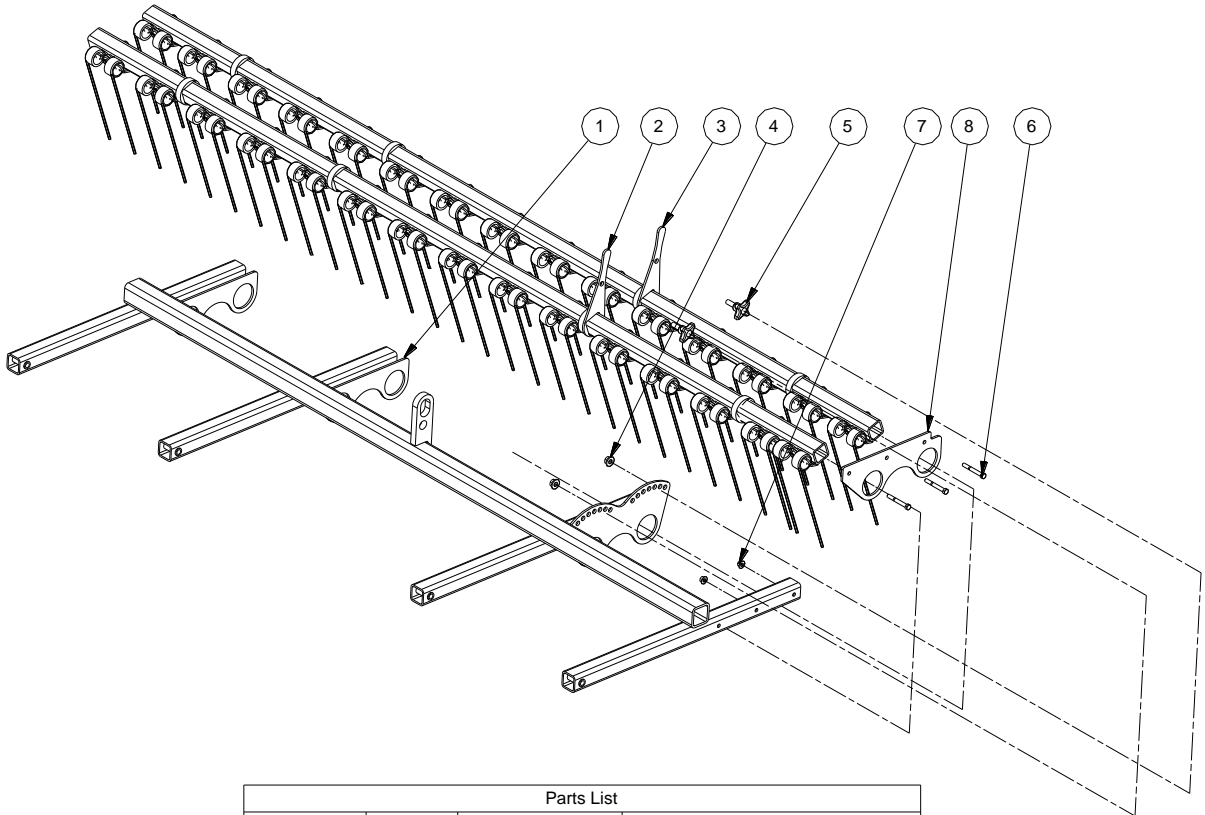


Parts List				Parts List			
ITEM	QTY	PART NUMBER	DESCRIPTION	ITEM	QTY	PART NUMBER	DESCRIPTION
1	4	L44643 L44610	Tapered Roller Bearing	14	2	CR523696	Seal
2	1	100x200	Pin	15	2	D1000	Dust Cap
3	8	12112FH	Flat Head Bolt	16	2	H010005450	Hub
4	4	12312	Hex Bolt	17	29	MG011	Ripper Tooth
5	12	12FSLN	Flange Nut	18	29	MG02	Tooth Lock
6	4	383503	COTTERS, HAIRPIN	19	1	MG36120	Split Rolling Harrow
7	3	385507	7/16 Lynch Pin	20	4	MG57120	Lock Shaft
8	1	386501	Ratched Jack	21	1	MG67120	Harrow Assembly
9	1	387505	Pin	22	1	MG70120	MultiGroomer Frame
10	10	500-20	Wheel bolt Bolt	23	2	RC1020-1	Cap
11	2	637856	Hair Pin	24	2	SJ-114	Slotted Hex Nut
12	2	8074684	Wheel 20.5x8.0-10	25	2	UCF202-108	4 Bolt Flange Bearing
13	2	CAT2-1185	Cat 2 Arm Pin				

MutliGroomer Parts List



MG120



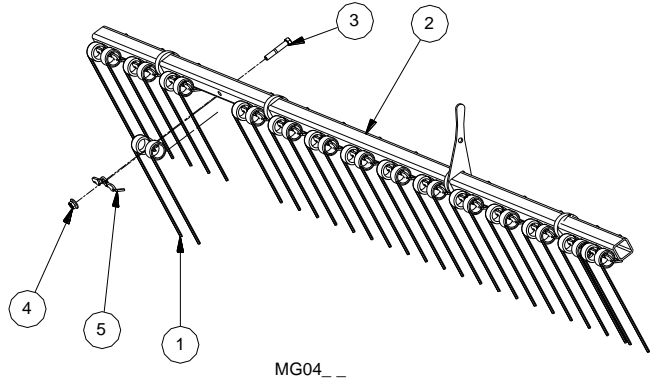
Parts List			
ITEM	QTY	PART NUMBER	DESCRIPTION
1	1	MG03_ _ _	Harrow Frame
2	1	MG04_ _	Harrow Bar Assembly Front
3	1	MG05_ _	Harrow Bar Assembly Rear
4	2	12FSLN	Flange Nut
5	2	135-052	Knob
6	3	38*3	Bolt
7	3	38SFLN	Flange Nut
8	1	MG68	Bolt on Bracket

MutliGroomer Parts List

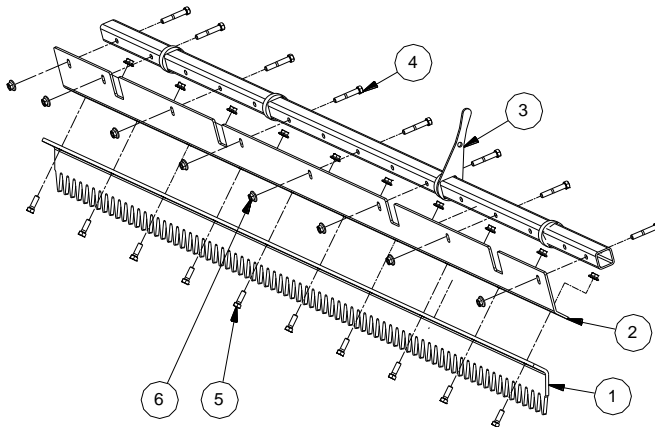


MG120

Parts List			
ITEM	QTY	PART NUMBER	DESCRIPTION
3	15	12*3	Bolt
4	15	12FSLN	Flange Nut
1	15	JD311	Tine
5	15	MG23	Tine Clip
2	1	MG06_ _	Bar Weldment Front

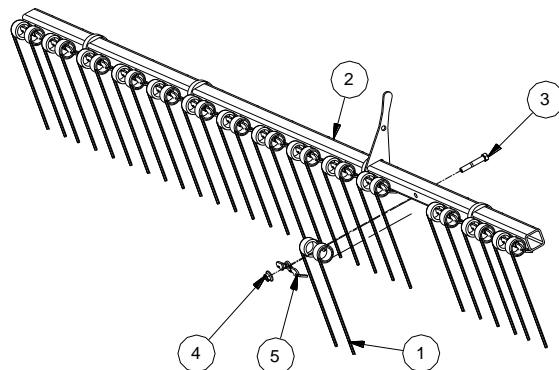


MG04_ _



Parts List			
ITEM	QTY	PART NUMBER	DESCRIPTION
4	8	12*3	Bolt
5	10	12112	Bolt
6	18	12FSLN	Flange Nut
3	1	MG06_ _	Bar Weldment Front
1	1	MG09_ _	Grader Blade
2	1	MG10_ _	Leveling Blade Base Plate

Parts List			
ITEM	QTY	PART NUMBER	DESCRIPTION
3	15	12*3	Bolt
4	15	12FSLN	Flange Nut
1	15	JD311	Tine
5	15	MG23	Tine Clip
2	1	MG07_ _	Rear Bar Weldment

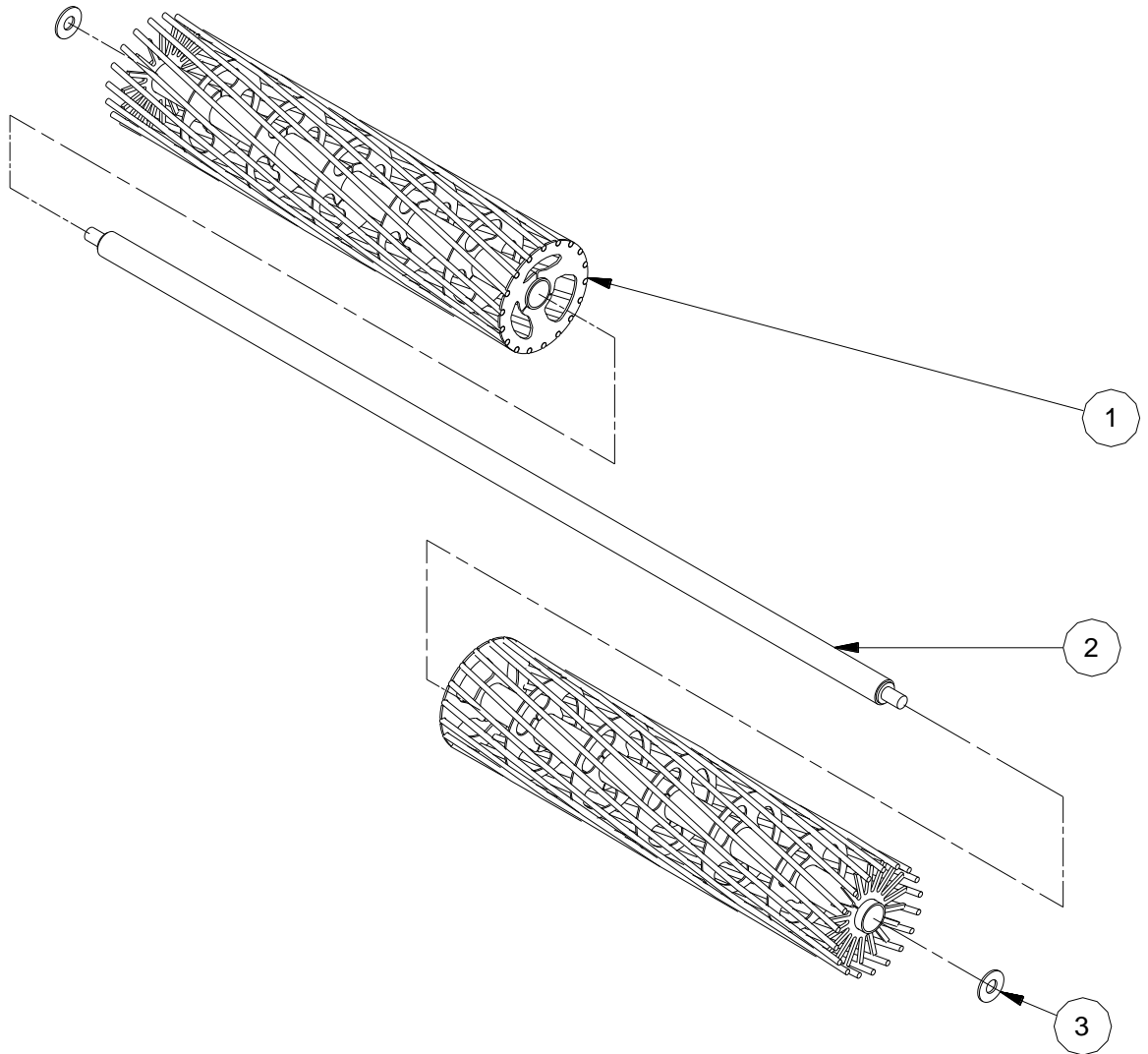


MG05_ _

MutliGroomer Parts List



MG120



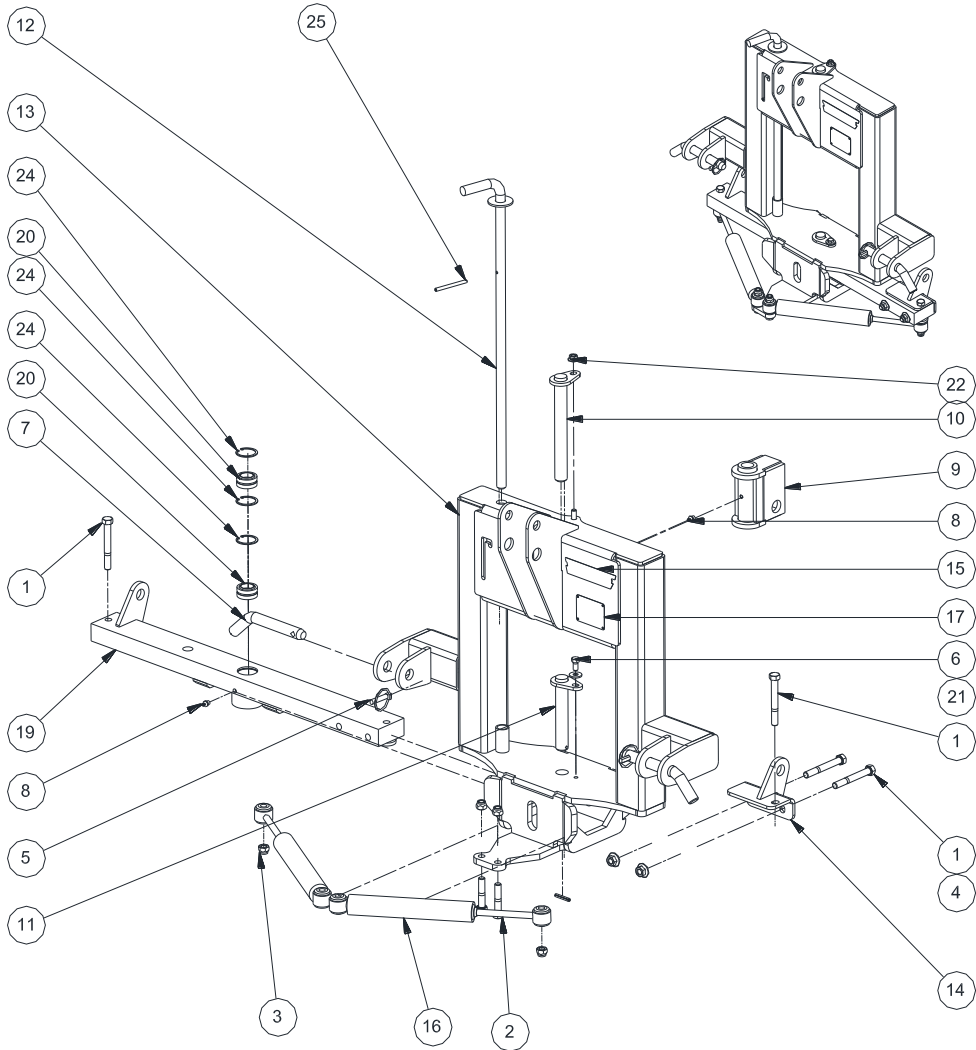
Parts List

ITEM	QTY	PART NUMBER	DESCRIPTION
1	2	MG37120	Roller (Inches Wide)
2	1	MG38120	Split Roll Shaft
3	2	MG39	Split Roll Washer

MutliGroomer Parts List

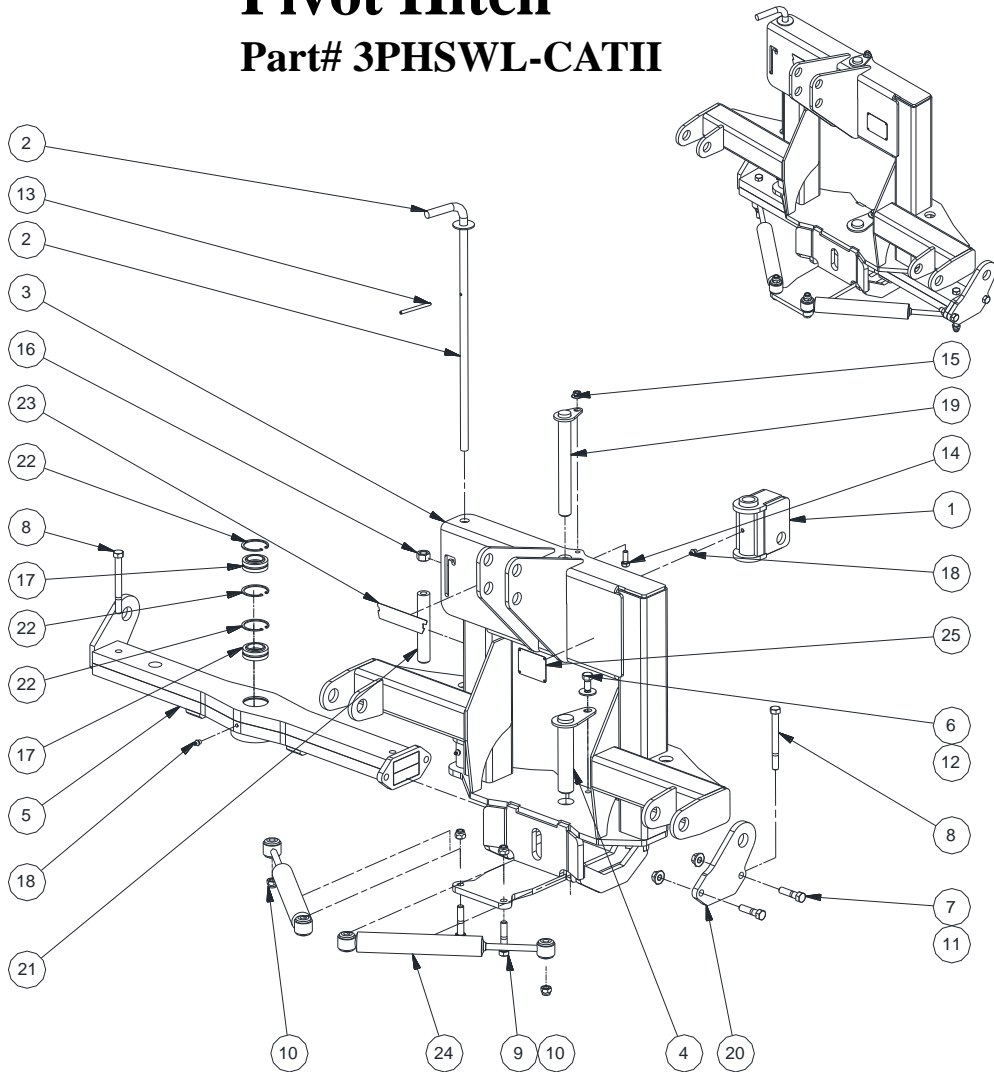


Pivot Hitch Part# 3PHSWL-CATI



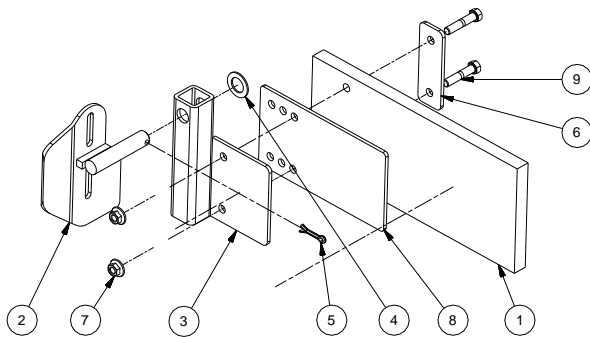
Parts List				Parts List			
ITEM	QTY	PART NUMBER	DESCRIPTION	ITEM	QTY	PART NUMBER	DESCRIPTION
1	4	12*4	Hex Bolt	14	1	MG85	Lower Hitch End
2	2	12212	Hex Bolt	15	1	RD107	Reist Decal
3	4	12CLN	Lock Nut	16	2	SS10317	Steering Stabilizer
4	2	12FSLN	Flange Nut	17	1	Serial	Serial # Plate
5	2	385507	7/16 Lynch Pin	18	1	14112RP	Roll Pin
6	1	3834	Hex Bolt	19	1	100415	Lower Pivot
7	2	CAT1-784	Cat 1 Arm Pin	20	2	HH1000ES	Self Aligning Brg
8	2	GF	1/8 NPT ST Zerk	21	1	38F	Plain Washer
9	1	MG32	Top Link Pivot	22	1	38FSLN	Flange Nut
10	1	MG33	Pin A	23	1	38*1	Hex Bolt
11	1	MG34	Pin B	24	3	N5000-162	internal retaining ring
12	1	MG44	Lock Pin	25	1	143RP	Roll Pin
13	1	MG84	3 PHT Pivot Weldment				

Pivot Hitch Part# 3PHSWL-CATII



Parts List				Parts List			
ITEM	QTY	PART NUMBER	DESCRIPTION	ITEM	QTY	PART NUMBER	DESCRIPTION
1	1	100300	Top Link Pivot	14	1	38*1	Hex Bolt
2	1	100510	Lock Pin Handle	15	1	38FSLN	Flange Nut
3	1	100525	3 PHT Pivot Weldment	16	1	58N	Hex Nut
4	1	100528	Pin B	17	2	GEG32ES	Self Aligning Brg MM
5	1	100560	Lower Pivot	18	3	GF	1/8 NPT ST Zerk
6	1	12*1	Hex Bolt	19	1	MG78	Pin A
7	2	12*2	Hex Bolt	20	1	MG81	Plate
8	2	12*5	Hex Bolt	21	1	MG82	Lock Pin
9	2	12212	Hex Bolt	22	3	N5000-206	internal retaining ring
10	4	12CLN	Lock Nut	23	1	RD107	Reist Decal
11	2	12FSLN	Flange Nut	24	2	SS10317	Steering Stabilizer
12	1	12FW	Plain Washer	25	1	Serial	Serial # Plate
13	1	143RP	Roll Pin				

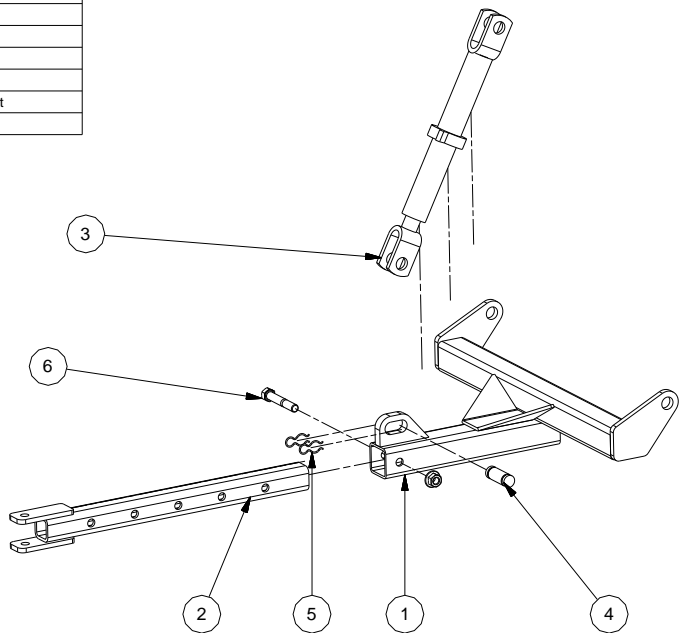
MutliGroomer Parts List



Board Scraper Part# MGBS

Parts List			
ITEM	QTY	PART NUMBER	DESCRIPTION
1	1	MG16	Rubber Scraper
2	1	MG17	Swing Base Mount
3	1	MG18	Swing Arm
4	1	1M	Washer
5	1	142CP	Cotter Pins
6	1	MG19	Metal Washer Plate
7	2	12FSLN	Flange Nut
8	1	MG62	Rubber Reinforcement
9	2	12212	Hex Bolt

Tow Hitch Part# MGTH



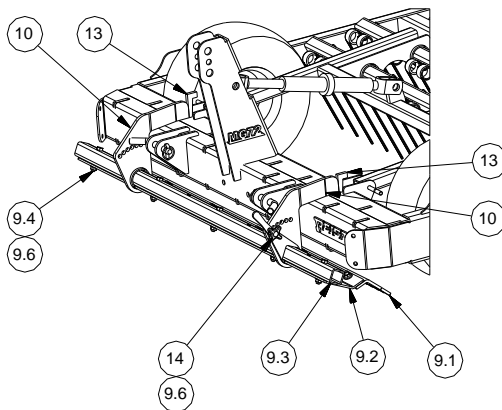
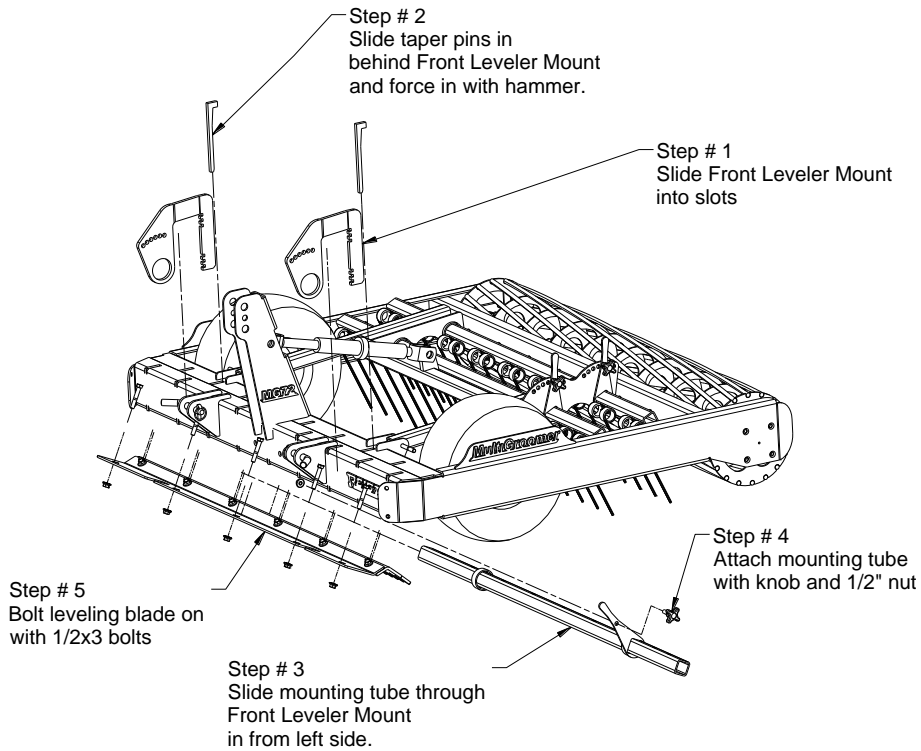
Parts List			
ITEM	QTY	PART NUMBER	DESCRIPTION
1	1	MG14	Tow Bar Weldment
2	1	MG15	Draw Bar
3	1	386501	Ratched Jack
4	1	637855	Pin
5	2	637856	Hair Pin
6	1	584	Bolt
7	1	58FSLN	Flange Nut

MutliGroomer Parts List



Front Leveling Blade

Part#



Parts List			
ITEM	QTY	PART NUMBER	DESCRIPTION
9.1	1	MG09_ _	Grader Blade
9.2	1	MG10_ _	Leveling Blade Base Plate
9.3	1	MG06_ _	Bar Weldment Front
9.4	5	12*3	Bolt
9.6	11	12FSLN	Flange Nut
10	2	MG20	Front Leveler Mount
13	2	MG21	Leveler Taper Lock
14	1	135-052	Knob

WARRANTY



All new Reist machinery is warranted to be free from defects in material or workmanship, which may cause failure under normal usage and service when used for the purpose, intended, for a period of 12 months. This warranty applies only to a new Reist product, there being no warranty of any nature in respect to new products that have been modified or altered, repaired, neglected, or used in any way, which, in the opinion of Reist adversely affects its performance.

In the event of failure of a part or parts, and upon inspection, Reist is satisfied that failure is due to defective material or workmanship within 12 calendar months, from the date of delivery to an end user, such defective part or parts will be repaired or replaced by Reist at his business location. It is the responsibility of the buyer, at his expense, to transport the machine or equipment to the manufacturer service shop or, to an authorized service depot or, alternatively, to reimburse Reist for any travel or transportation expense involved in fulfilling this warranty.

When requested by Reist, part or parts shall be returned for inspection, transportation prepaid, to a place designated by Reist. **IN NO EVENT SHALL THE BUYER BE ENTITLED TO RECOVER FOR INCIDENTAL OR CONSEQUENTIAL DAMAGES, INCLUDING, BUT NOT LIMITED TO, LOSS OF PRODUCT, INCONVENIENCE, RENTAL OR REPLACEMENT EQUIPMENT, LOSS OF PROFIT, OR OTHER COMMERCIAL LOSS.**

This warranty becomes void and null if the equipment is modified, breaks down as the result of an accident, is not operated according to manufacturers recommendations, damaged by negligence or if maintenance has not been carried out as specified.

THIS WARRANTY IS NOT TRANSFERABLE

Proof of Purchase

Date of purchase (yyyy mm dd)		Model		Serial #	
Dealer purchased from		City		State or Province	Country
First Name		Last Name		Phone # (include area code)	
Address				State or Province	Country
City	Postal Code	Reist Industries Inc. 100 Union St. Elmira Ontario N3B 2Z2		519-669-1501	

Proof of Purchase

Date of purchase (yyyy mm dd)		Model		Serial #	
Dealer purchased from		City		State or Province	Country
First Name		Last Name		Phone # (include area code)	
Address				State or Province	Country
City	Postal Code	Reist Industries Inc. 100 Union St. Elmira Ontario N3B 2Z2		519-669-1501	

**Reist Industries Inc. Ont.
100 Union St., Elmira
Ontario, Canada, N3B 2Z2
www.reistindustries.com**