



AERA SEEDER

OPERATOR & PARTS MANUAL
4 ft wide



TABLE OF CONTENTS



ITEM	PAGE
INTRODUCTION	2
SAFETY	3
CALIBRATION	4
STANDARD ROLLER ASSEMBLY	5
DOUBLE ROLLER ASSEMBLY	6
STORAGE	7
PARTS	8-15
WARRANTY	16-17

CONGRATULATIONS!!

Thank you for choosing the **Reist Area Seeder**. We feel confident that this equipment will meet your expectations in workmanship, reliability and performance.

This manual is to assist you with the safe operation of the Area Seeder.

The Reist Area Seeder

Is a versatile piece of equipment to assist you in various primary and over seeding needs.

MODEL NO. _____ **SERIAL NO.** _____.

**CAUTION !**

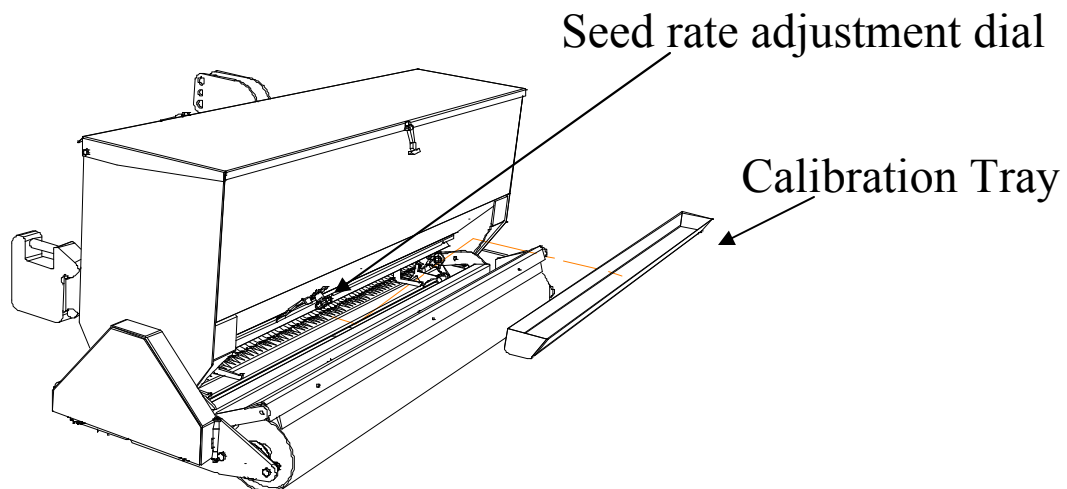
1. For proper safe operation we recommend that the tractor be equipped with an approved Roll-Over Protective Structure and Safety Belt.
2. Do not operate an engine in a confined or non-ventilated area.
3. Do not perform any adjustments or repairs with engine running.
4. Always lower 3 PT hitch to ground before performing adjustments or repairs.
5. Do not operate on excessive incline and always be careful when turning on slopes.
6. Never carry passengers on implement or tractor.
7. Never let a child operate machinery.
8. Hydraulic fluid under pressure can cause serious injury. Do Not use your hands to locate leaks.
9. It is the owner's responsibility to make sure that all operators read this manual before operating the equipment.

Calibrating Seed Flow

To calibrate the seed flow rate, you need a weigh scale and small container.

1. Pour seed into seed box. (Each kind of seed needs to be calibrated separately).
2. Insert calibration tray in bottom of seeder on mounts.
3. Set dial to preferred approximate seed rate .
4. With seed flow open, drive the distance of 166 feet. (drive at the same speed as what you are going to drive when seeding).
5. Weigh seed in the calibration tray and multiply by 2. This equals pounds per thousand feet.

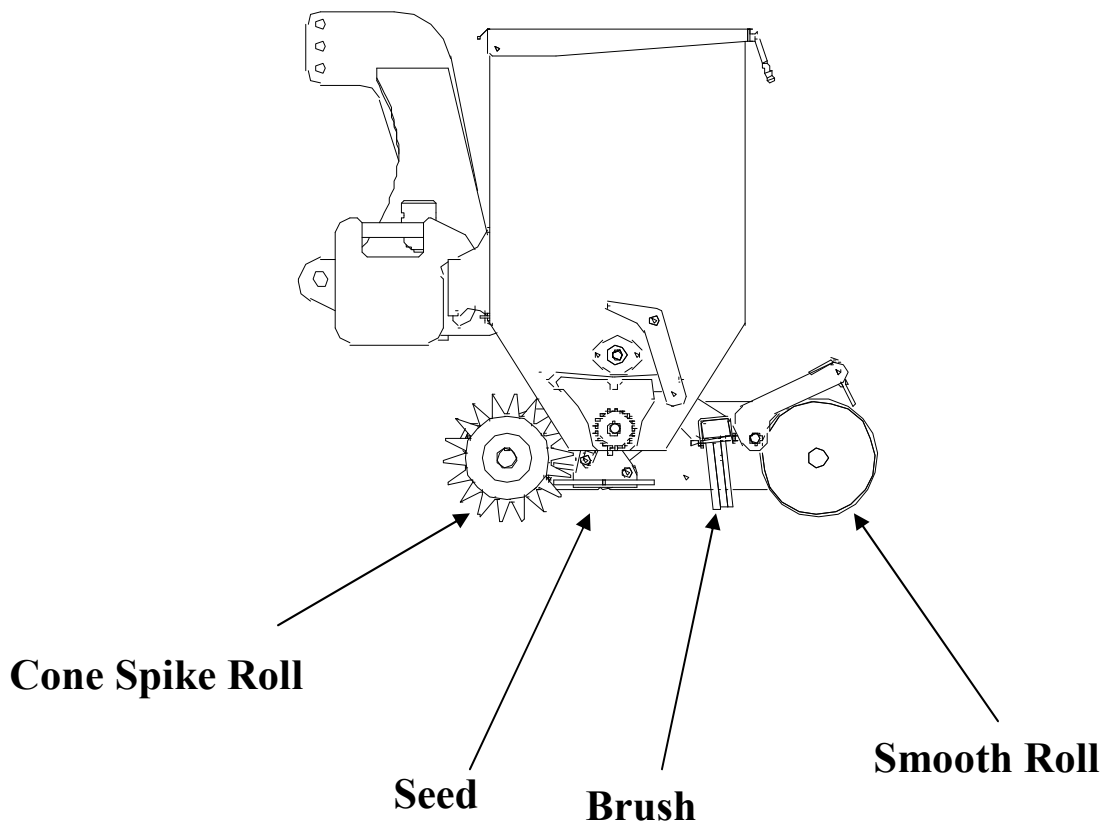
Example: 4lb x 2 = 8lb per thousand square ft.



Standard Roller Assembly



Standard

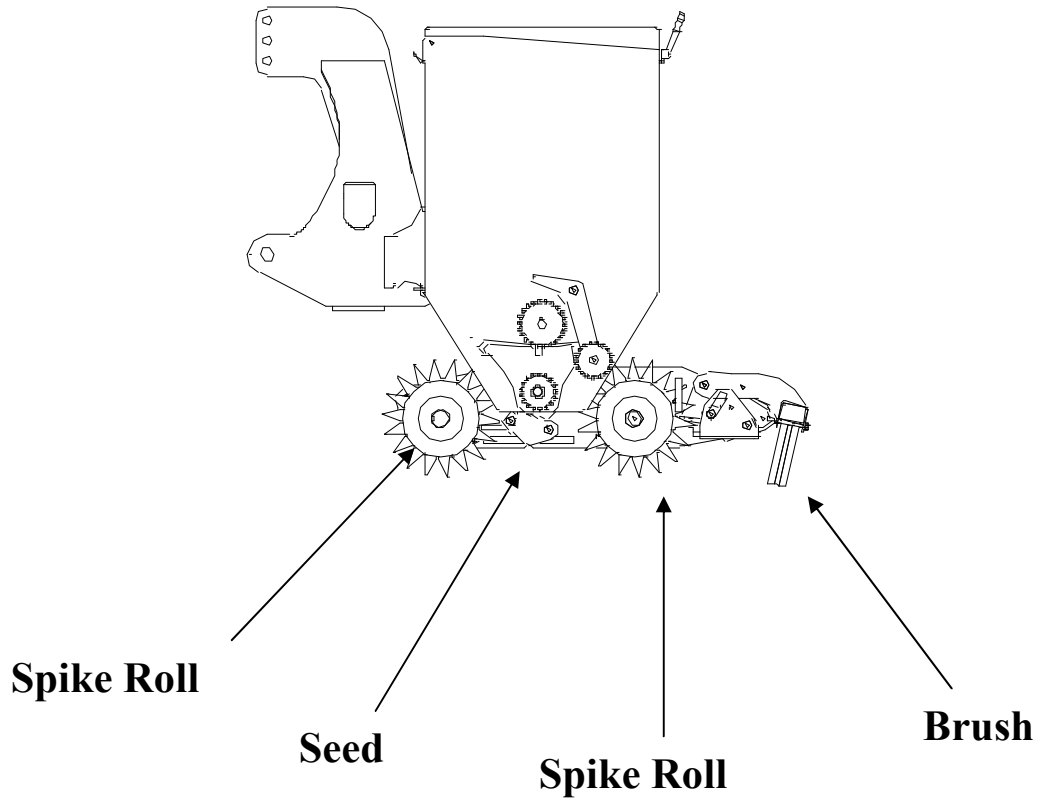


Great for primary and over seeding

For primary seeding, the spike roll breaks up clumps and packs the ground. The seed is then dropped by the seeder and the brush lightly covers the seed. The smooth roll presses the soil to keep the moisture in the ground.

For over seeding the spiked roll pokes small holes into the ground. to moisture, The seed that falls onto the grass is brushed into the holes created by the spike roller. The smooth roll presses down to cover the seed and keep the moisture in.

Double Spike Rolls (Optional)



Double the Number of Holes

Over seeding with two spiked rolls has twice the number of holes than the standard roller assembly. Both rolls poke small holes into the ground. Seed that falls onto the grass is brushed into the small holes created by the spike rolls.

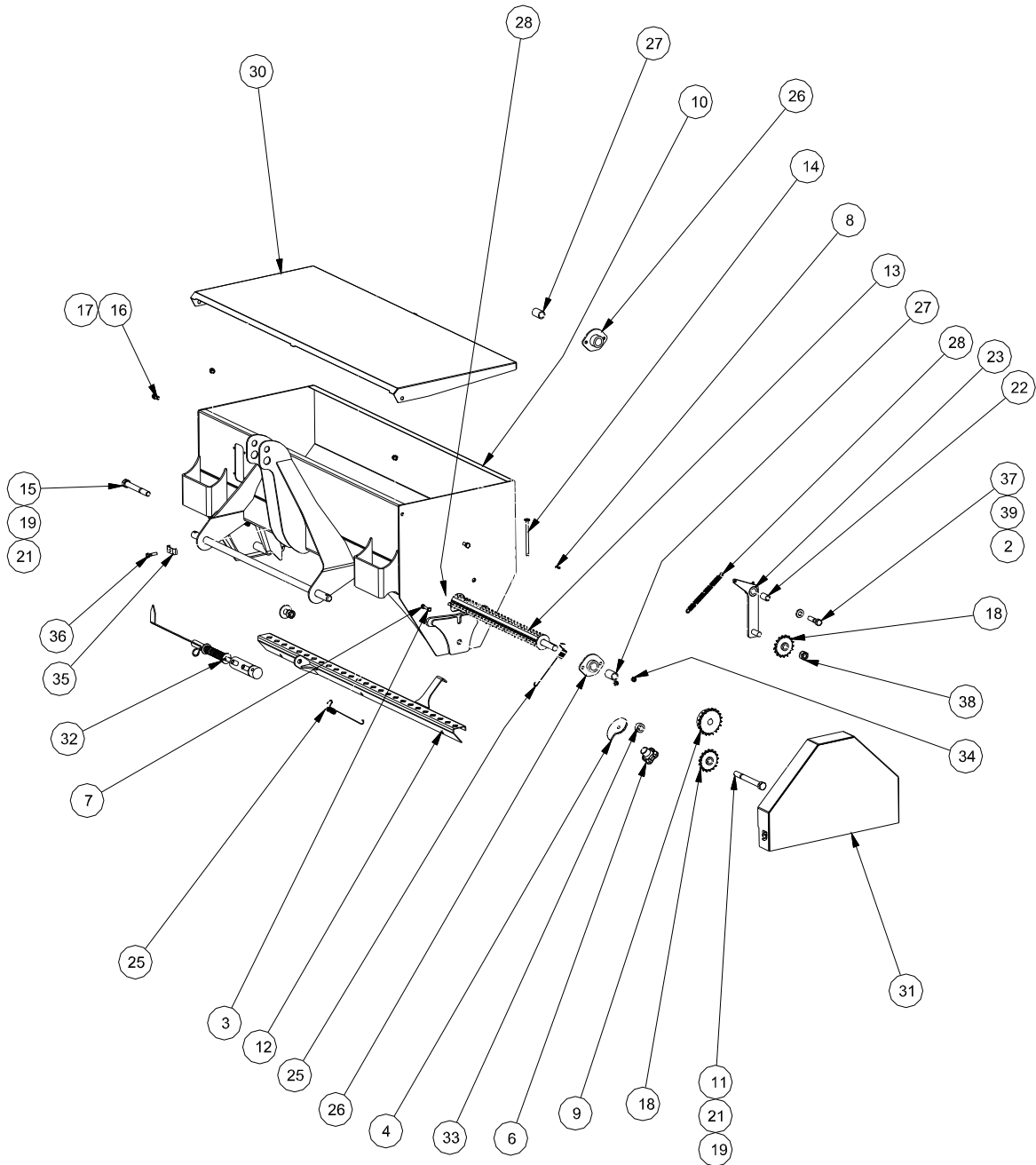
Storage



1. Store in dry ventilated area.
2. Set on either concrete pad, some wood blocks, or plywood.
3. Store with hydraulic cylinder piston rod in retracted position.
4. Clean before putting into storage.
5. Touch-up paint as needed.
6. Oil seeder chain

PARTS

Aera Seeder Frame



PARTS List



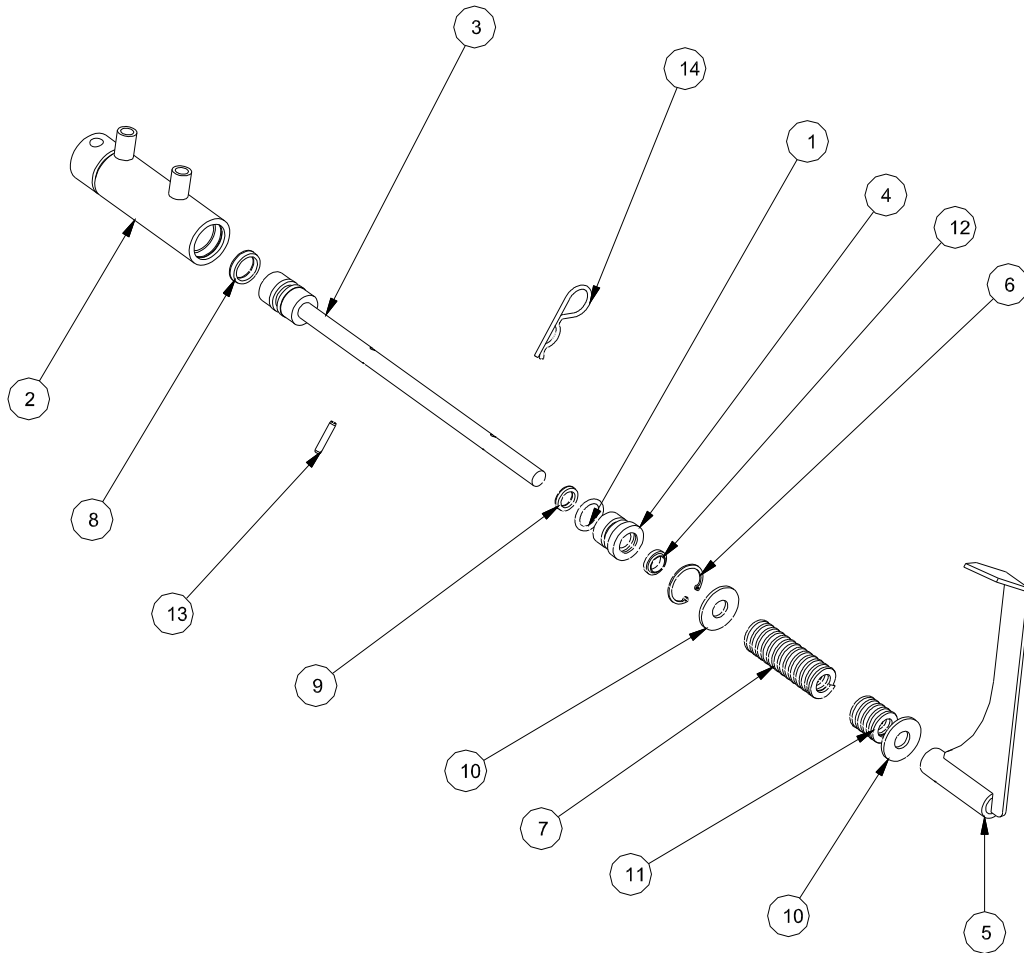
Part numbers with spaces, enter width of Aera Seeder in inches.

Example: 5027__

Enter as:502772

Parts List			
ITEM	QTY	PART NUMBER	DESCRIPTION
1	2	12*2	1/2x2 NC Bolt
2	1	12FL	Washer
3	1	142	1/4x2 NC Bolt
4	1	1026	Seed Rate Dial
5	2	12N	1/2 NC Nut
6	1	134-022	Knob
7	2	14N	1/4 NC Nut
8	1	1812CP	1/8 Cotter Pin
9	1	40B21-3/4	Sprocket
10	1	5002__	Aera Seeder Frame
11	1	586	5/8x6 NC bolt
12	1	5008__	Slider Assembly
13	1	5009__	Agitater Shaft
14	1	5013	Shield Hinge Pin
15	1	585	5/8x5 NC Bolt
16	2	38*1	Bolt
17	2	38CLN	3/8 NC Lock Nut
18	2	20401708	Idler Sprocket
19	2	58F	5/8 Flat Washer
20	2	58FW	5/8 Flat Washer
21	2	58N	58 NC Nut
22	1	5005	Tightener Bushing
23	1	5013	Chain Tightener
24	1	GF	Grease Zerk
25	6	H446	Slider Spring
26	2	5006	Seeder Brg Bracket
27	2	B1216-12	Oilite Bushing
28	1	TE1588-203-1016	Chain Tensioner
29	1	40RC	Drive Chain (not shown)
30	1	5003__	Lid
31	1	5007L	Shield
32	1	5027	Cylinder Assembly
33	1	5015	Idler Spacer
34	4	516N	Nut
35	1	5016	Hose Clip
36	1	516*2	Bolt
37	1	12*2	Bolt
38	1	58N	Nut
39	1	12N	Nut

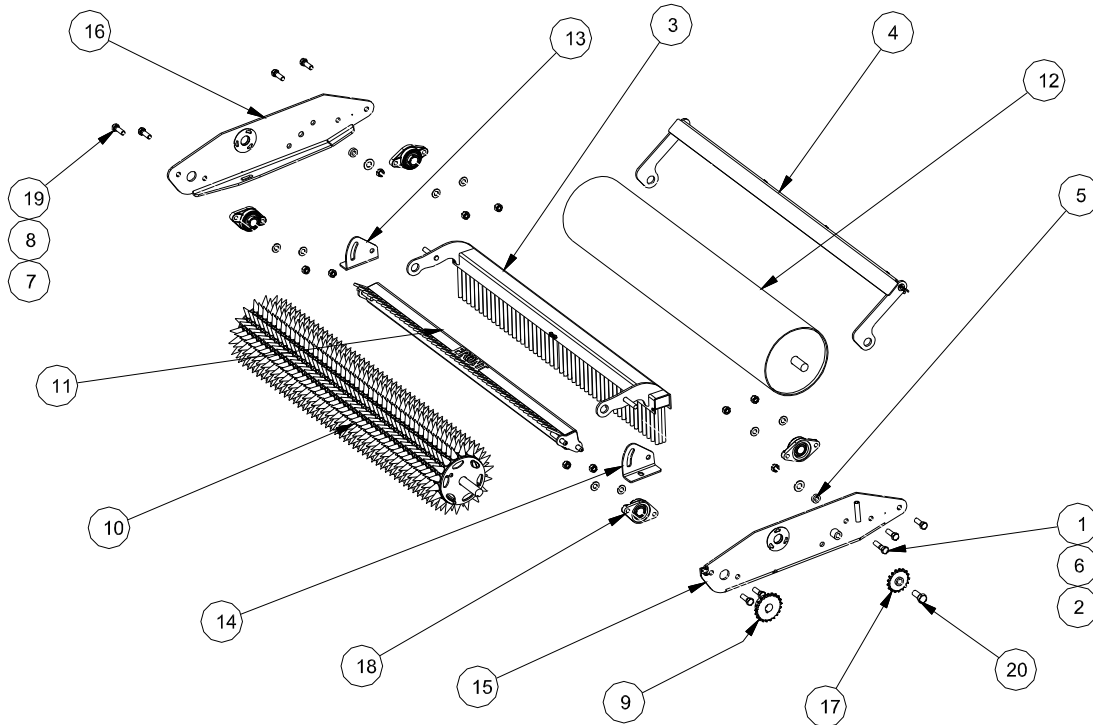
PARTS Cylinder



Parts List			
ITEM	QTY	PART NUMBER	DESCRIPTION
1	1	210	O'RING
2	1	5042	Cylinder Tube
3	1	5044	Stem & Piston
4	1	5045	Gland
5	1	5046	Open Shut Indicator
6	1	N5000-106	Internal Snap Ring
7	1	M-17	Long Compression Spring
8	1	U12-0.75-18B	Polly Pack
9	1	U12-0.50-SQB	Polly Pack
10	2	12FL	Washer
11	1	M-12	Short Compression Spring
12	1	ST-50	Wiper
13	1	3161RP	Roll Pin
14	1	383503	Hairpin

PARTS

Standard Roll Assembly



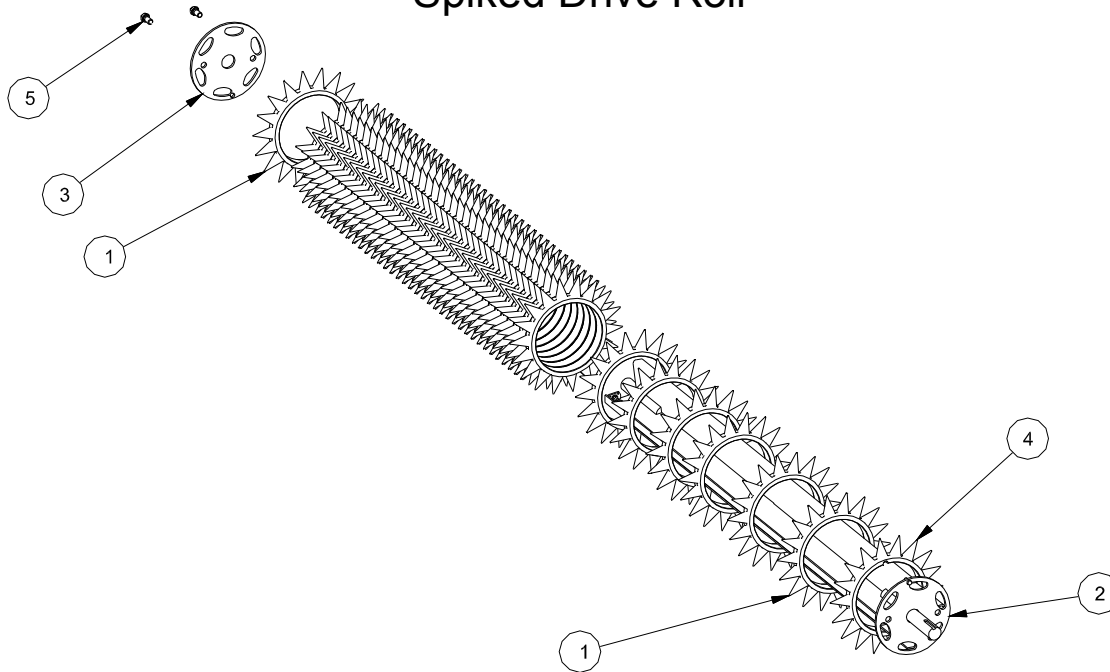
Part numbers with spaces, enter width of Aera Seeder in inches.
 Example: 5027__
 Enter as:502772

Parts List			
ITEM	QTY	PART NUMBER	DESCRIPTION
1	2	12*2	1/2x2 NC Bolt
2	2	12N	1/2 NC Nut
3	1	5026__	Brush Assembly
4	1	5027__	Smooth Roll Scraper
5	2	5028	Scraper Bushing
6	2	58FW	5/8 Flat Washer
7	8	12FW	1/2 Flat Washer
8	8	12N	1/2 NC Nut
9	1	40B21-1-1/2	Drive Sprocket
10	1	5014__	Spike Drive Roll
11	1	5015__	Front Peg Scraper
12	1	5016__	Smooth Roll
13	1	5053	Peg Scraper Hinge Right
14	1	5052	Peg Scraper Hinge Left
15	1	5023	Side Plate Left S
16	1	5024	Side Plate Right S
17	1	20401708	Idler Sprocket
18	4	UCFL205-16	Bearing
19	8	12112	Bolt
20	1	58112	Bolt

PARTS Spiked Drive Roll



Spiked Drive Roll



Part numbers with spaces, enter width of Aera Seeder in inches.

Example: 5027__

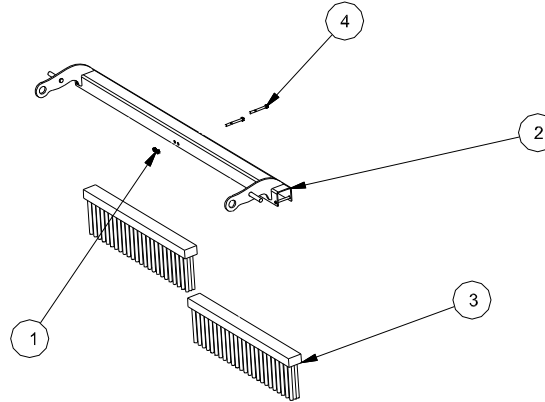
Enter as:502772

Parts List			
ITEM	QTY	PART NUMBER	DESCRIPTION
1	43	5047	Seeder Spike Light
2	1	5051__	Drive Roll Light
3	1	5049	Spike Washer
4	1	5050	Notched Seeder Spike Light
5	2	3834	Bolt

PARTS Broom & Scraper



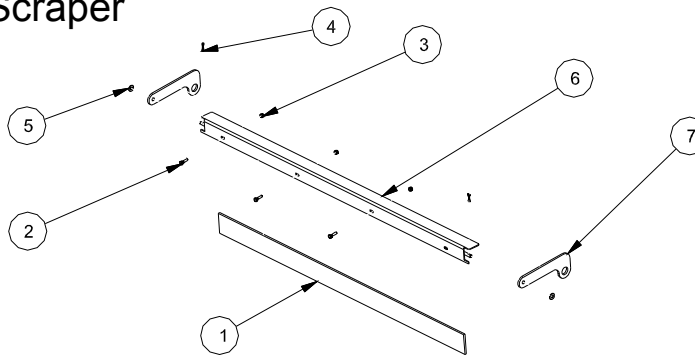
Brush Assembly



Part numbers with spaces, enter width of Aera Seeder in inches.
 Example: 5027__
 Enter as:502772

Parts List			
ITEM	QTY	PART NUMBER	DESCRIPTION
1	2	1/4 NC Nut	Hex Nut
2	1	5039__	Aera Seeder Broom Mount
3	2	2010	Main Frame Brush
4	2	14212	Bolt

Smooth Roll Scraper



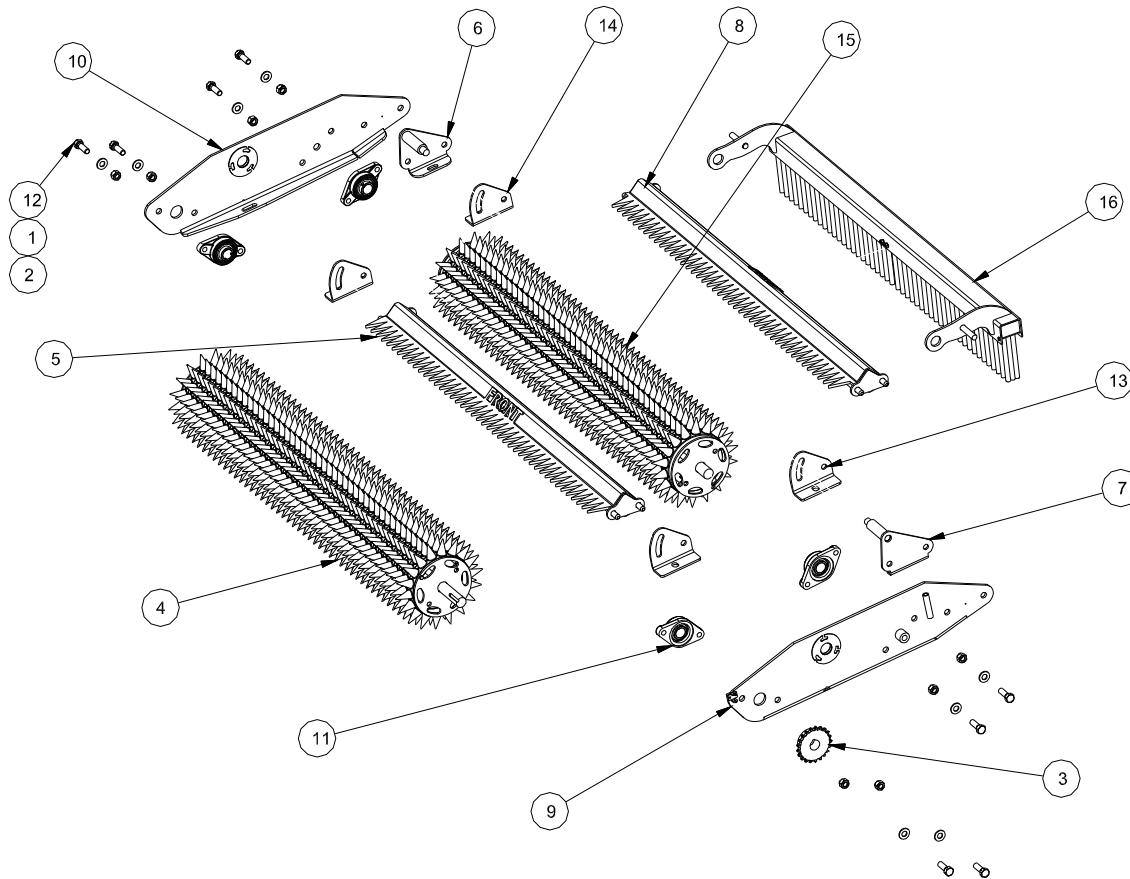
Part numbers with spaces, enter width of Aera Seeder in inches.
 Example: 5027__
 Enter as:502772

Parts List			
ITEM	QTY	PART NUMBER	DESCRIPTION
1	1	1/4x3x__UHMW	UHMW Scraper
2	3	14*1	1/4x1 NC Nut
3	3	14CLN	1/4 Lock Nut
4	2	1834CP	Cotter Pin
5	2	38F	3/8 Flat Washer
6	1	5040__	Smooth Roll Scraper Angle
7	2	5041	Scraper Bracket

PARTS Double Spike Roll



Double Spike Roll Assembly



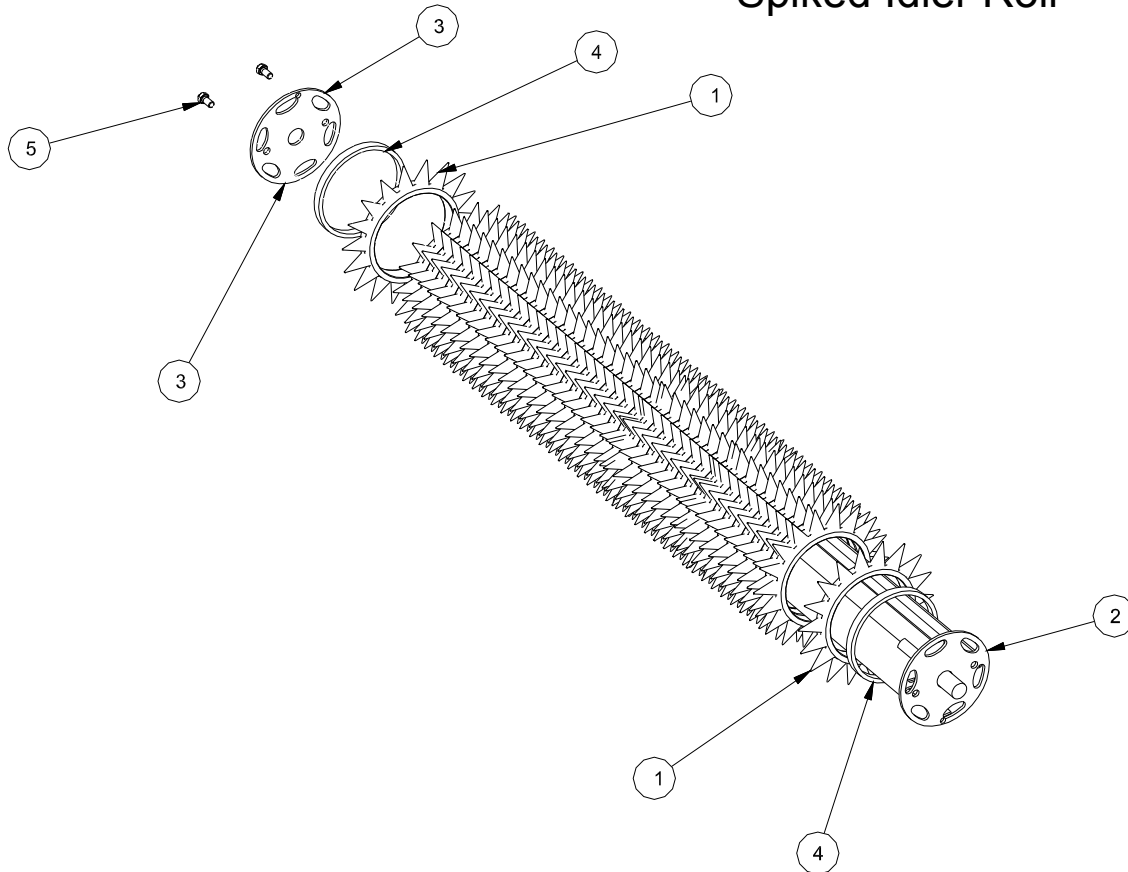
Part numbers with spaces, enter width of Aera Seeder in inches.
 Example: 5027__
 Enter as:502772

Parts List			
ITEM	QTY	PART NUMBER	DESCRIPTION
1	8	12FW	1/2 Flat Washer
2	8	12N	1/2 NC Nut
3	1	40B21-1-1/2	Drive Sprocket
4	1	5014__	Spike Drive Roll
5	1	5015__	Front Peg Scraper
6	1	5017	Rear Broom Bracket Right
7	1	5018	Rear Broom Bracket Left
8	1	5021__	Peg Scraper Rear
9	1	5023	Side Plate Left S
10	1	5024	Side Plate Right S
11	4	UCFL205-16	Bearing
12	8	12112	Bolt
13	2	5052	Peg Scraper Hinge Left
14	2	5053	Peg Scraper Hinge Right
15	1	5054__	Spike Idler Roll
16	1	5026__	Brush Assembly

PARTS Spiked Idler Roll



Spiked Idler Roll



Part numbers with spaces, enter width of Aera Seeder in inches.
 Example: 5027 __ __
 Enter as:502772

Parts List			
ITEM	QTY	PART NUMBER	DESCRIPTION
1	43	5047	Seeder Spike Light
2	1	5048 __ __	Rear Roll Light
3	1	5049	Spike Washer
4	2	5051	Rear Spike Spacer
5	2	3834	Bolt

WARRANTY



All new Reist machinery is warranted to be free from defects in material or workmanship, which may cause failure under normal usage and service when used for the purpose, intended, for a period of 12 months.

This warranty applies only to a new Reist product, there being no warranty of any nature in respect to new products that have been modified or altered, repaired, neglected, or used in any way, which, in the opinion of Reist adversely affects its performance.

In the event of failure of a part or parts, and upon inspection, Reist is satisfied that failure is due to defective material or workmanship within 12 calendar months, from the date of delivery to an end user, such defective part or parts will be repaired or replaced by Reist at his business location. It is the responsibility of the buyer, at his expense, to transport the machine or equipment to the manufacturer service shop or, to an authorized service depot or, alternatively, to reimburse Reist for any travel or transportation expense involved in fulfilling this warranty.

When requested by Reist, part or parts shall be returned for inspection, transportation prepaid, to a place designated by Reist.

Continued on next page....

WARRANTY



IN NO EVENT SHALL THE BUYER BE ENTITLED TO RECOVER FOR INCIDENTAL OR CONSEQUENTIAL DAMAGES, INCLUDING, BUT NOT LIMITED TO, LOSS OF PRODUCT, INCONVENIENCE, RENTAL OR REPLACEMENT EQUIPMENT, LOSS OF PROFIT, OR OTHER COMMERCIAL LOSS.

This warranty becomes void and null if the equipment is modified, breaks down as the result of an accident, is not operated according to manufacturers recommendations, damaged by negligence or if maintenance has not been carried out as specified.

THIS WARRANTY IS NOT TRANSFERABLE.

**Reist Industries (Elmira) Ont.
100 Union St., Elmira
Ontario, Canada, N3B 2Z2
www.reistindustries.com**