



MultiGroomer

OPERATOR & PARTS MANUAL

MG60, MG72, MG96, MG120

Serial # from 12131 to K2417



<u>TABLE OF CONTENTS</u>	
---------------------------------	--

<u>ITEM</u>	<u>PAGE</u>
INTRODUCTION	2
HORSE SAFETY	3
SAFETY	3-4
DAILY CHECK LIST	5
SETUP INSTRUCTIONS	6
OPERATION INSTRUCTIONS	7
OPTIONAL ATTACHMENTS	8-10
PARTS --MG60	11-12
PARTS --MG72	13-14
PARTS --MG96	15-16
PARTS --MG120	17-19
PIVOT HITCH	20
BOARD SCRAPER & TOW HITCH	21
FRONT LEVELING BLADE	22
WARRANTY	23

CONGRATULATIONS!

Thank you for choosing the **REIST MultiGroomer**. We feel confident that this equipment will meet your expectations in workmanship, reliability and performance.

This manual is to assist you with the safe operation of the **REIST MultiGroomer**. The MultiGroomer was primarily designed to level and groom indoor and outdoor horse arenas but can also be used for landscaping. The heavy ripper teeth are strong enough to level frozen sand or soil. Our experience has shown us that there are many difference types of sand, soil, or special products for riding arenas and the Reist MultiGroomer is the one to do the job right. The two main options to choose from are either the 2 rows of harrow teeth or a leveling blade with 1 row of harrow teeth. There are some products that the leveling blade will not work in because the material drags and bunches up. For this you need the 2 rows of harrow teeth. For sandy soil the leveling blade is required.

Two hitch options are available. The Drawbar Hitch is so that the MultiGroomer can be use with equipment that isn't equipped with 3PHT. And there is the Pivot Hitch which all the advantages are explained later on in the manual.

GENERAL SAFETY



- **Careful operation is the best assurance against accidents. It is the owner's responsibility to make sure that all operator's read this manual before operating the equipment.**
- **Familiarize yourself with all controls and always be ready to stop equipment quickly in case of emergency.**
- **Never let a child operate machinery.**
- **Protect yourself by wearing ear protection.**

Horse Safety

To prevent injury to a horse

- **Before using the Roto-Groomer check the complete machine including the tractor for broken or missing parts and repair if necessary.**
- **When done grooming, check the groomer again for broken or missing parts.**
- **If there is something missing find it before letting horses use the riding area. Use a metal detector if necessary to find the part.**



CAUTION



OPERATING SAFETY

- **For proper safe operation we recommend that the tractor be equipped with an approved Roll-Over Protective Structure and Safety Belt.**
- **Do not operate an engine in confined or non ventilated area.**
- **Do not perform any adjustments or repairs with engine running.**
- **Always lower 3 PT hitch to ground before performing adjustments or repairs.**
- **Do not operate on excessive incline and always be careful when turning on slopes.**
- **Never carry passengers on implement or tractor.**
- **Stay clear when machine is in operation.**
- **Stop tractor when getting off.**

CAUTION

TRANSPORT SAFETY

- **Use proper safety lights on public roads.**
- **Be alert while driving on road and never carry passengers.**

Check List



1. **Make sure all bolts are tight (tighten if necessary).**
2. **Check for worn or broken parts (replace if necessary).**
3. **Grease bearings every 100 hrs. Do Not Over Grease.**

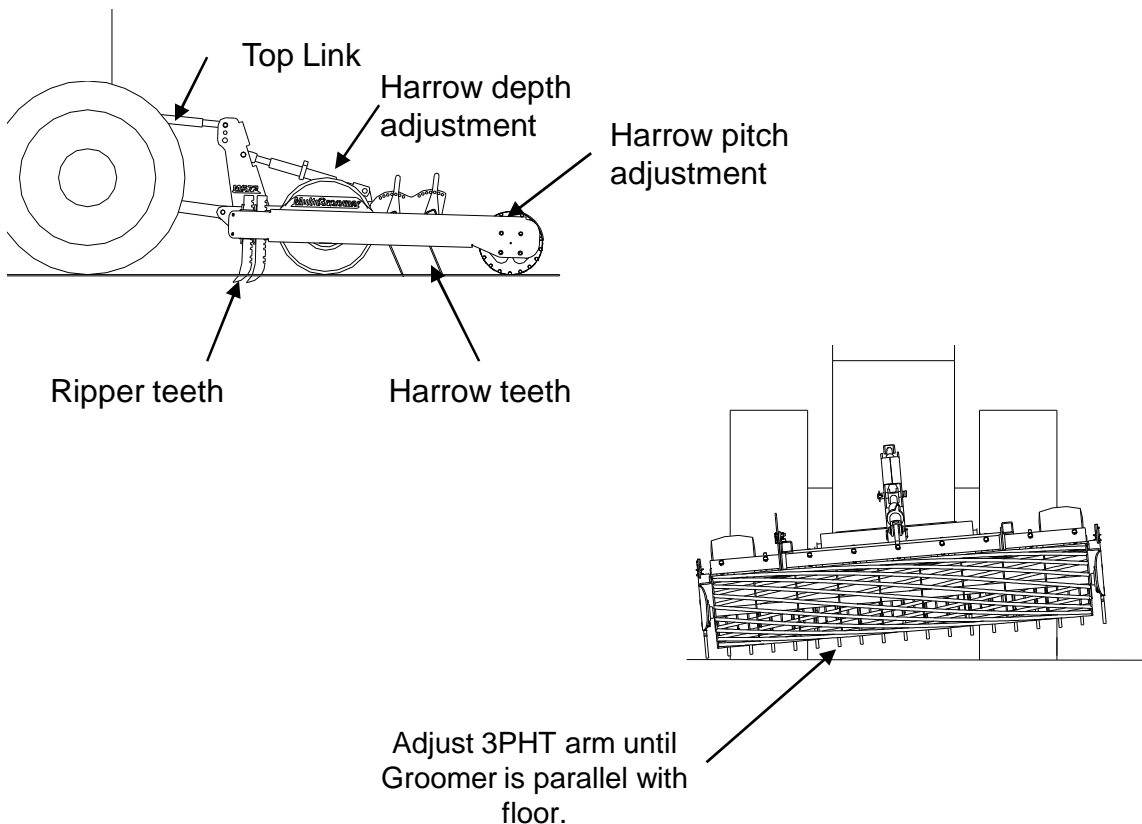
Important Setup Instructions

The Multi Groomer is mounted to the tractor with 3pth category 1. An Optional Drawbar hitch is also available to be towed with tractor or ATV.

It is **IMPORTANT** that proper adjustments are made to achieve best results.

Setup:

1. Use proper pin & bushing sizes when attaching Multigroomer to tractor.
2. Have the tractor and MultiGroomer on level ground preferably concrete for initial setup.
3. Lower Multigroomer to ground, putting 3 PTH lever to max. down position and adjust top link until front wheels and roller touches the ground.
4. Lift MultiGroomer approx. 1 inch off of ground and adjust 3pth arm so that the Groomer is parallel with the floor. The distance should be the same within a 1/4" from side to side.
5. If the MultiGroomer has the Leveling Blade option, lower the MultiGroomer to the ground and adjust the leveling blade so that it touches the ground on each side.

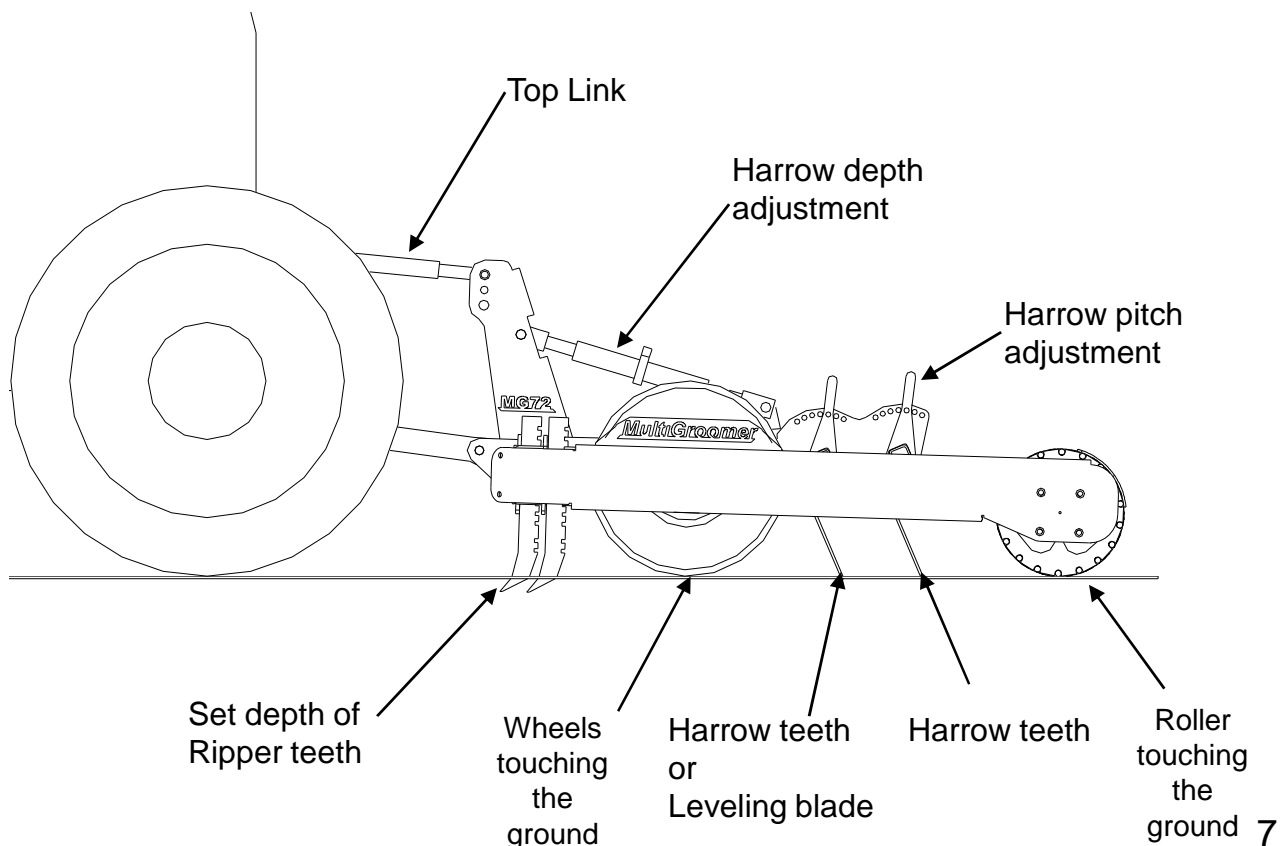


Operation Instructions

The Multi Groomer is mounted to the tractor with 3rd category 1. An Optional Drawbar hitch is also available to be towed with tractor or ATV. It is **IMPORTANT** that proper adjustments are made to achieve best results.

Operation:

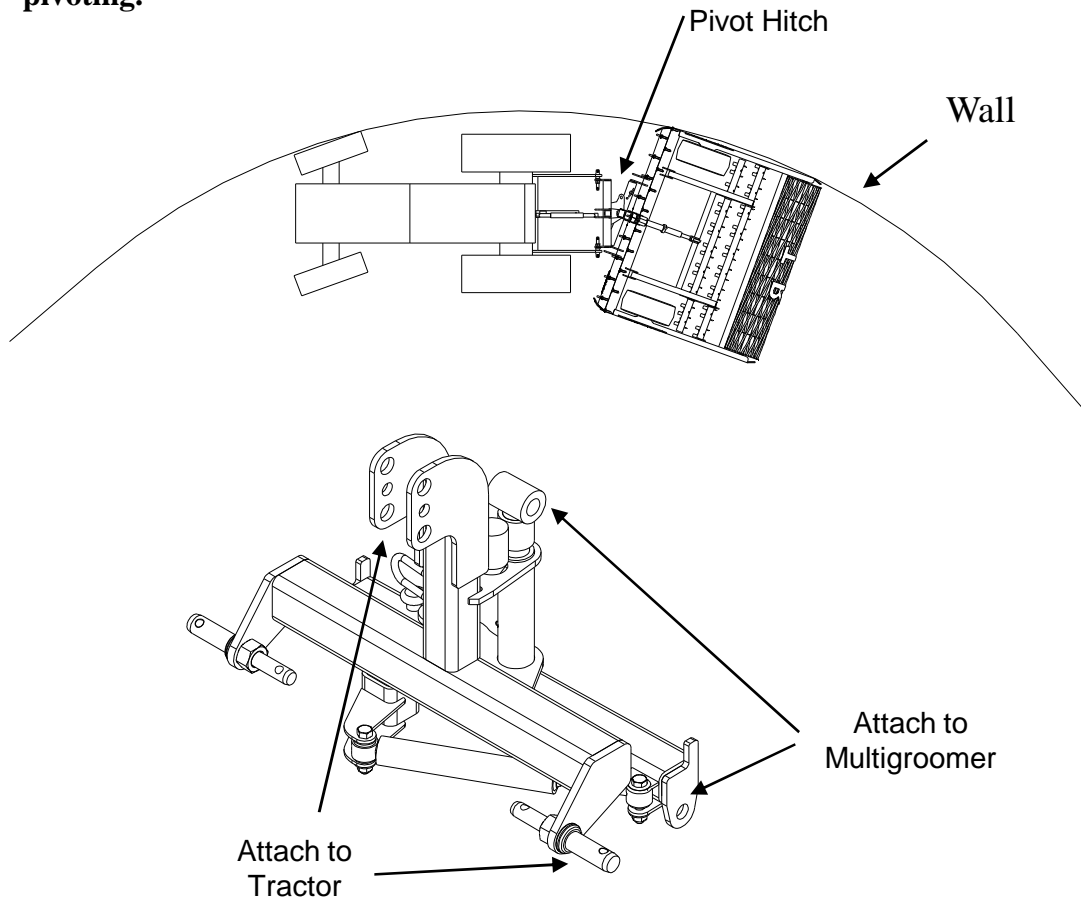
1. With 3 PTH lever in max. down position start Grooming at 4 to 8 km per hour.
2. With the leveling blade adjust the depth so that there is always a small amount of sand being dragged along.
3. Using this method of adjustment the MultiGroomer will remove high spots & fill in low spots.
4. For best results use alternative driving patterns as you groom.



Advantages of the 3PTH Pivot Attachment

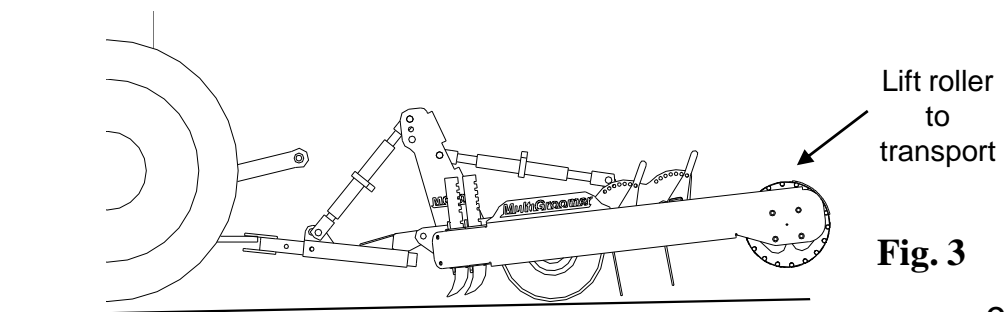
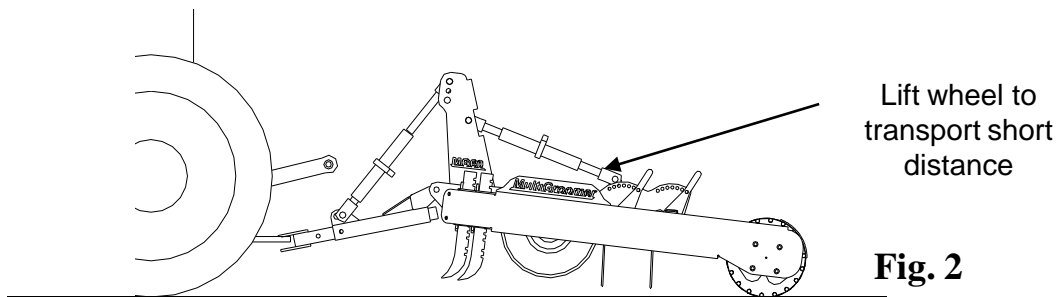
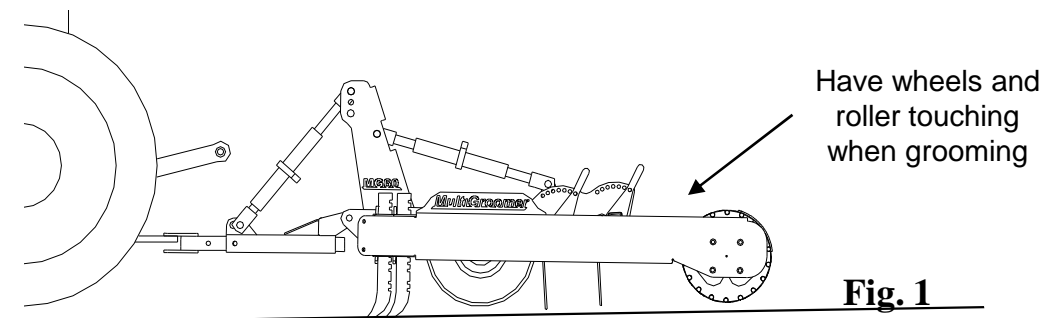
The 3pth Pivot Attachment mounts between the tractor and the MultiGroomer. The advantages with this attachment is:

1. It doesn't torque sideways when turning.
2. Doesn't swing out and hit fence or the wall when turning.
3. Enables you to get into the corners and closer to the fence/wall of your arena or corral.
4. Doesn't push the soil to the side and into the corners when turning.
5. Automatically swings into straight position when Groomer is lifted.
6. When doing heavy ripping with front teeth a pin is easily dropped in to disable pivoting.



Tow Attachment

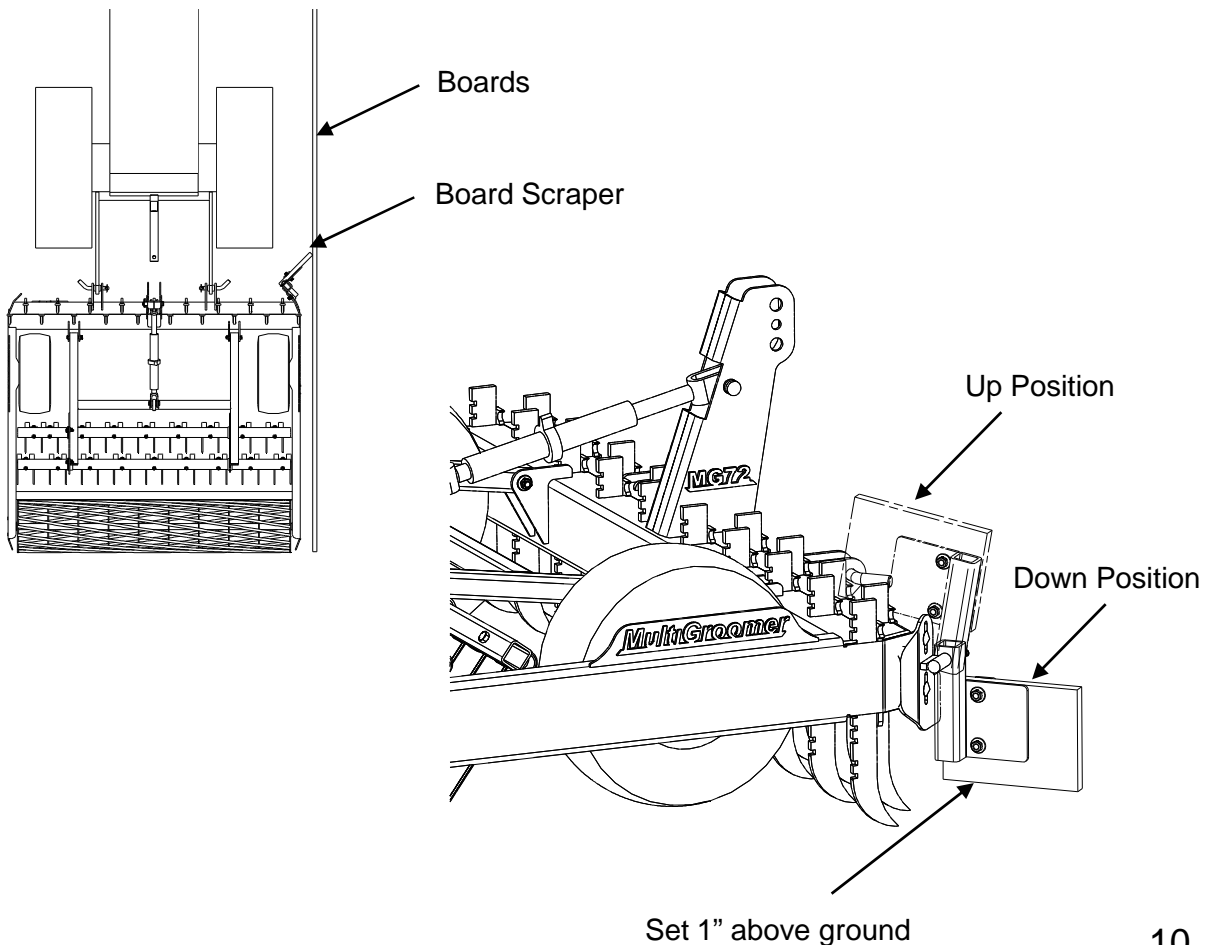
The Tow Attachment is needed if 3PTH is not available, example ATV's, Utility vehicles, or tractors without 3PTH. The tow attachment connects directly to the MultiGroomer. For operation, adjust jack or cylinder so that both the wheels and the roller is touching the ground. See Fig. 1. There are 2 positions to transport with the Tow Attachment. Fig. 2 is to move MultiGroomer short distance such as from arena to storage area. This way you don't have to raise the ripper teeth. Fig. 3 is to transport on wheels. First extent jack or cylinder to position in Fig. 1 and raise the ripper teeth to up position. Then retract jack or cylinder until rear roller is lifted off of the ground.



Board Scraper

Overtime with riding and grooming, the surface material that you have in your riding area whether it's sand, dirt, or whatever surface material you have, it will push to the walls. This can easily be rectified with the MGBS Board Scraper. It is easily installed to the side of the Multigroomer with two $\frac{1}{2}$ " carriage bolts. It can easily be swung up and out of the way when not in use. It is made with heavy rubber so that it will not damage the boards.

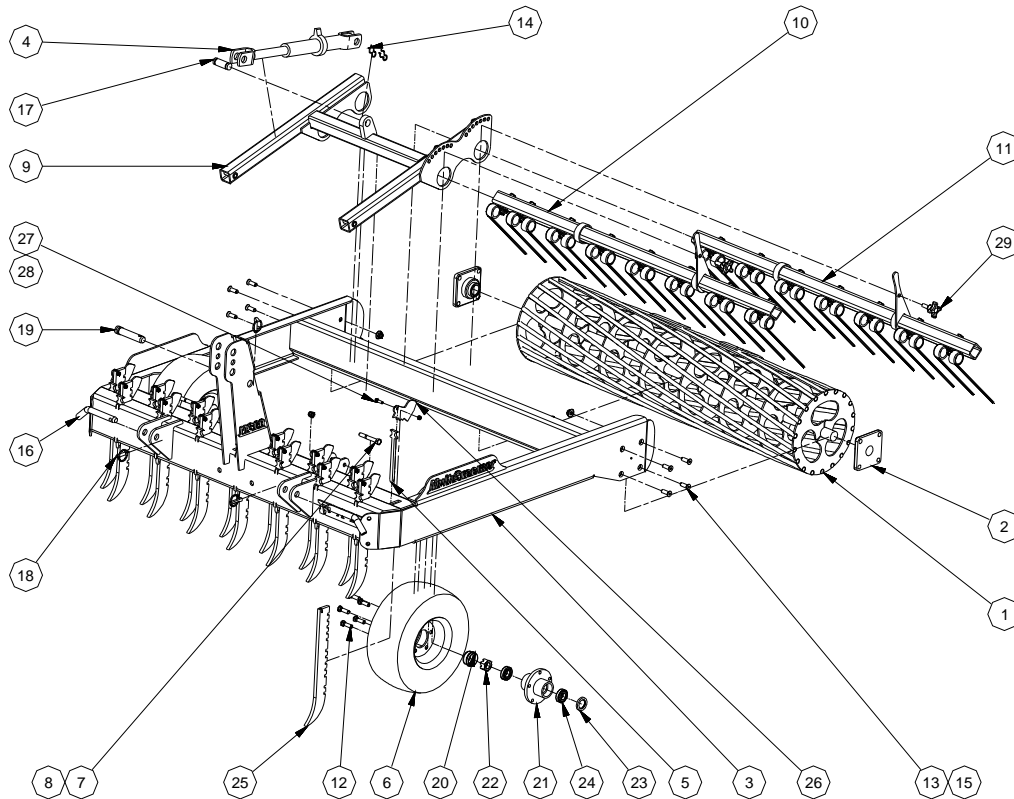
To set up the board scraper set the Multigroomer on the ground with the wheels and roller touching the ground. Then loosen the two bolts so that the board scraper can be moved up and down in the slots. In the down position the scraper should be 1" off the ground. Then tighten the bolts.



MutliGroomer Parts List



MG60



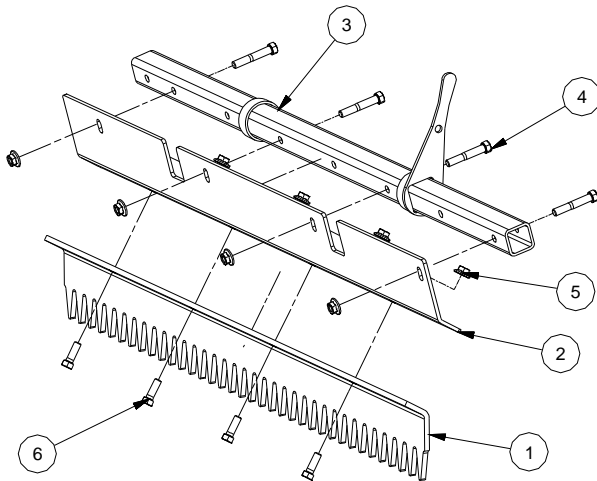
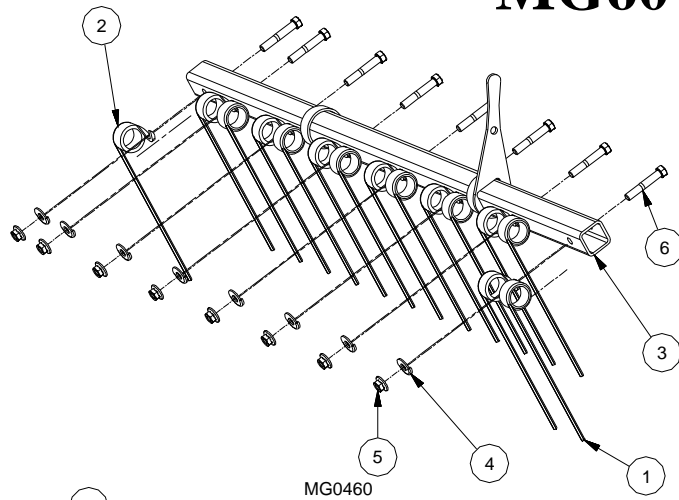
Parts List				Parts List			
ITEM	QTY	PART NUMBER	DESCRIPTION	ITEM	QTY	PART NUMBER	DESCRIPTION
1	1	R60	Roller (Inches Wide)	16	2	CAT1-784	Cat 1 Arm Pin
2	2	SAF208-24G	Bearing	17	1	637855	PIN
3	1	MGF60	Main Frame	18	3	385507	Lynch Pin
4	1	386501	Ratched Jack	19	1	387505	Pin
5	15	MG02	Tooth Lock	20	2	D-1000	Dust Cap
6	2	2020998	Wheel	21	2	H010005450	Hub
7	2	12312	Bolt	22	2	SJ-114	Slotted Hex Nut
8	2	12CLN	Lock Nut	23	2	CR523696	Seal
9	1	MG0360	Harrow Frame	24	4	L44643 \ L44610	Tapered Roller Bearing
10	1	MG0460	Harrow Bar Assembly Front	25	15	MG01	Ripper Tooth
11	1	MG0560	Rear Harrow Assembly	26	15	MG22	Tooth Locking Plate
12	10	500-20	Wheel bolt/Bolt	27	15	5161	Bolt
13	8	12112SHCS	Socket Head Cap Screw	28	15	516CLN	Lock Nut
14	2	637856	Hair Pin	29	2	135-052	Knob
15	10	12FSLN	Flange Nut				

MutliGroomer Parts List



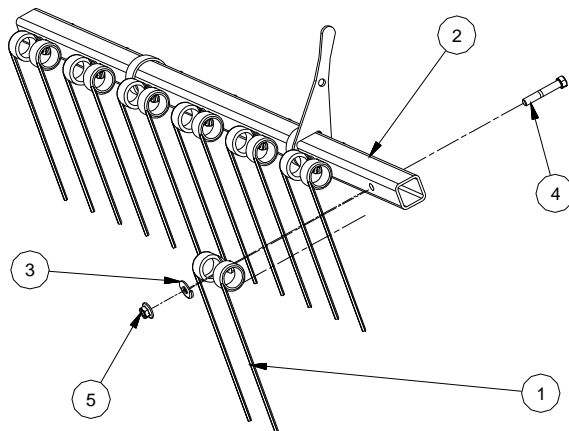
MG60

Parts List			
ITEM	QTY	PART NUMBER	DESCRIPTION
1	7	JD311	Tine
2	1	JD311L	Left Half Tine
3	1	MG0660	Bar Weldment Front
4	8	MG08	Formed Washer
5	8	12FSLN	Flange Nut
6	8	12*3	Bolt



Parts List			
ITEM	QTY	PART NUMBER	DESCRIPTION
1	1	MG0960	Leveling Blade
2	1	MG1060	Leveling Blade Base Plate
3	1	MG0660	Bar Weldment Front
4	4	12*3	Bolt
5	8	12FSLN	Flange Nut
6	4	12112	Bolt

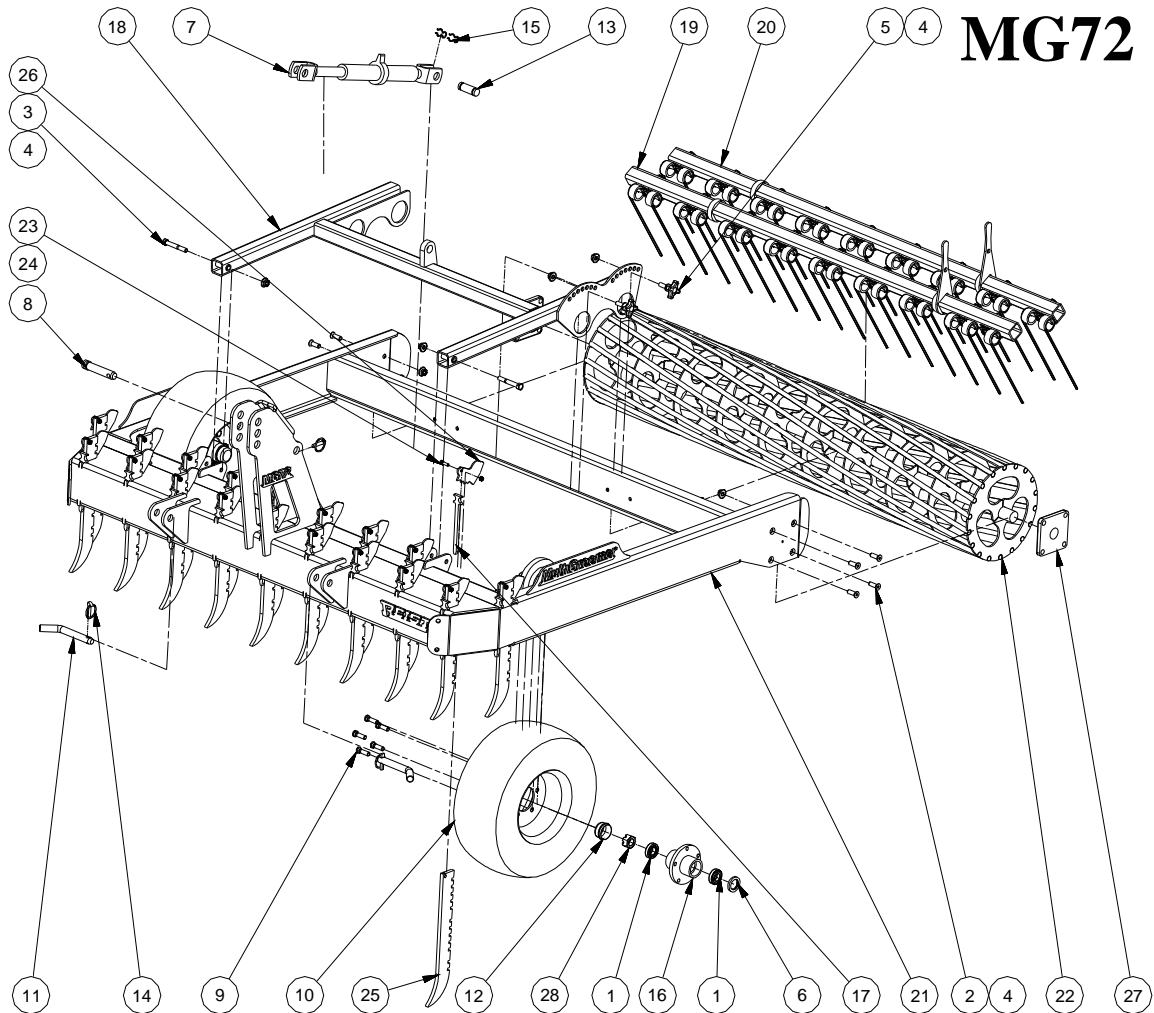
Parts List			
ITEM	QTY	PART NUMBER	DESCRIPTION
1	7	JD311	Tine
2	1	MG0760	Bar Weldment Rear
3	7	MG08	Formed Washer
4	7	12*3	Bolt
5	7	12FSLN	Flange Nut



MutliGroomer Parts List



MG72



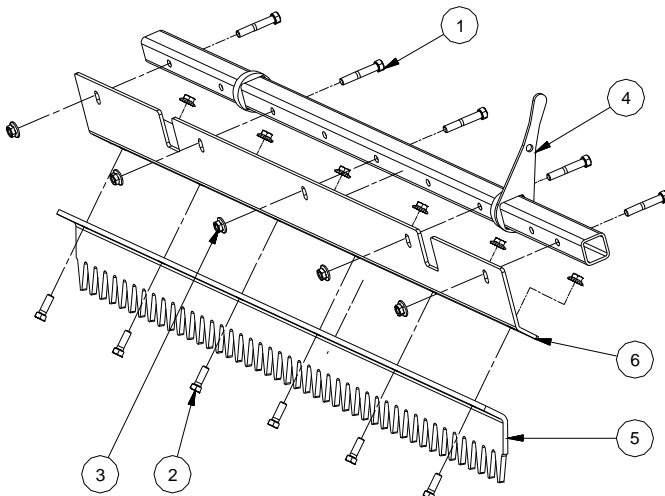
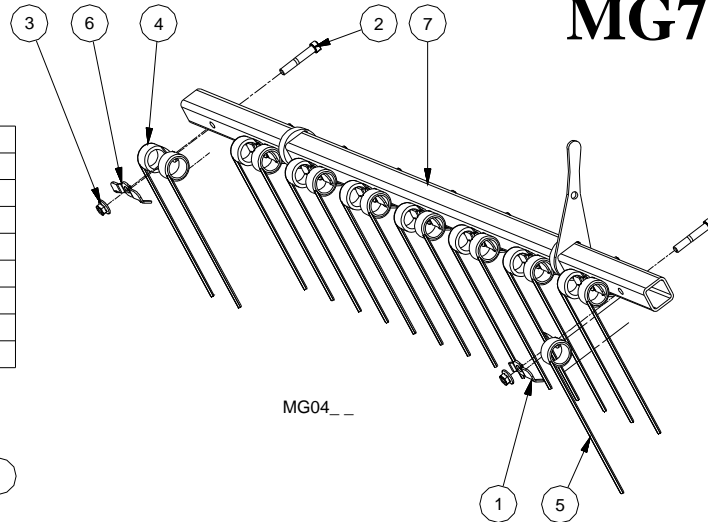
Parts List				Parts List			
ITEM	QTY	PART NUMBER	DESCRIPTION	ITEM	QTY	PART NUMBER	DESCRIPTION
1	4	L44643 / L44610	Tapered Roller Bearing	15	2	FXDBL	Hair Pin
2	8	12112FH	Flat Head Cap Screw	16	2	H010005450	Hub
3	2	12312	Bolt	17	19	MG02	Tooth Lock
4	12	12FSLN	Flange Nut	18	1	MG03_ _	Harrow Frame
5	2	135-052	Knob	19	1	MG04_ _	Harrow Bar Assembly Front
6	2	20124	SEAL	20	1	MG05_ _	Harrow Bar Assembly Rear
7	1	386501	Ratched Jack	21	1	MGF_ _	MutliGroomer Frame
8	1	387505	Pin	22	1	R_ _	Roller (Inches Wide)
9	10	500-20	Wheel bolt/Bolt	23	19	5161	Bolt
10	2	8074684	Wheel	24	19	516CLN	Lock Nut
11	2	CAT1-784	Cat 1 Arm Pin	25	19	MG01	Ripper Tooth
12	2	D-1000	Dust Cap	26	19	MG22	Tooth Locking Plate
13	1	FX01542	Pin	27	2	SAF208-24G	Bearing
14	3	FX02698	Lynch Pin	28	2	SJ-114	Slotted Hex Nut

MutliGroomer Parts List



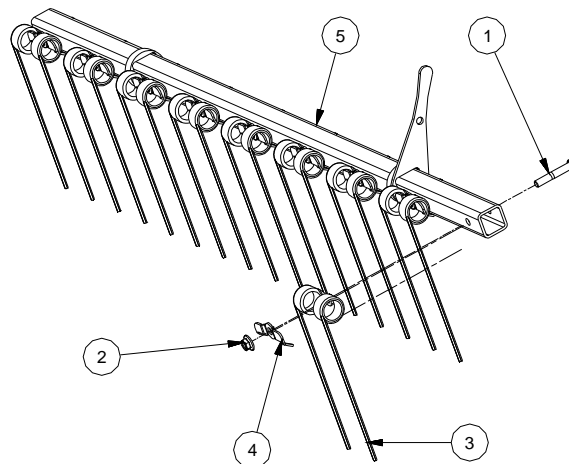
MG72

Parts List			
ITEM	QTY	PART NUMBER	DESCRIPTION
1	1	MG26	Tine Clip L
2	9	12*3	Bolt
3	9	12FSLN	Flange Nut
4	8	JD311	Tine
5	1	JD311L	Left Half Tine
6	8	MG 23	Tine Clip
7	1	MG06_ _	Bar Weldment Front



Parts List			
ITEM	QTY	PART NUMBER	DESCRIPTION
1	5	12*3	Bolt
2	6	12112	Bolt
3	11	12FSLN	Flange Nut
4	1	MG06_ _	Bar Weldment Front
5	1	MG09_ _	Grader Blade
6	1	MG10_ _	Leveling Blade Base Plate

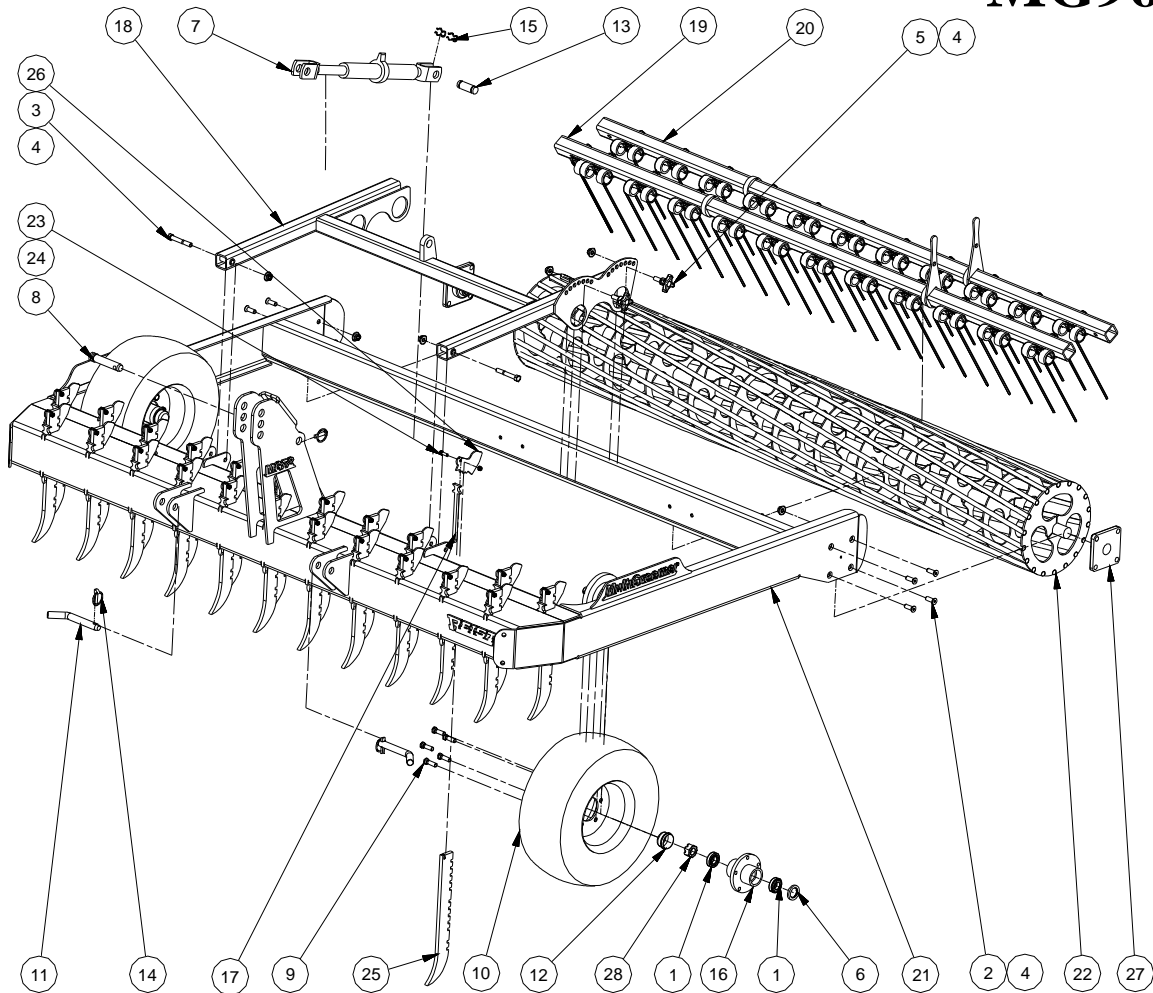
Parts List			
ITEM	QTY	PART NUMBER	DESCRIPTION
1	9	12*3	Bolt
2	9	12FSLN	Flange Nut
3	9	JD311	Tine
4	9	MG 23	Tine Clip
5	1	MG07_ _	Rear Bar Weldment



MutliGroomer Parts List



MG96



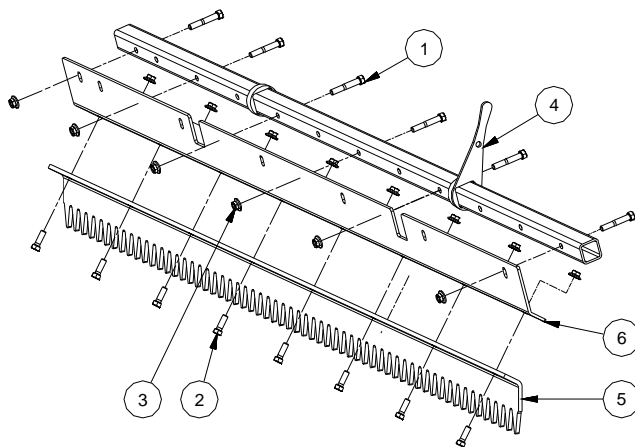
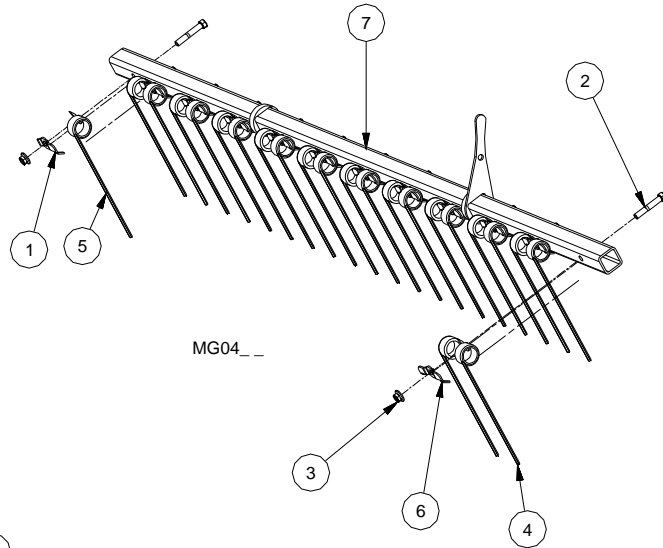
Parts List				Parts List			
ITEM	QTY	PART NUMBER	DESCRIPTION	ITEM	QTY	PART NUMBER	DESCRIPTION
1	4	L44643 / L44610	Tapered Roller Bearing	15	2	FXDBL	Hair Pin
2	8	12112FH	Flat Head Cap Screw	16	2	H010005450	Hub
3	2	12312	Bolt	17	23	MG02	Tooth Lock
4	12	12FSLN	Flange Nut	18	1	MG03_ _	Harrow Frame
5	2	135-052	Knob	19	1	MG04_ _	Harrow Bar Assembly Front
6	2	20124	SEAL	20	1	MG05_ _	Harrow Bar Assembly Rear
7	1	386501	Ratched Jack	21	1	MGF_ _	MultiGroomer Frame
8	1	387505	Pin	22	1	R_ _	Roller (Inches Wide)
9	10	500-20	Wheel bolt/Bolt	23	23	5161	Bolt
10	2	8074684	Wheel	24	23	516CLN	Lock Nut
11	2	CAT1-784	Cat 1 Arm Pin	25	23	MG01	Ripper Tooth
12	2	D-1000	Dust Cap	26	23	MG22	Tooth Locking Plate
13	1	FX01542	Pin	27	2	SAF208-24G	Bearing
14	3	FX02698	Lynch Pin	28	2	SJ-114	Slotted Hex Nut

MutliGroomer Parts List



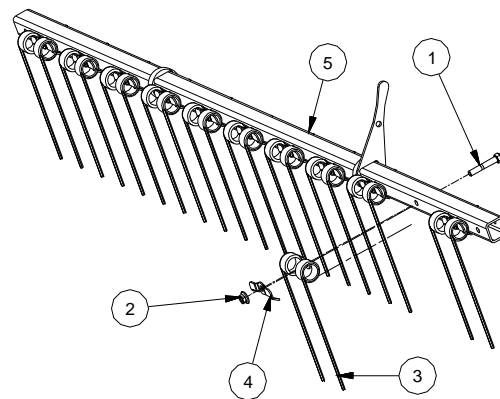
MG96

Parts List			
ITEM	QTY	PART NUMBER	DESCRIPTION
1	1	MG26	Tine Clip L
2	12	12*3	Bolt
3	12	12FSLN	Flange Nut
4	11	JD311	Tine
5	1	JD311L	Left Half Tine
6	11	MG 23	Tine Clip
7	1	MG06_ _	Bar Weldment Front



Parts List			
ITEM	QTY	PART NUMBER	DESCRIPTION
1	6	12*3	Bolt
2	8	12112	Bolt
3	14	12FSLN	Flange Nut
4	1	MG06_ _	Bar Weldment Front
5	1	MG09_ _	Grader Blade
6	1	MG10_ _	Leveling Blade Base Plate

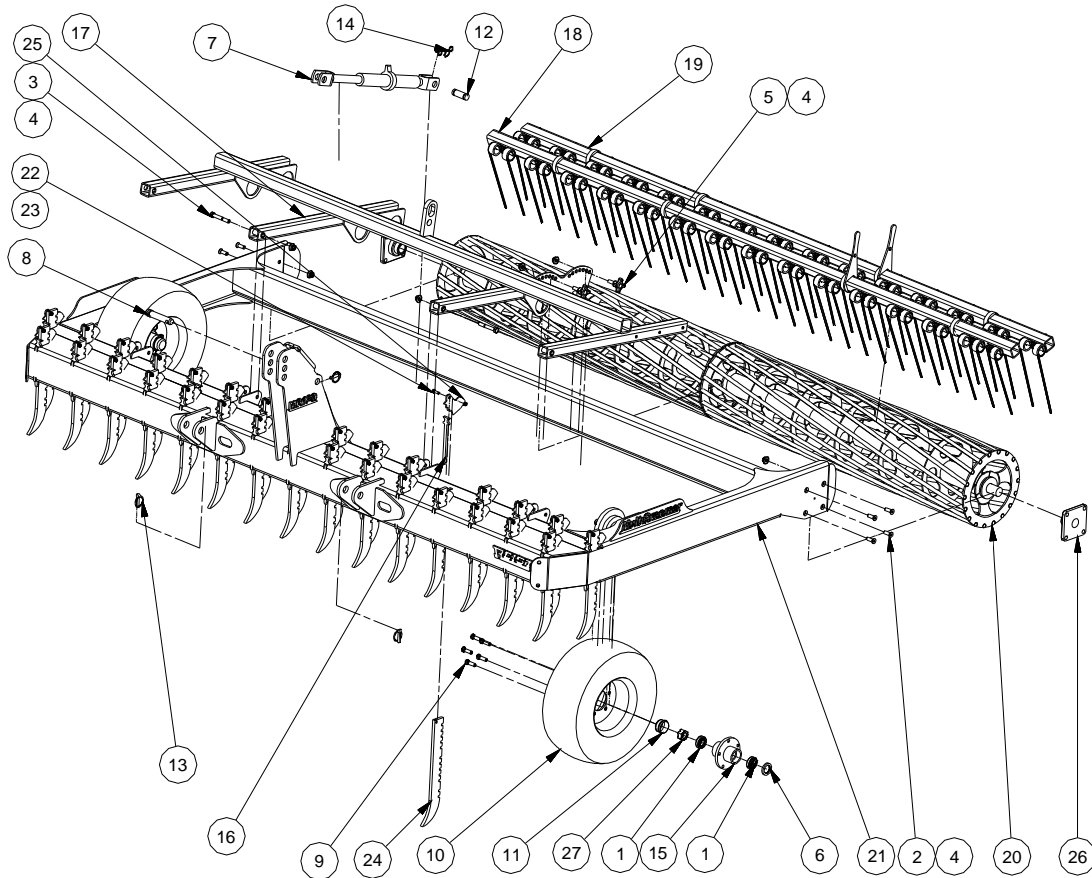
Parts List			
ITEM	QTY	PART NUMBER	DESCRIPTION
1	11	12*3	Bolt
2	11	12FSLN	Flange Nut
3	11	JD311	Tine
4	11	MG 23	Tine Clip
5	1	MG07_ _	Rear Bar Weldment



MutliGroomer Parts List



MG120



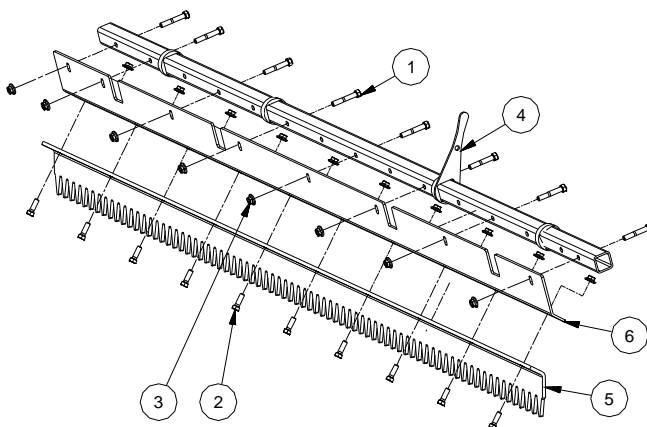
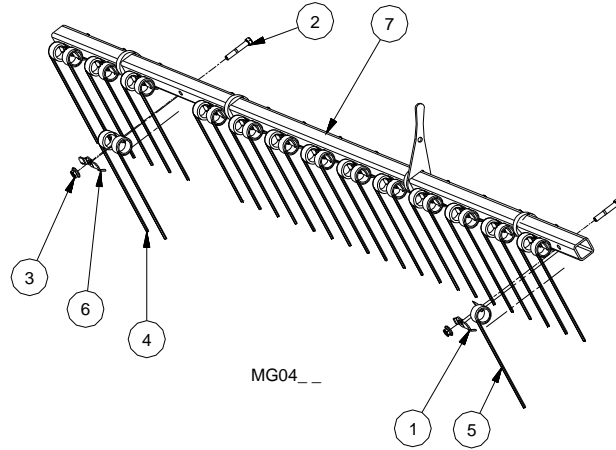
Parts List				Parts List			
ITEM	QTY	PART NUMBER	DESCRIPTION	ITEM	QTY	PART NUMBER	DESCRIPTION
1	4	L44643 / L44610	Tapered Roller Bearing	15	2	H010005450	Hub
2	8	12112FH	Flat Head Cap Screw	16	31	MG02	Tooth Lock
3	2	12312	Bolt	17	1	MG03_ _	Harrow Frame
4	12	12FSLN	Flange Nut	18	1	MG04_ _	Harrow Bar Assembly Front
5	2	135-052	Knob	19	1	MG05_ _	Harrow Bar Assembly Rear
6	2	20124	SEAL	20	1	MG36120	Split Rolling Harrow
7	1	386501	Ratched Jack	21	1	MGF_ _	MultiGroomer Frame
8	1	387505	Pin	22	31	5161	Bolt
9	10	500-20	Wheel bolt/Bolt	23	31	516CLN	Lock Nut
10	2	8074684	Wheel	24	31	MG01	Ripper Tooth
11	2	D-1000	Dust Cap	25	31	MG22	Tooth Locking Plate
12	1	FX01542	Pin	26	2	SAF208-24G	Bearing
13	3	FX02698	Lynch Pin	27	2	SJ-114	Slotted Hex Nut
14	2	FXDBL	Hair Pin				

MutliGroomer Parts List



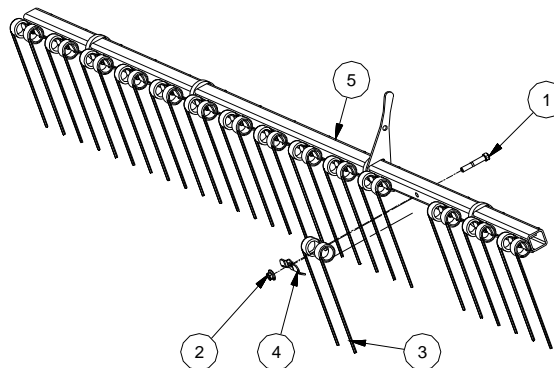
MG120

Parts List			
ITEM	QTY	PART NUMBER	DESCRIPTION
1	1	MG26	Tine Clip L
2	15	12*3	Bolt
3	15	12FSLN	Flange Nut
4	14	JD311	Tine
5	1	JD311L	Left Half Tine
6	14	MG 23	Tine Clip
7	1	MG06_ _	Bar Weldment Front



Parts List			
ITEM	QTY	PART NUMBER	DESCRIPTION
1	8	12*3	Bolt
2	10	12112	Bolt
3	18	12FSLN	Flange Nut
4	1	MG06_ _	Bar Weldment Front
5	1	MG09_ _	Grader Blade
6	1	MG10_ _	Leveling Blade Base Plate

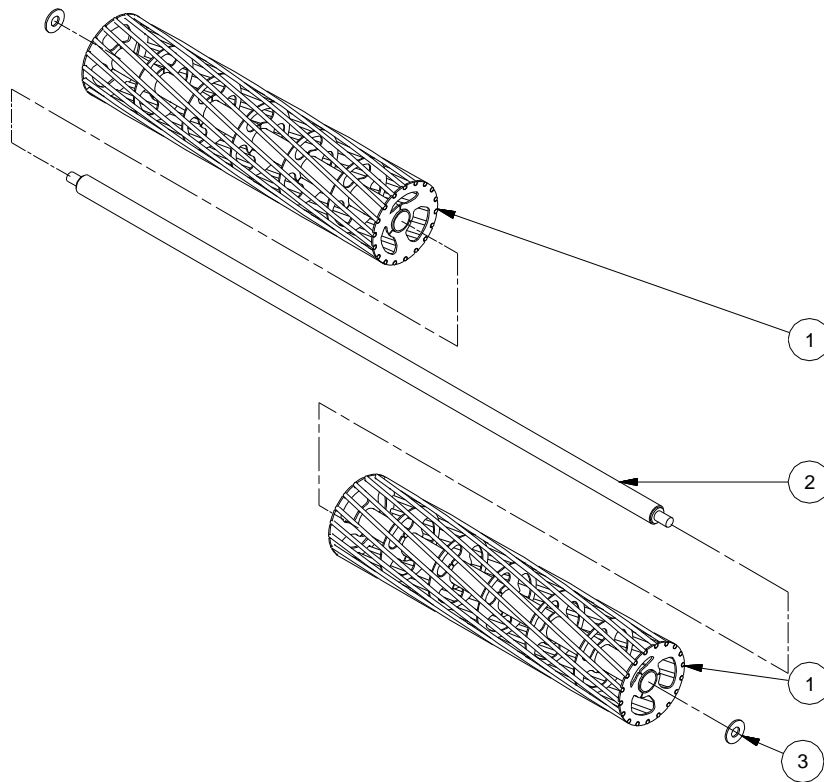
Parts List			
ITEM	QTY	PART NUMBER	DESCRIPTION
1	15	12*3	Bolt
2	15	12FSLN	Flange Nut
3	15	JD311	Tine
4	15	MG 23	Tine Clip
5	1	MG07_ _	Rear Bar Weldment



MutliGroomer Parts List

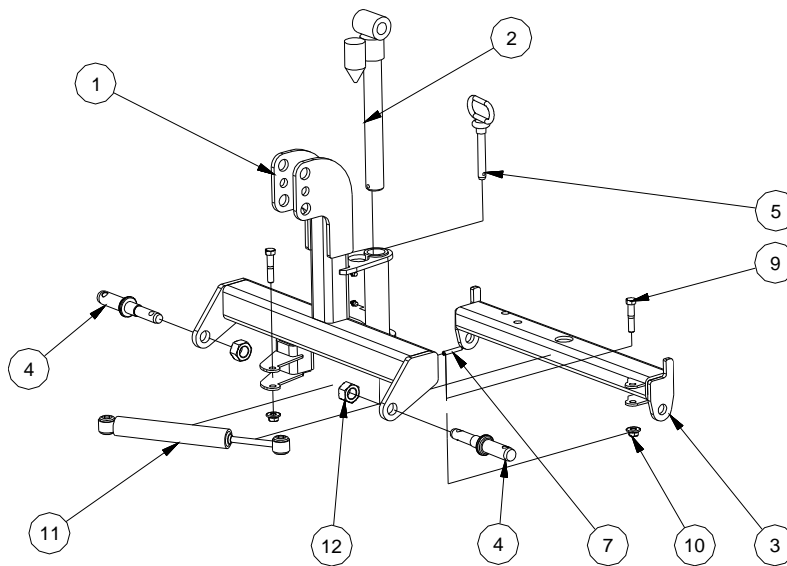


MG120



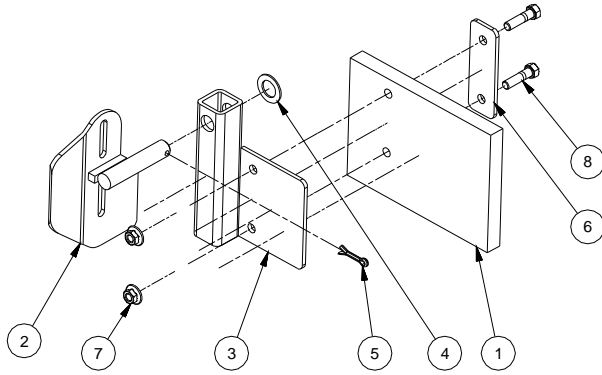
Parts List			
ITEM	QTY	PART NUMBER	DESCRIPTION
1	2	MG37120	Roller (Inches Wide)
2	1	MG38120	Split Roll Shaft
3	2	MG39	Split Roll Washer

Pivot Hitch Part# 3PHSWL



Parts List			
ITEM	QTY	PART NUMBER	DESCRIPTION
1	1	MG11	3PT Front Pivot
2	1	MG12	3PT Rear pivot B
3	1	MG13	3PT Rear pivot B
4	2	386010	Lift Arm Pin
5	1	385502	Draw Pin
7	1	516RP	Roll Pin
8	2	GF	Grease Zerk
9	2	12212	Bolt
10	2	12FSLN	Flange Nut
11	1	SS10317	Steering Stabilizer
12	2	1NF	Nut

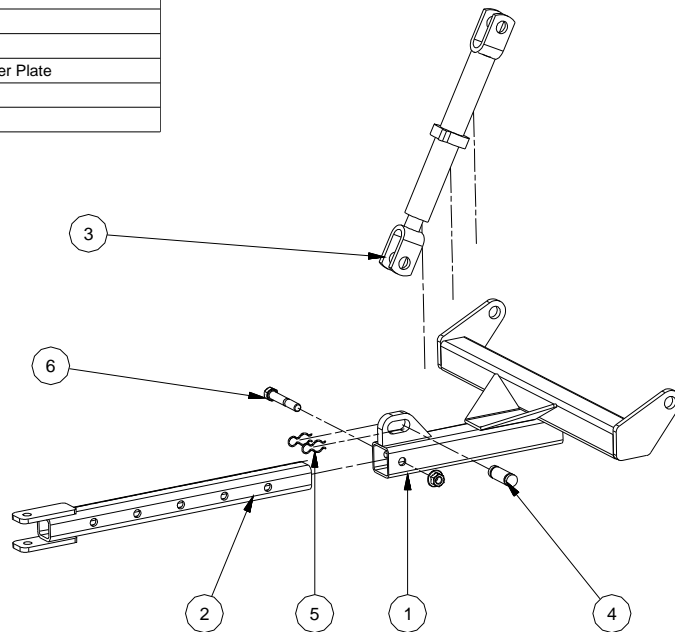
MutliGroomer Parts List



Board Scraper Part# MGBS

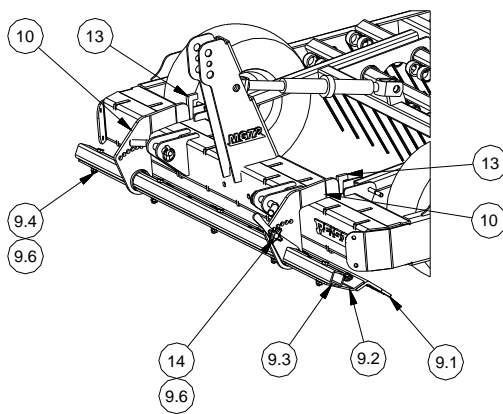
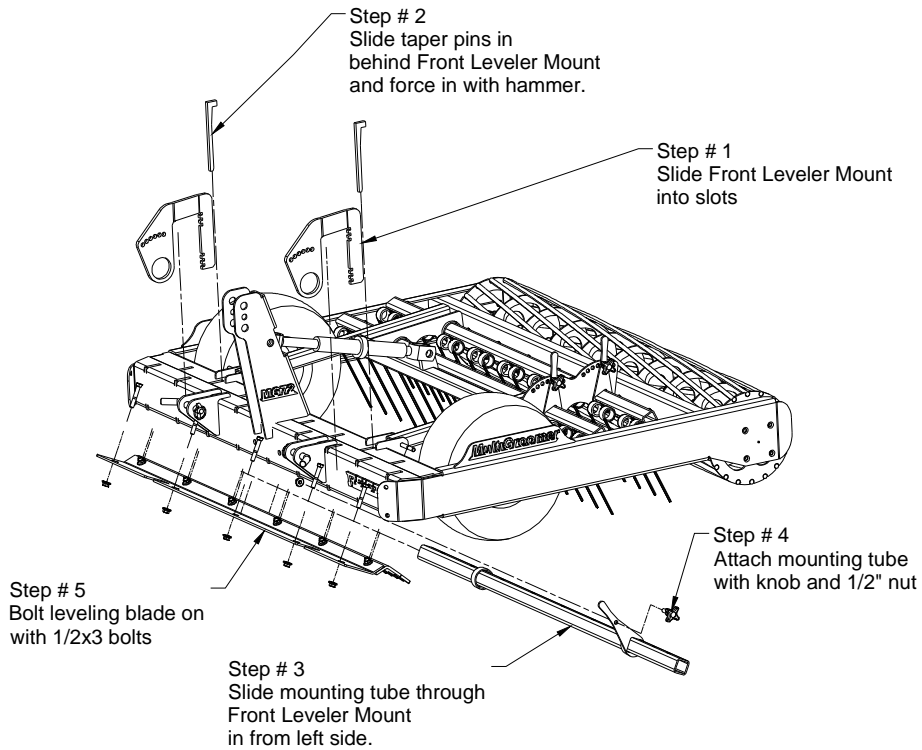
Parts List			
ITEM	QTY	PART NUMBER	DESCRIPTION
1	1	MG16	Rubber Scraper
2	1	MG17	Swing Base Mount
3	1	MG18	Swing Arm
4	1	1M	Washer
5	1	142CP	Cotter Pins
6	1	MG19	Metal Washer Plate
7	2	12FSLN	Flange Nut
8	2	12*2	Nut

Tow Hitch Part# MGTH



Parts List			
ITEM	QTY	PART NUMBER	DESCRIPTION
1	1	MG14	Tow Bar Weldment
2	1	MG15	Draw Bar
3	1	386501	Ratched Jack
4	1	637855	Pin
5	2	637856	Hair Pin
6	1	584	Bolt
7	1	58FSLN	Flange Nut

Front Leveling Blade Part#



Parts List			
ITEM	QTY	PART NUMBER	DESCRIPTION
9.1	1	MG09_ _	Grader Blade
9.2	1	MG10_ _	Leveling Blade Base Plate
9.3	1	MG06_ _	Bar Weldment Front
9.4	5	12*3	Bolt
9.6	11	12FSLN	Flange Nut
10	2	MG20	Front Leveler Mount
13	2	MG21	Leveler Taper Lock
14	1	135-052	Knob

WARRANTY



All new Reist machinery is warranted to be free from defects in material or workmanship, which may cause failure under normal usage and service when used for the purpose, intended, for a period of 12 months. This warranty applies only to a new Reist product, there being no warranty of any nature in respect to new products that have been modified or altered, repaired, neglected, or used in any way, which, in the opinion of Reist adversely affects its performance.

In the event of failure of a part or parts, and upon inspection, Reist is satisfied that failure is due to defective material or workmanship within 12 calendar months, from the date of delivery to an end user, such defective part or parts will be repaired or replaced by Reist at his business location. It is the responsibility of the buyer, at his expense, to transport the machine or equipment to the manufacturer service shop or, to an authorized service depot or, alternatively, to reimburse Reist for any travel or transportation expense involved in fulfilling this warranty.

When requested by Reist, part or parts shall be returned for inspection, transportation prepaid, to a place designated by Reist. **IN NO EVENT SHALL THE BUYER BE ENTITLED TO RECOVER FOR INCIDENTAL OR CONSEQUENTIAL DAMAGES, INCLUDING, BUT NOT LIMITED TO, LOSS OF PRODUCT, INCONVENIENCE, RENTAL OR REPLACEMENT EQUIPMENT, LOSS OF PROFIT, OR OTHER COMMERCIAL LOSS.**

This warranty becomes void and null if the equipment is modified, breaks down as the result of an accident, is not operated according to manufacturers recommendations, damaged by negligence or if maintenance has not been carried out as specified.

THIS WARRANTY IS NOT TRANSFERABLE

Proof of Purchase

Date of purchase (yyyy mm dd)		Model		Serial #	
Dealer purchased from		City		State or Province	Country
First Name		Last Name		Phone # (include area code)	
Address				State or Province	Country
City	Postal Code	Reist Industries Inc. 100 Union St. Elmira Ontario N3B 2Z2		519-669-1501	

Proof of Purchase

Date of purchase (yyyy mm dd)		Model		Serial #	
Dealer purchased from		City		State or Province	Country
First Name		Last Name		Phone # (include area code)	
Address				State or Province	Country
City	Postal Code	Reist Industries Inc. 100 Union St. Elmira Ontario N3B 2Z2		519-669-1501	

**Reist Industries Inc. Ont.
100 Union St., Elmira
Ontario, Canada, N3B 2Z2
www.reistindustries.com**