



# AERA SEEDER

## OPERATOR & PARTS MANUAL

Serial # starting at H1944 to H1955



# **TABLE OF CONTENTS**



ITEM	PAGE
INTRODUCTION	2
SAFETY	3
CALIBRATION	4
STANDARD ROLLER ASSEMBLY	5
DOUBLE ROLLER ASSEMBLY	6
KNIFING ROLLER ASSEMBLY	7
STORAGE	8
PARTS	9-17
WARRANTY	18-19

**CONGRATULATIONS!!**

Thank you for choosing the **Reist Area Seeder**. We feel confident that this equipment will meet your expectations in workmanship, reliability and performance.

This manual is to assist you with the safe operation of the Area Seeder.

**The Reist Area Seeder**

Is a versatile piece of equipment to assist you in various primary and over seeding needs.

**MODEL NO.** \_\_\_\_\_ **SERIAL NO.** \_\_\_\_\_.

**CAUTION !**

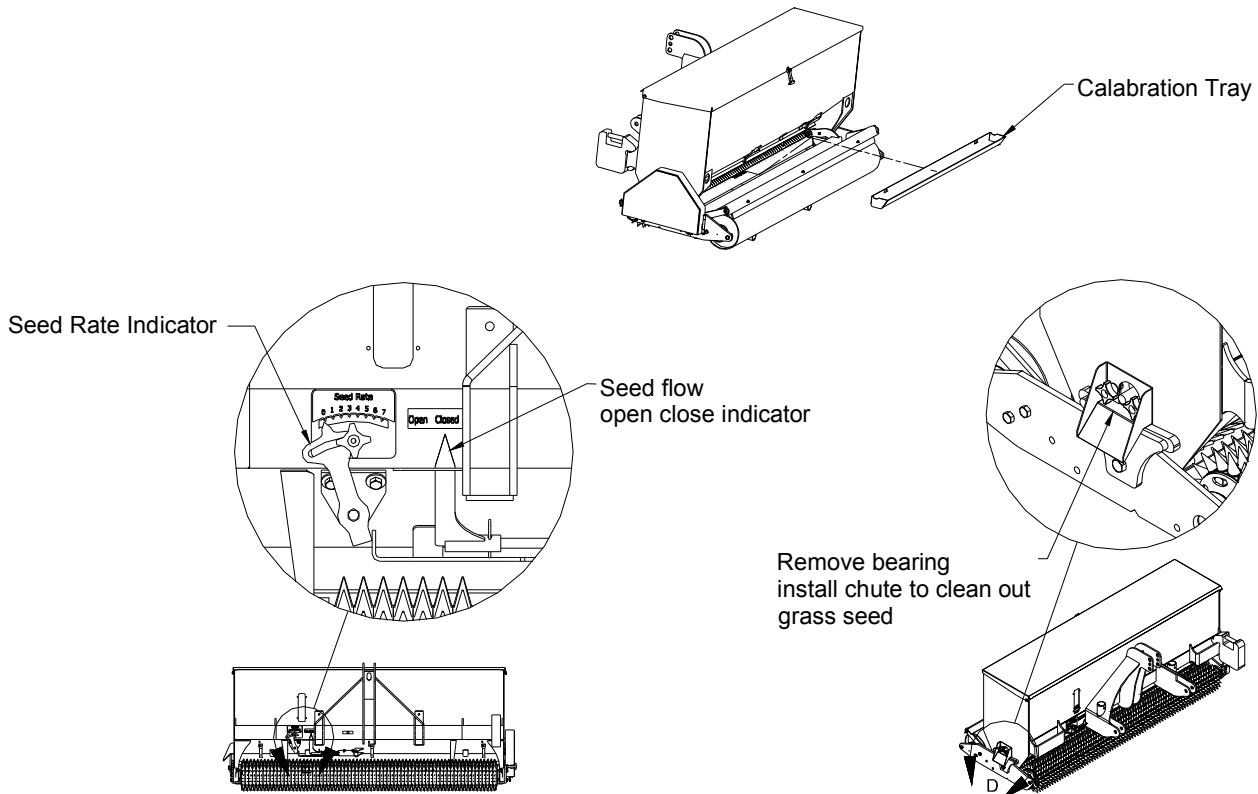
1. For proper safe operation we recommend that the tractor be equipped with an approved Roll-Over Protective Structure and Safety Belt.
2. Do not operate an engine in a confined or non-ventilated area.
3. Do not perform any adjustments or repairs with engine running.
4. Always lower 3 PT hitch to ground before performing adjustments or repairs.
5. Do not operate on excessive incline and always be careful when turning on slopes.
6. Never carry passengers on implement or tractor.
7. Never let a child operate machinery.
8. Hydraulic fluid under pressure can cause serious injury. Do Not use your hands to locate leaks.
9. It is the owner's responsibility to make sure that all operators read this manual before operating the equipment.

## Calibrating Seed Flow

To calibrate the seed flow rate, you need a weigh scale and small container.

1. Pour seed into seed box. (Each kind of seed needs to be calibrated separately).
2. Insert calibration tray in bottom of seeder on mounts.
3. Set Seed Rate Indicator to an approximate seed rate .
4. With seed flow open, drive the distance of 100 feet. (drive at the same speed as what you are going to drive when seeding).
5. Weigh seed in the calibration tray and multiply by 2. This equals pounds per thousand feet.

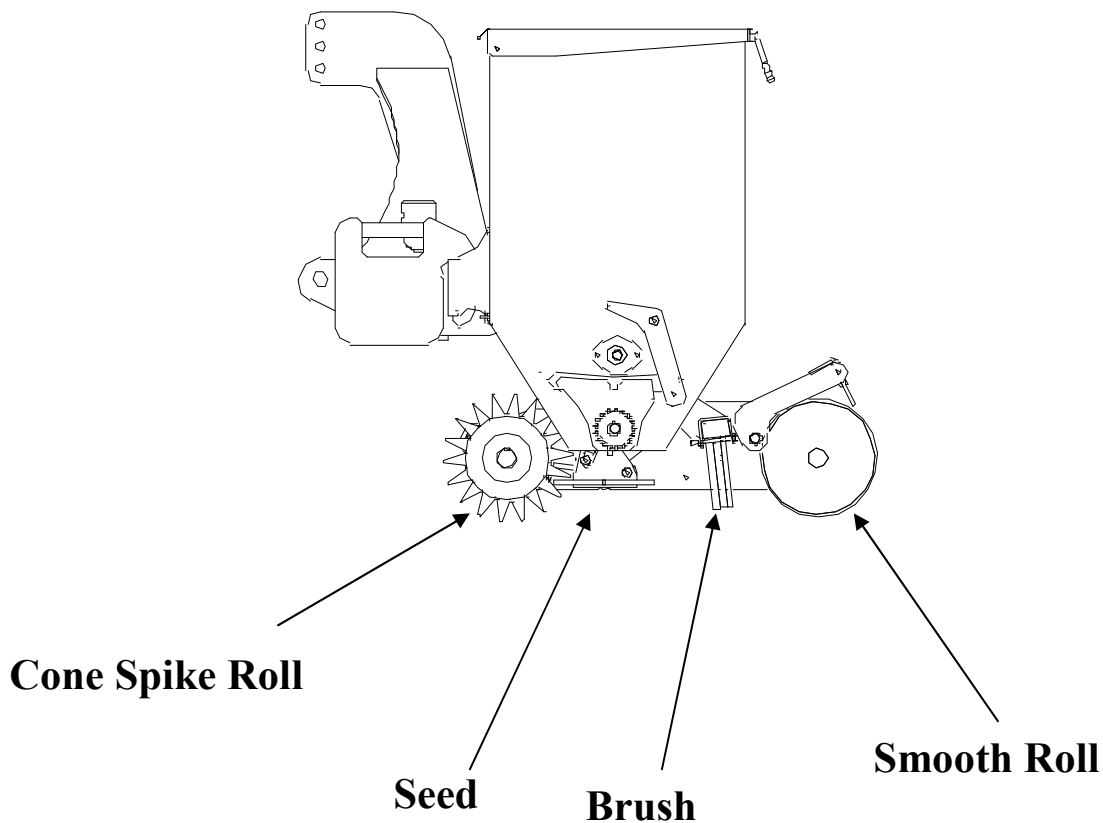
Example: 4lb x 2 = 8lb per thousand square ft.



## Standard Roller Assembly



### Standard

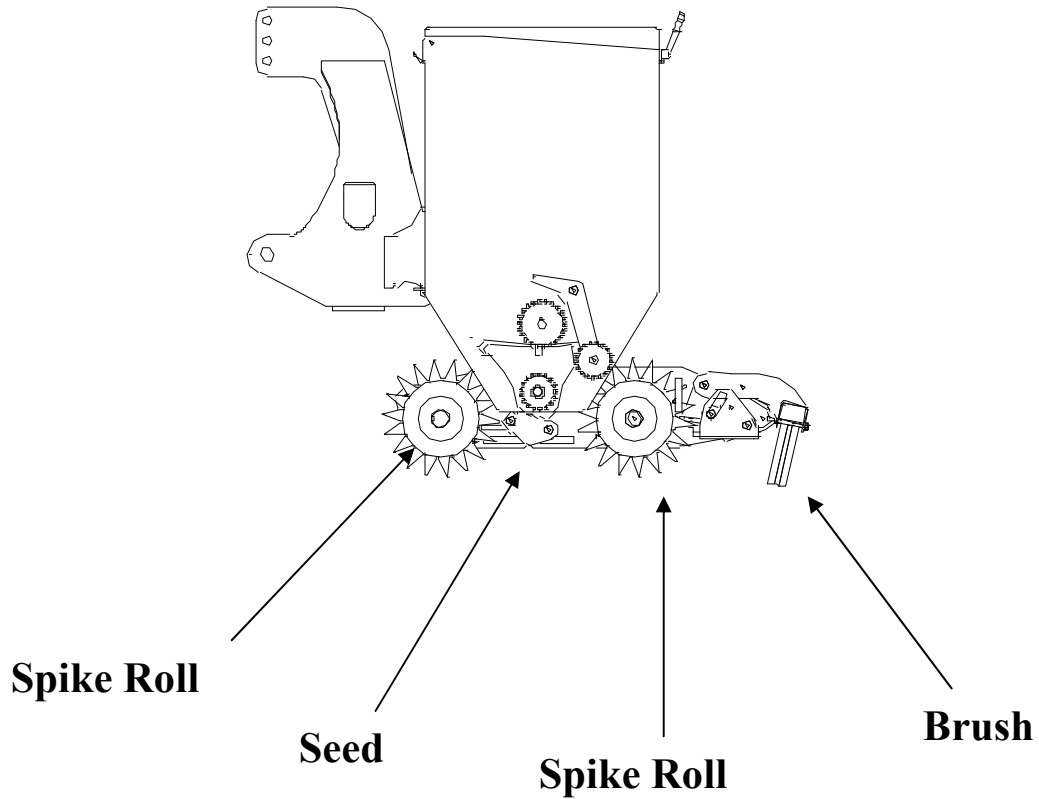


#### *Great for primary and over seeding*

For primary seeding, the spike roll breaks up clumps and packs the ground. The seed is then dropped by the seeder and the brush lightly covers the seed. The smooth roll presses the soil to keep the moisture in the ground.

For over seeding the spiked roll pokes small holes into the ground. to moisture, The seed that falls onto the grass is brushed into the holes created by the spike roller. The smooth roll presses down to cover the seed and keep the moisture in.

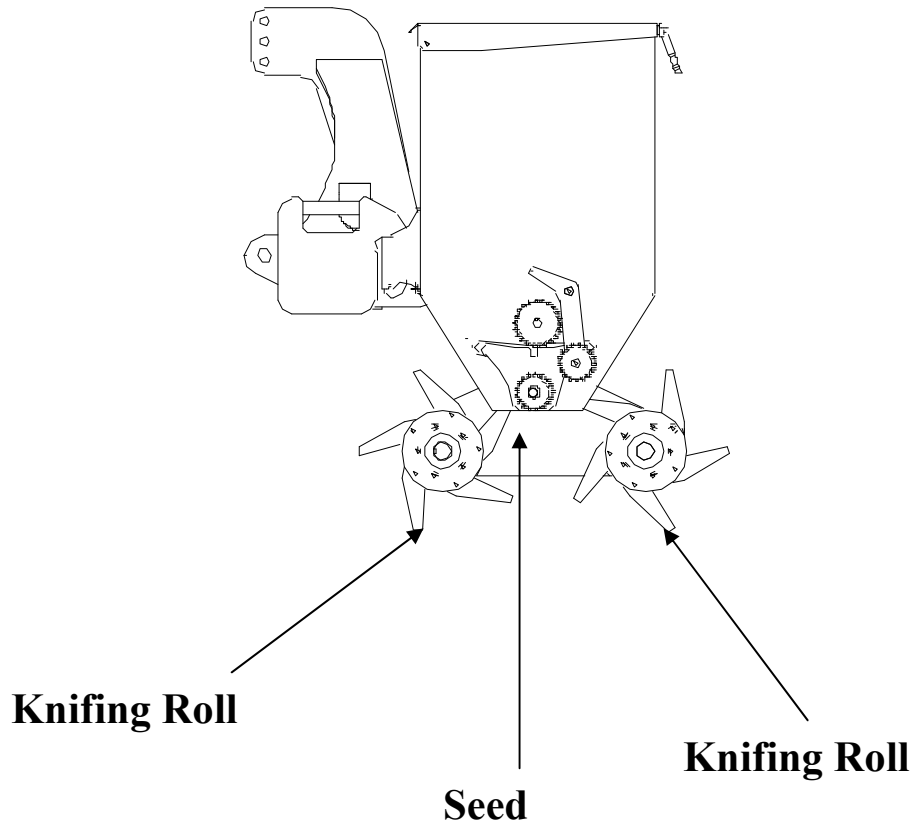
## Double Spike Rolls (Optional)



### *Double the Number of Holes*

Over seeding with two spiked rolls has twice the number of holes than the standard roller assembly. Both rolls poke small holes into the ground. Seed that falls onto the grass is brushed into the small holes created by the spike rolls.

# Knifing Rolls (Optional)



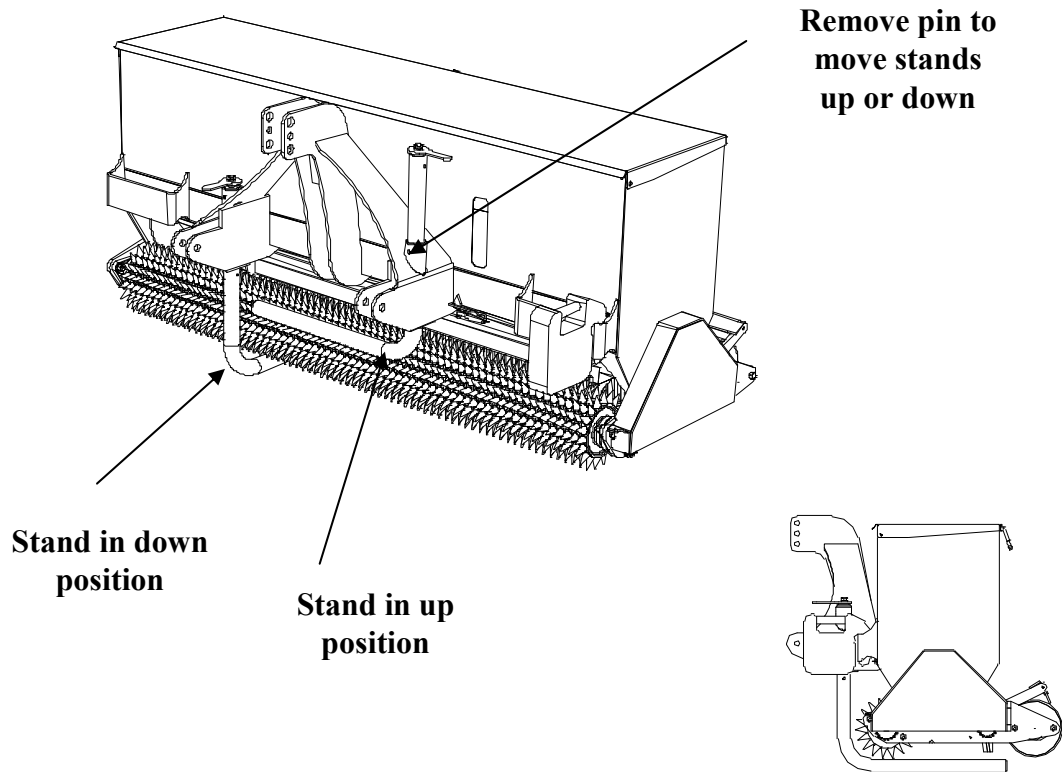
## *Knifing Rolls*

With the Knifing Rolls the knives slice into the ground doing a number of things. It aerates, thatches, loosens and brings up dead grass and other growth between the grass and soil. It slices the roots which causes the grass to grow thicker.

# Storage

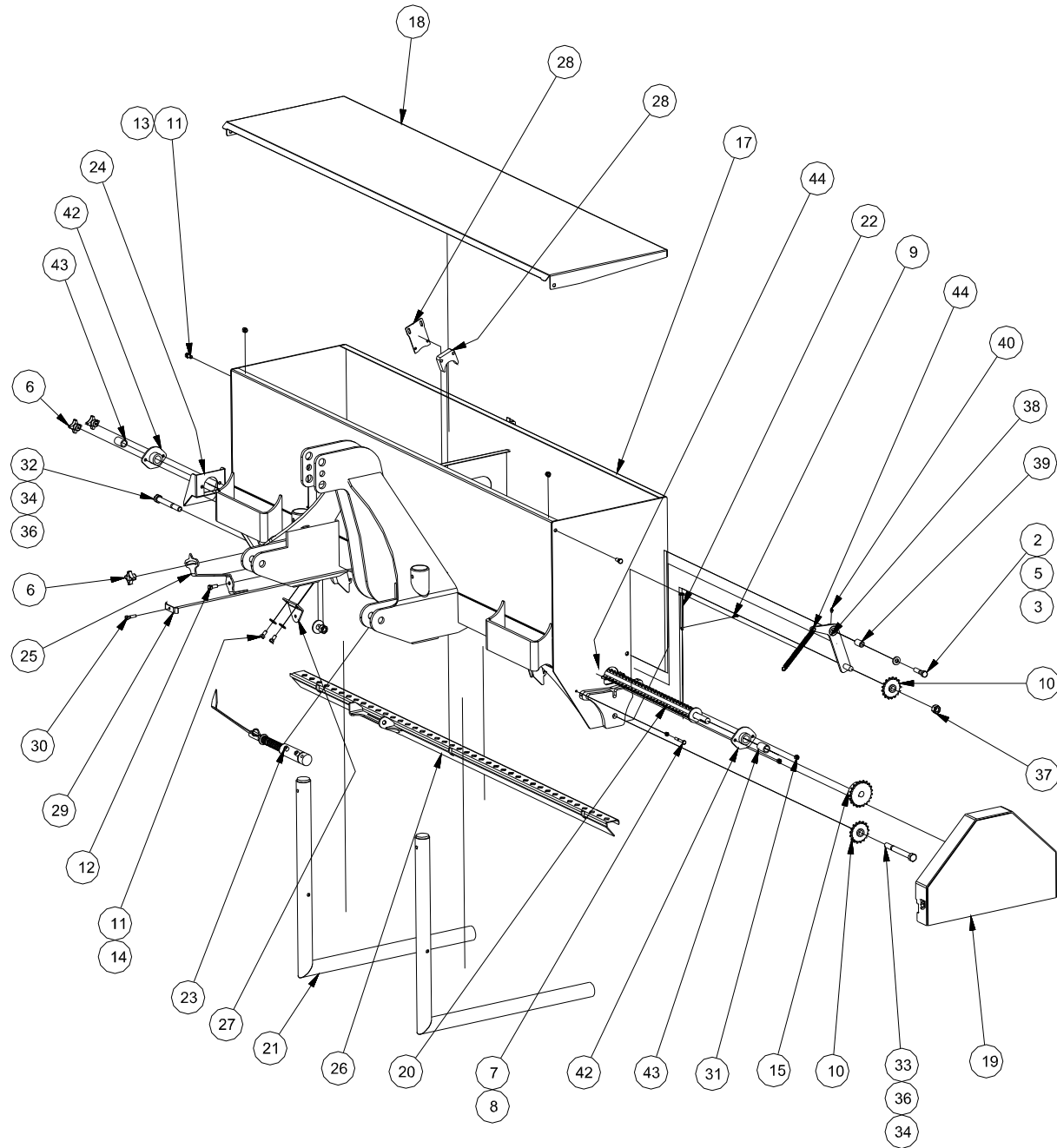


1. Store in dry ventilated area.
2. Set on stands by lowering stands as pictures below.
3. Store any hydraulic cylinder piston rods in retracted position.
4. Clean before putting into storage.
5. Touch-up paint as needed.
6. Oil seeder chain



# PARTS

# Aera Seeder Frame



# PARTS List



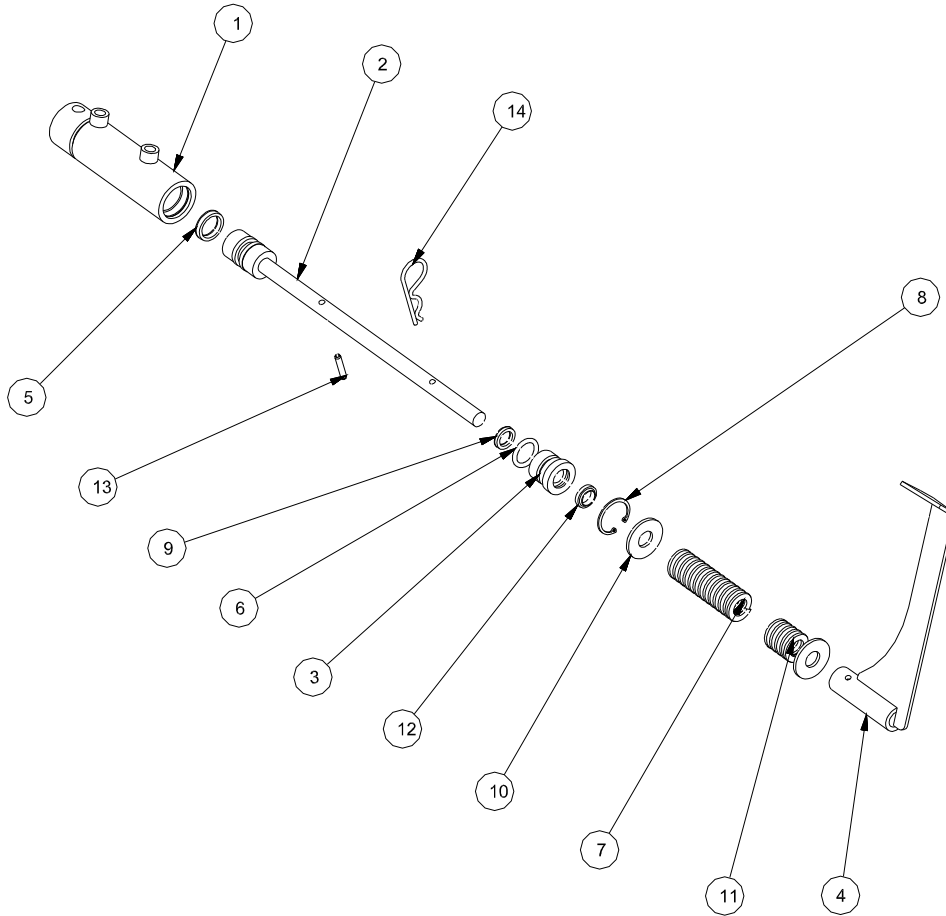
Part numbers with spaces, enter width of Aera Seeder in inches.

Example: 5027\_\_

Enter as:502772

Parts List			
ITEM	QTY	PART NUMBER	DESCRIPTION
1	2	12*2	1/2x2 NC Bolt
2	1	12*2	Bolt
3	1	12FL	Washer
4	2	12N	1/2 NC Nut
5	1	12N	Nut
6	3	134-022	Knob
7	1	142	1/4x2 NC Bolt
8	2	14N	1/4 NC Nut
9	1	1812CP	1/8 Cotter Pin
10	2	20401708	Idler Sprocket
11	4	38*1	Bolt
12	1	381	Bolt
13	3	38CLN	3/8 NC Lock Nut
14	2	38F	Washer
15	1	40B21-3/4	Sprocket
16	1	40RC	Drive Chain (not shown)
17	1	5002__	Aera Seeder Frame
18	1	5003__	Aera Seeder Lid
19	1	5007	Shield
20	1	5009__	Agitater Shaft
21	2	5010	Stand
22	1	5013	Shield Hinge Pin
23	1	5027	Cylinder Assembly
24	2	5056	Grass Seed Chute
25	1	5057	Rate Lever
26	1	5058	Slider Weldment
27	1	5059	Rate Lever bolted Mount
28	2	5060	*Varies*
29	1	5062	Hose Clip
30	1	516*2	Bolt
31	2	516N	Nut
32	1	585	5/8x5 NC Bolt
33	1	586	5/8x6 NC bolt
34	2	58F	5/8 Flat Washer
35	2	58FW	5/8 Flat Washer
36	2	58N	58 NC Nut
37	1	58N	Nut
38	1	5004	Tightener Arm
39	1	5005	Tightener Bushing
40	1	MFG	Grease Zerk
41	3	SH-9	Tarp Strap
42	2	5006	Seeder Brg Bracket
43	2	B1216-12	Oilite Bushing
44	1	TE1588-203-1016	Chain Tensioner

# PARTS Cylinder

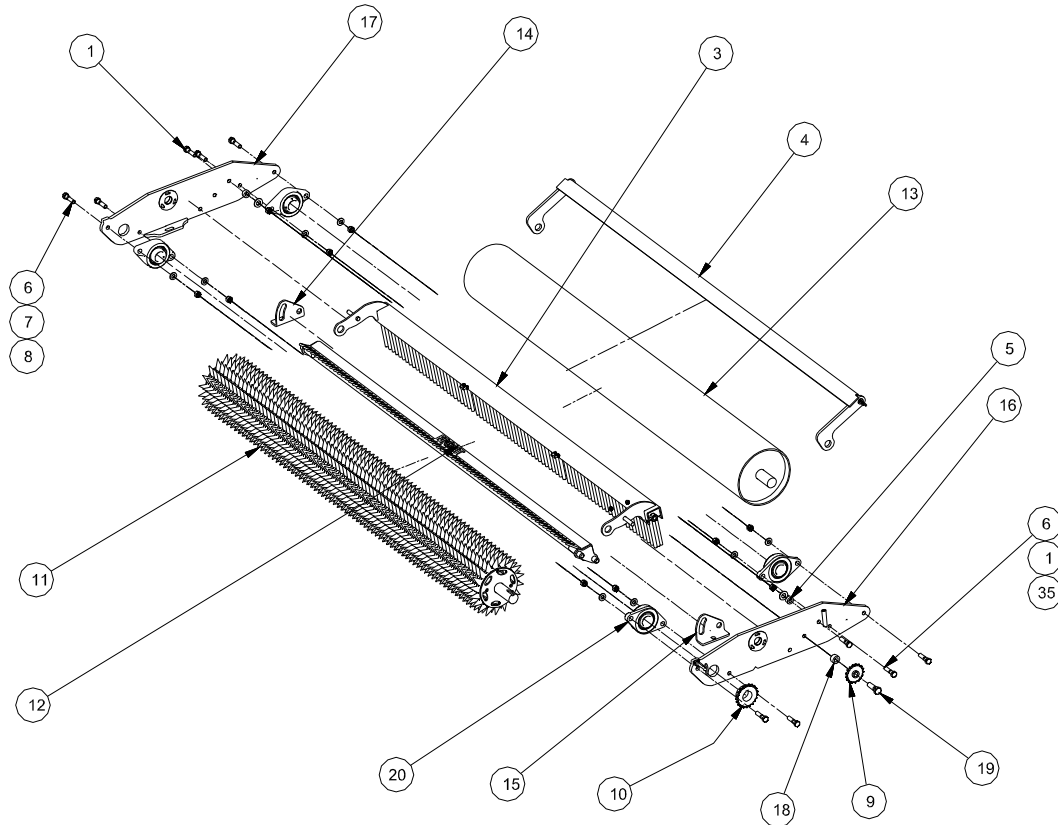


Part numbers with spaces, enter width of Aera Seeder in inches.  
 Example: 5027\_\_  
 Enter as:502772

Parts List			
ITEM	QTY	PART NUMBER	DESCRIPTION
6	1	210	O'RING INCH
1	1	5042	Cylinder Tube
2	1	5044	Stem & Piston
3	1	5045	Gland
4	1	5046	Open Shut Indicator
8	1	N5000-106	Internal Snap Ring
7	1	M-17	Long Compression Spring
5	1	U12-0.75-18B	Polly Pack
9	1	U12-0.50-SQB	Polly Pack
10	2	12FL	Washer
11	1	M-12	Short Compression Spring
12	1	ST-50	Wiper
13	1	33234CP	Cotter Pin
14	1	109-00060-0062	HAIRPIN

# PARTS

# Standard Roll Assembly



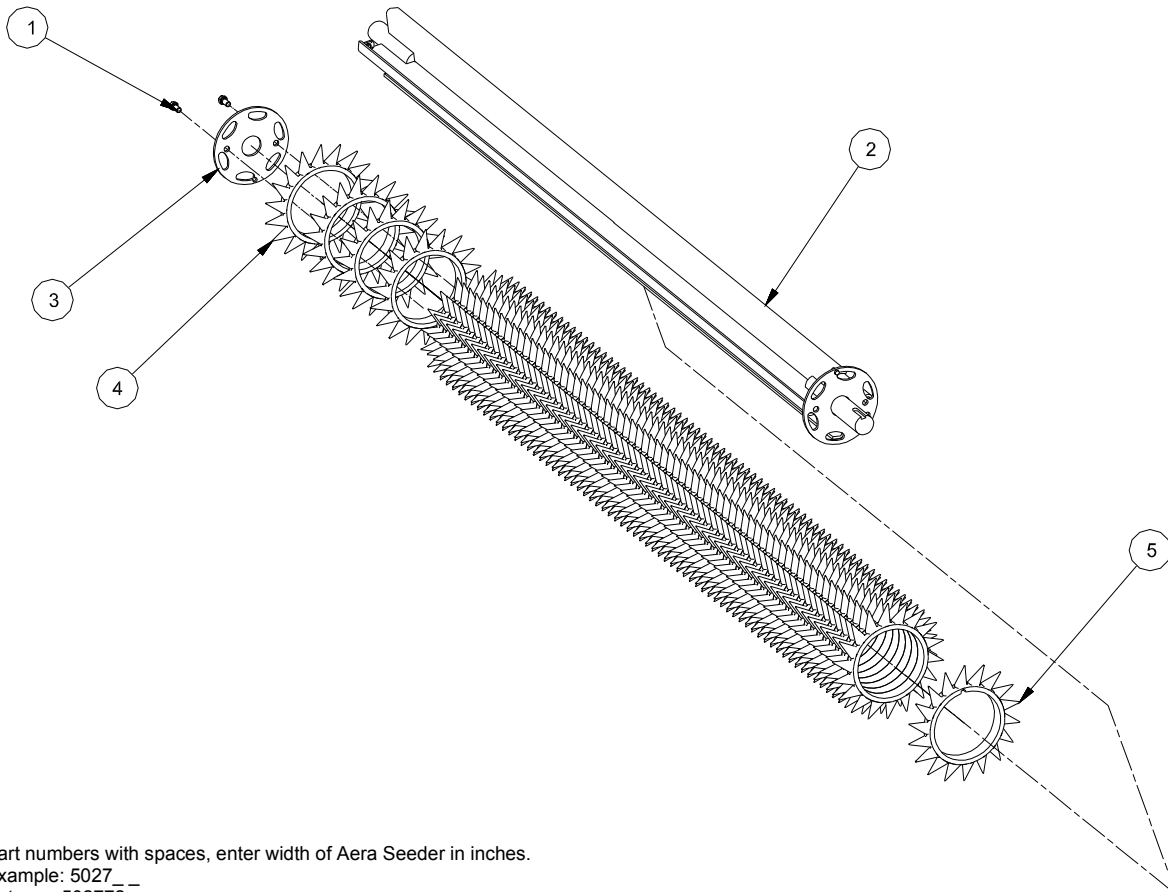
Part numbers with spaces, enter width of Aera Seeder in inches.  
 Example: 5027 \_\_  
 Enter as:502772

Parts List				Parts List			
ITEM	QTY	PART NUMBER	DESCRIPTION	ITEM	QTY	PART NUMBER	DESCRIPTION
1	2	12N	1/2 NC Nut	11	1	5014__	Spike Drive Roll
2	1	40RC	Drive Chain	12	1	5015__	Front Peg Scraper
3	1	5026__	Aera Seeder Brush	13	1	5016__	Smooth Roll
4	1	5027__	Smooth Roll Scraper	14	1	5019	Right Peg Scraper Hinge
5	2	5028	Scraper Bushing	15	1	5020	Peg Scraper Hinge Left
6	8	12*2	1/2x2 NC Bolt	16	1	5023	Side Plate Left S
7	8	12FW	1/2 Flat Washer	17	1	5024	Side Plate Right S
8	8	12N	1/2 NC Nut	18	1	5025	Idler Spacer
9	1	20401708	Idler Sprocket	19	1	58*2	5/8x2 NC bolt
10	1	40B21-1-1/2	Drive Sprocket	20	4	UCLF208108TC	1-1/2" bearing

# PARTS Spiked Drive Roll



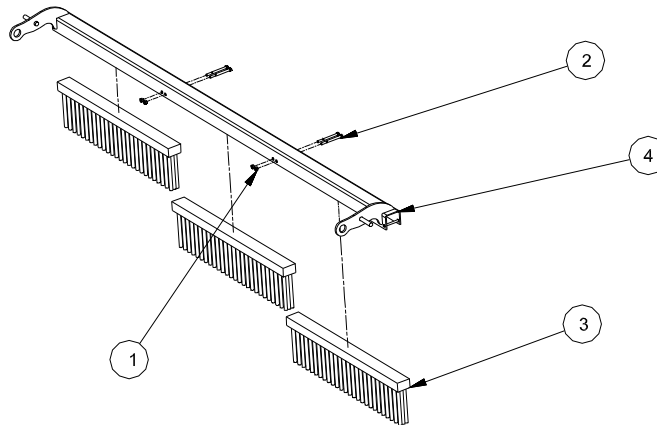
## Spiked Drive Roll



Part numbers with spaces, enter width of Aera Seeder in inches.  
 Example: 5027\_\_  
 Enter as:502772

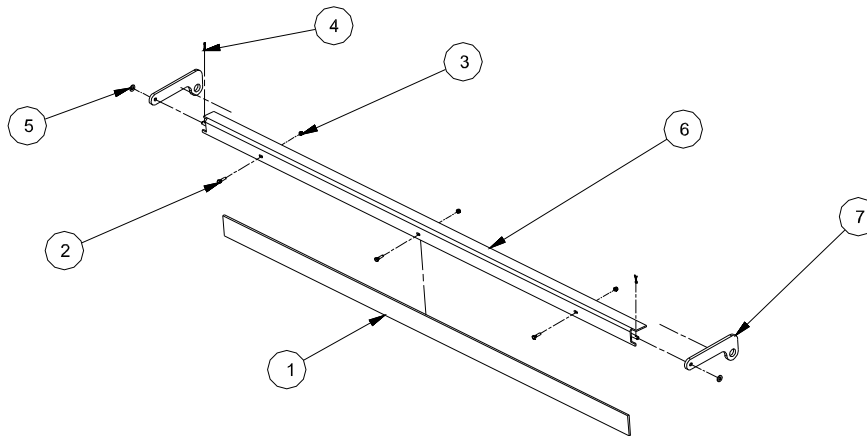
Parts List			
ITEM	QTY	PART NUMBER	DESCRIPTION
1	2	3834	Bolt
2	1	5064	Over Seeder Drive Roll
3	1	5065	Spike Washer
4	71	5066	Over Seeder Spike machined slanted
5	1	5067	Over Seeder Drive Spike Slanted

# PARTS Broom & Scraper



Part numbers with spaces, enter width of Aera Seeder in inches.  
 Example: 5027\_\_  
 Enter as:502772

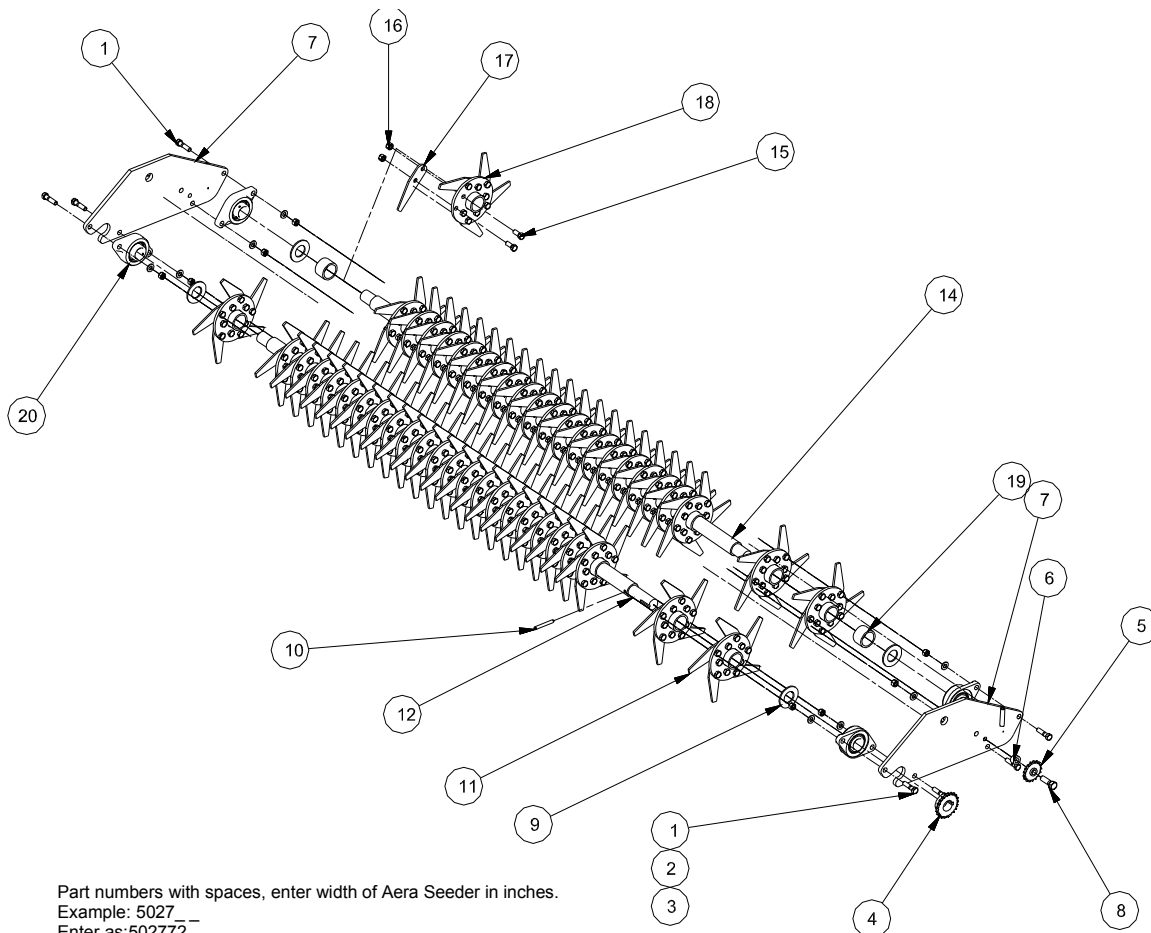
Parts List				
ITEM	QTY	PART NUMBER	DESCRIPTION	
1	4	14N	Hex Nut	
2	4	14*3	1/4x3 bolt	
3	3	2010	Main Frame Brush	
4	1	5039__	Aera Seeder Broom Mount	



Part numbers with spaces, enter width of Aera Seeder in inches.  
 Example: 5027\_\_  
 Enter as:502772

Parts List				
ITEM	QTY	PART NUMBER	DESCRIPTION	
1	1	1/4x3x__UHMW	UHMW Scraper	
2	3	14*1	1/4x1 NC Nut	
3	3	14CLN	1/4 Lock Nut	
4	2	1834CP	Cotter Pin	
5	2	38F	3/8 Flat Washer	
6	1	5040__	Smooth Roll Scraper Angle	
7	2	5041	Scraper Bracket	

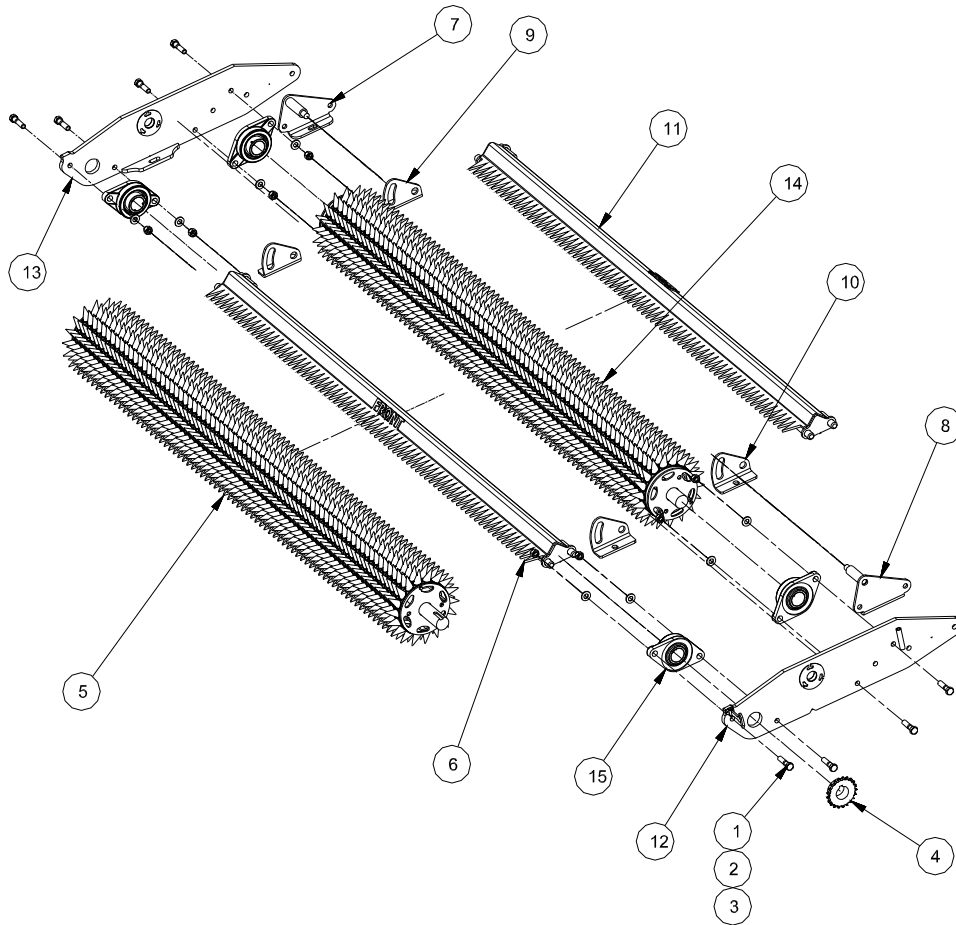
# PARTS Knifing Assembly



Part numbers with spaces, enter width of Aera Seeder in inches.  
 Example: 5027 \_ \_  
 Enter as:502772

Parts List			
ITEM	QTY	PART NUMBER	DESCRIPTION
1	8	12*2	Bolt
2	8	12FW	1/2 Flat Washer
3	8	12N	Nut
4	1	40B21-1-1/2	Drive Sprocket
5	1	4W20401708	Idler Sprocket
6	1	5025	Idler Spacer
7	2	5032	Knifing Side Plate
8	1	58*2	5/8x2 NC bolt
9	2	112F	1-1/2 Flat Washer
10	1	383RP	3/8x3 Roll Pin
11	47	5034	Slitter Assembly
12	1	5038 _ _	Slitter Drive shaft
13	2	112F	1-1/2 Flat Washer
14	1	5033 _ _	Slitter Idler Shaft
15	230	12114	1/2x1-1/4 NC Bolt
16	230	12N	Nut
17	115	5035	Slitter Knife
18	23	5036	Slitter Knife Mount
19	2	5037	Spacer Pipe
20	4	UCLF208108TC	1-1/2" bearing

# PARTS Double Spike Roll



Part numbers with spaces, enter width of Aera Seeder in inches.  
 Example: 5027 \_\_  
 Enter as:502772

Parts List			
ITEM	QTY	PART NUMBER	DESCRIPTION
1	8	12*2	1/2x2 NC Bolt
2	8	12FW	1/2 Flat Washer
3	8	12N	1/2 NC Nut
4	1	40B21-1-1/2	Drive Sprocket
5	1	5014 __	Spike Drive Roll
6	1	5015 __	Front Peg Scraper
7	1	5017	Rear Broom Bracket Right
8	1	5018	Rear Broom Bracket Left
9	2	5019	Right Peg Scraper Hinge
10	2	5020	Peg Scraper Hinge Left
11	1	5021 __	Peg Scraper Rear
12	1	5023	Side Plate Left S
13	1	5024	Side Plate Right S
14	1	5063 __	Spike Drive Roll
15	4	UCLF208108TC	1-1/2" bearing

# WARRANTY



All new Reist machinery is warranted to be free from defects in material or workmanship, which may cause failure under normal usage and service when used for the purpose, intended, for a period of 12 months.

This warranty applies only to a new Reist product, there being no warranty of any nature in respect to new products that have been modified or altered, repaired, neglected, or used in any way, which, in the opinion of Reist adversely affects its performance.

In the event of failure of a part or parts, and upon inspection, Reist is satisfied that failure is due to defective material or workmanship within 12 calendar months, from the date of delivery to an end user, such defective part or parts will be repaired or replaced by Reist at his business location. It is the responsibility of the buyer, at his expense, to transport the machine or equipment to the manufacturer service shop or, to an authorized service depot or, alternatively, to reimburse Reist for any travel or transportation expense involved in fulfilling this warranty.

When requested by Reist, part or parts shall be returned for inspection, transportation prepaid, to a place designated by Reist.

Continued on next page....

# WARRANTY



IN NO EVENT SHALL THE BUYER BE ENTITLED TO RECOVER FOR INCIDENTAL OR CONSEQUENTIAL DAMAGES, INCLUDING, BUT NOT LIMITED TO, LOSS OF PRODUCT, INCONVENIENCE, RENTAL OR REPLACEMENT EQUIPMENT, LOSS OF PROFIT, OR OTHER COMMERCIAL LOSS.

This warranty becomes void and null if the equipment is modified, breaks down as the result of an accident, is not operated according to manufacturers recommendations, damaged by negligence or if maintenance has not been carried out as specified.

THIS WARRANTY IS NOT TRANSFERABLE.

**Reist Industries (Elmira) Ont.  
100 Union St., Elmira  
Ontario, Canada, N3B 2Z2  
[www.reistindustries.com](http://www.reistindustries.com)**