



# Broadcast Spreader

## OPERATOR & PARTS MANUAL

Serial # starting at A10027



# **TABLE OF CONTENTS**



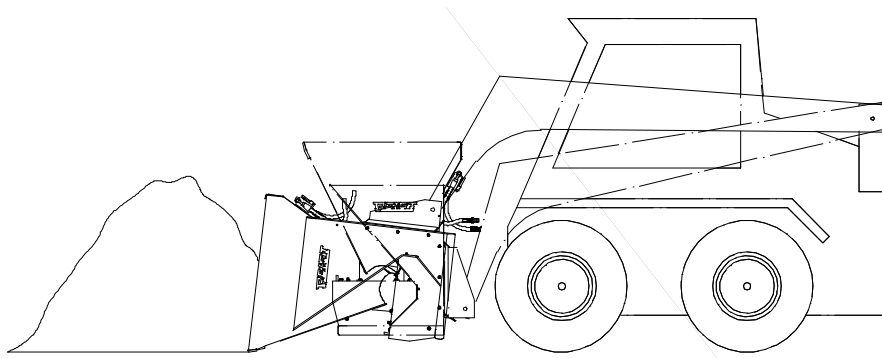
ITEM	PAGE
INTRODUCTION	2
SAFETY	3
STORAGE	4
OPERATING INSTRUCTIONS	5
PARTS	6
MOUNTING BRACKETS	7
PLUMPING DIAGRAM	8
SHUT OFF GATE (OPTION)	9
SHUT OFF GATE PLUMPING DIAGRAM (OPTION)	10
SIDEWALK DEFLECTOR (OPTION)	11
WARRANTY	12

## CONGRATULATIONS!!

Thank you for choosing the **Reist Broadcaster Spreader**. We feel confident that this equipment will meet your expectations in workmanship, reliability and performance.

This manual is to assist you with the safe operation of the Broadcaster Spreader.

The **Broadcaster Spreader** is a versatile piece of equipment to assist you in various applications. Such as spreading salt, fertilizer, variety of seeds, sand, peat moss, screened top soil for top dressing, esc. It is also designed so that with a skid steer the hopper can be filled same as a bucket, by scooping up the product.



MODEL NO. \_\_\_\_\_ SERIAL NO. \_\_\_\_\_.



## **CAUTION !**

1. For proper safe operation we recommend that the tractor or skid steer be equipped with an approved Roll-Over Protective Structure and Safety Belt.
2. Do not operate an engine in a confined or non-ventilated area.
3. Do not perform any adjustments or repairs with engine running.
4. Always lower the piece of equipment to the ground before performing adjustments or repairs.
5. Do not operate on excessive incline and always be careful when turning on slopes.
6. Never carry passengers on implement or tractor.
7. Never let a child operate machinery.
8. Hydraulic fluid under pressure can cause serious injury. Do Not use your hands to locate leaks.
9. It is the owner's responsibility to make sure that all operators read this manual before operating the equipment.

## Storage



1. Store in dry ventilated area.
2. Store with hydraulic cylinder piston rod in retracted position.
3. Clean before putting into storage.
4. Oiling the Broadcast Spreader before storage will ensure years of trouble free use.

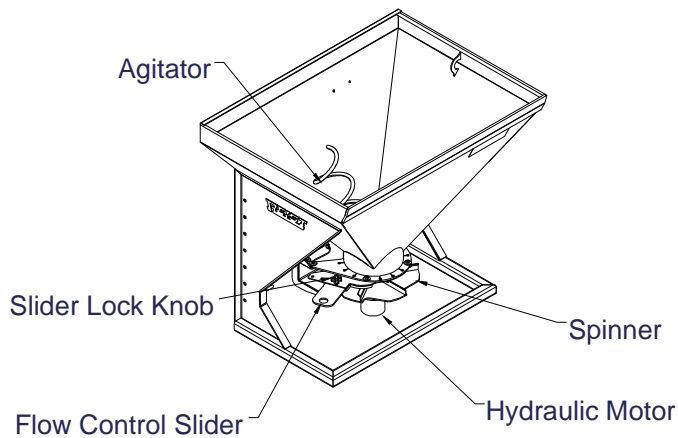
# Operating Instructions



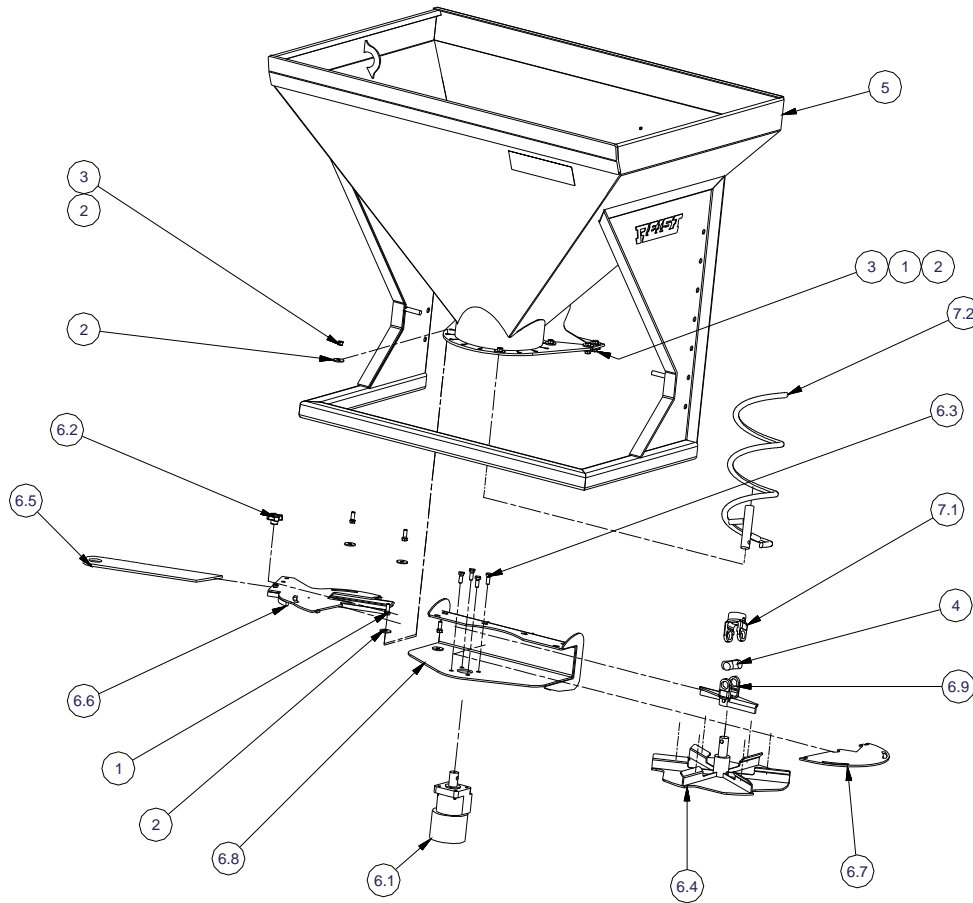
This spreader can be used to spread anything from salt, fertilizer, or seed. Also works great for top dressing lawn with screened top soil, peat moss and sand mixture.

## To Operate:

1. Attach to tractor or skid steer depending on which mount was purchase.
2. Connect hydraulic hoses. Check spinner direction.
3. Before filling hopper make sure spinner is working properly.
4. Fill hopper with product. **Make sure there are no stones or hard lumps.**
5. Adjust slider for desired rate.
6. With the flow control, set the speed of the spinner for desired spread width.



# PARTS Spreader

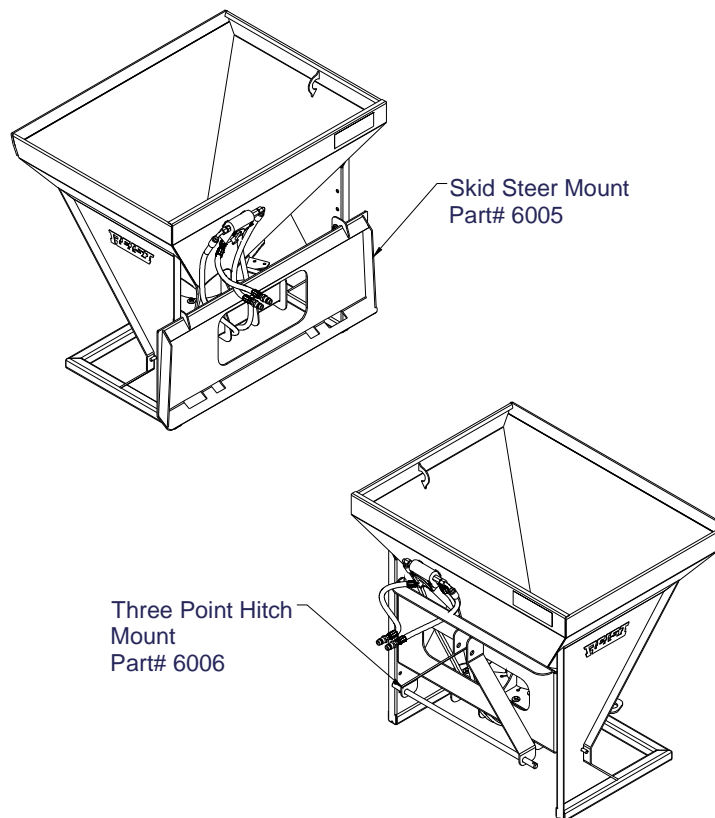


Parts List				Parts List			
ITEM	QTY	PART NUMBER	DESCRIPTION	ITEM	QTY	PART NUMBER	DESCRIPTION
1	10	381	Hex Bolt	6.4	1	6008	Spinner
2	20	38F	Washer	6.5	1	6009	Regulator Slider
3	10	38N	Hex Nut	6.6	1	6010	Regulator Plate
4	1	5-170	Cross	6.7	1	6012	Feeder Plate
5	1	6007	Spreader Weldment	6.8	1	6013	Motor Mount
6.1	1	103-3365	Hyd Motor	6.9	1	6015	Sweeper Yoke
6.2	1	134-022	Knob	7.1	1	10-4-93	short Yoke
6.3	4	381	Hex Bolt	7.2	1	6017	Agitator

# Mounting Brackets



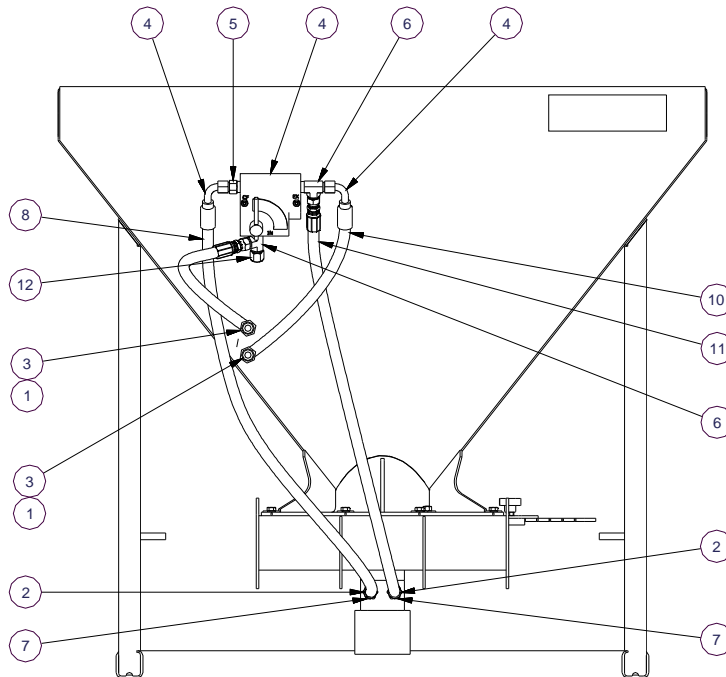
Two mounting brackets are available. A universal skid steer mount or category 1 three point hitch mount for a tractor. They are fastened with 4 bolts so they can be changed if need be.



# Plumbing Diagram



Plumbing diagram for flow control

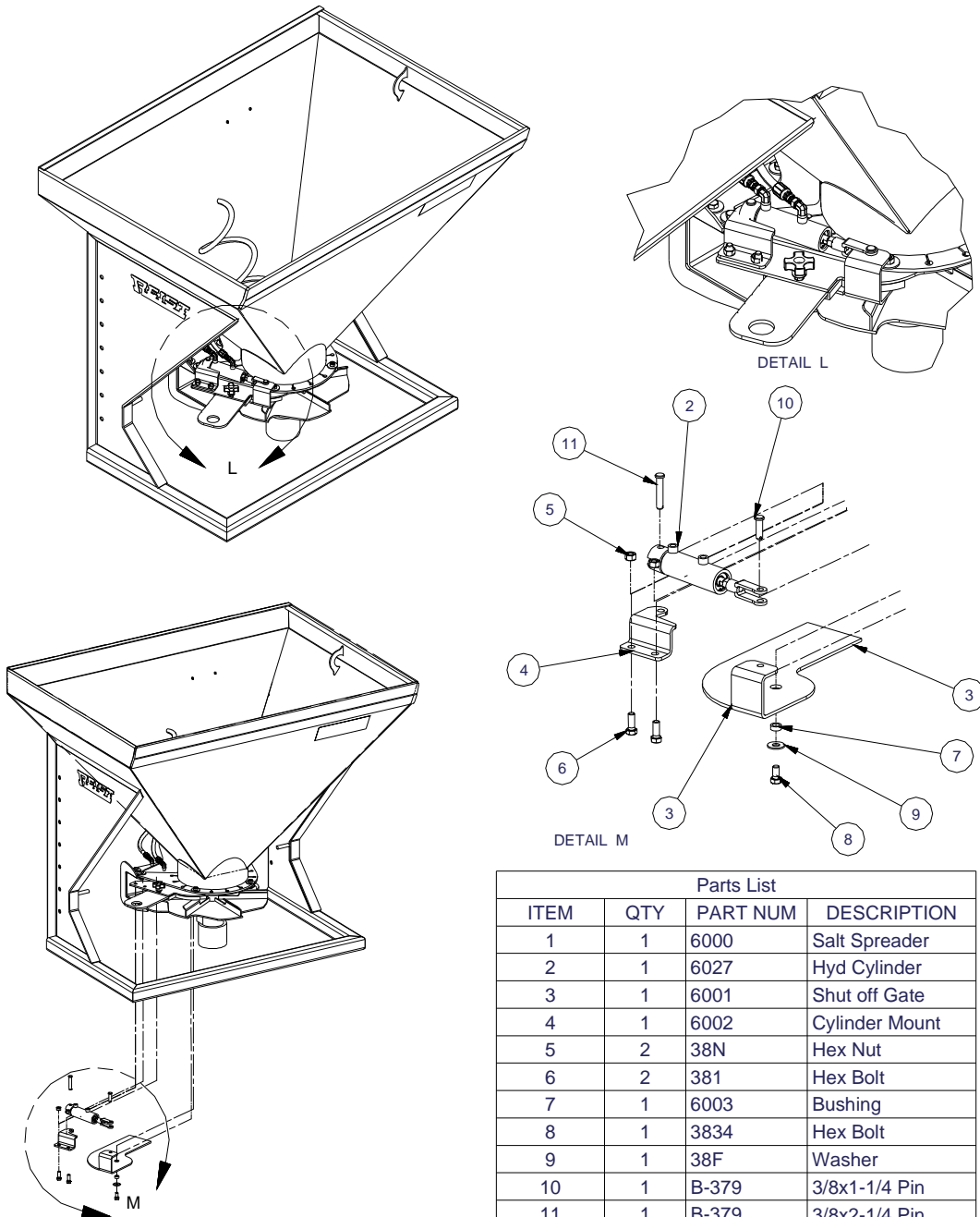


Parts List		
ITEM	QTY	PART NUMBE
1	2	08U108
2	4	08U608
3	2	8010-4
4	2	08U668
5	1	5208*8*8
6	2	5755*8*8*8
7	2	5315*8*10
8	1	122W 40
9	1	122W 60
10	1	122W 70
11	1	122W 36
12	1	7237*8

# Shut Off Gate ( Optional)

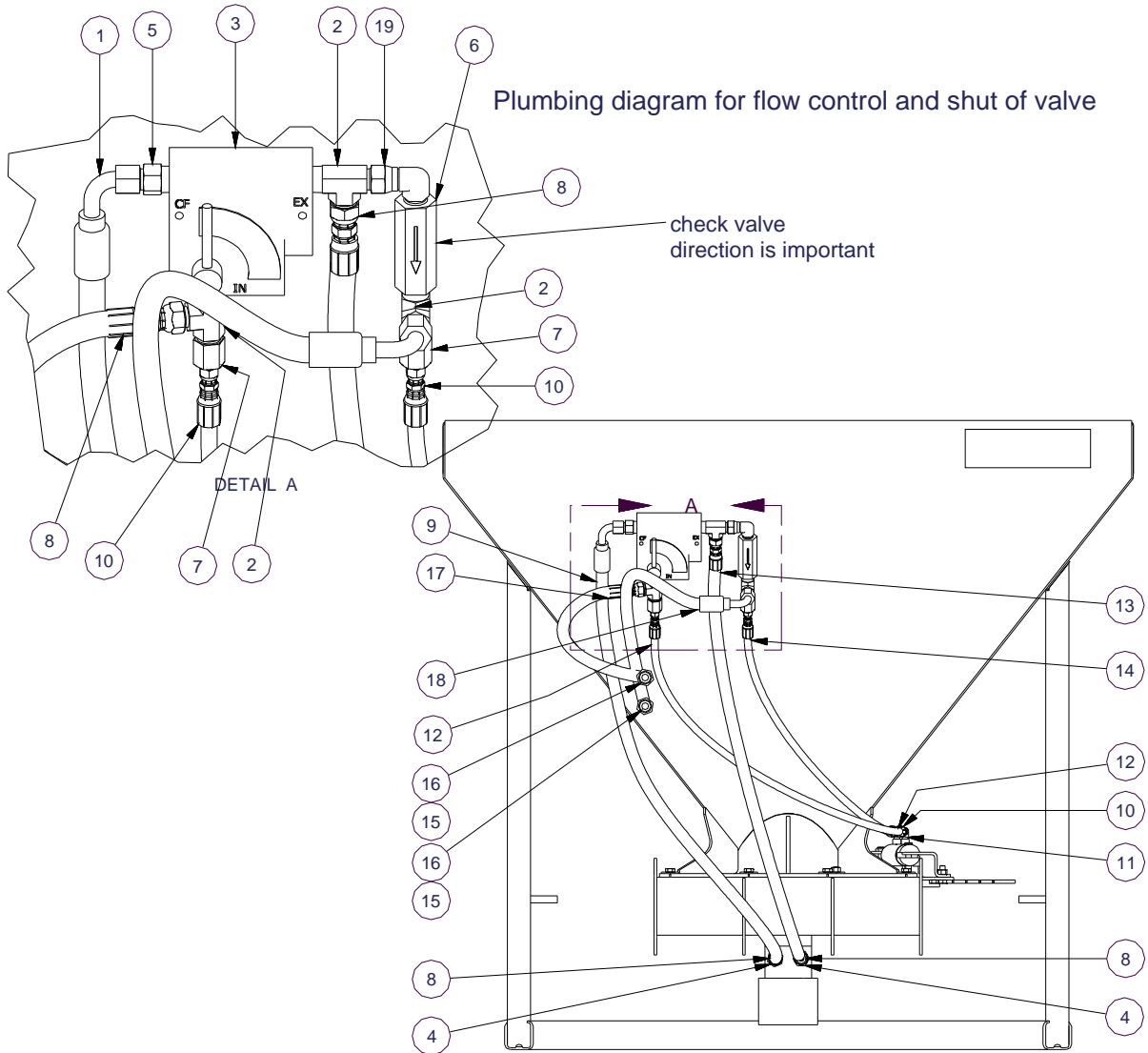


- With optional “Shut Off Gate”, shut off gate will automatically open when spinner is started and close shut off gate when hydraulic lever is put into reverse position.



Parts List			
ITEM	QTY	PART NUM	DESCRIPTION
1	1	6000	Salt Spreader
2	1	6027	Hyd Cylinder
3	1	6001	Shut off Gate
4	1	6002	Cylinder Mount
5	2	38N	Hex Nut
6	2	381	Hex Bolt
7	1	6003	Bushing
8	1	3834	Hex Bolt
9	1	38F	Washer
10	1	B-379	3/8x1-1/4 Pin
11	1	B-379	3/8x2-1/4 Pin
33	1	2250-8-8S	JIC Swivel Elbow 90 8-8

# Shut off Plumbing Diagram (optional)



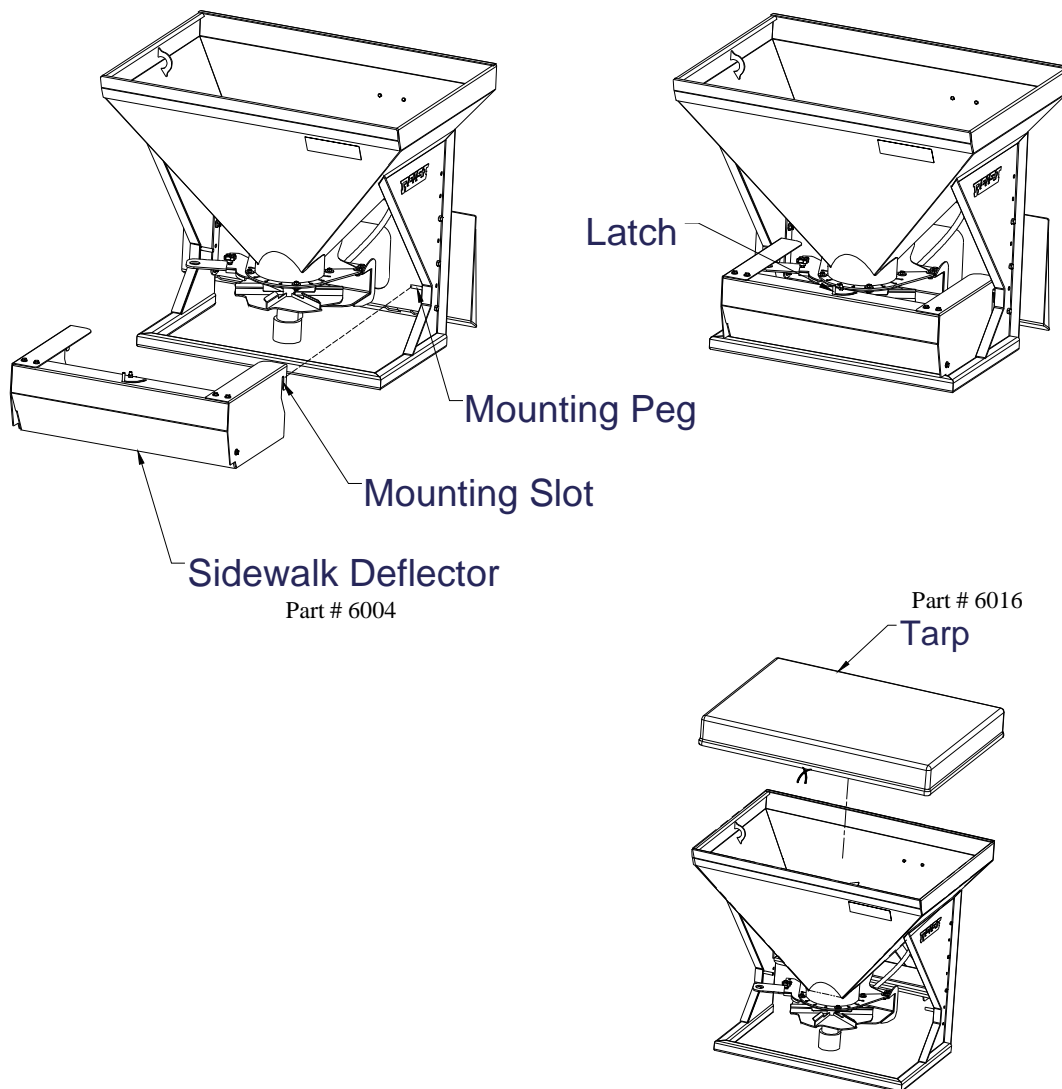
Parts List			Parts List		
ITEM	QTY	PART NUMBER	ITEM	QTY	PART NUMBER
1	2	08U668	11	2	5405*6*2
2	3	5755*8*8*8	12	1	142W 28
3	1	FC51-1/2	13	1	122W 36
4	2	5315*8*10	14	1	142W 28
5	1	5208*8*8	15	2	08U108
6	1	VUS4	16	2	8010-4
7	2	5015*8*6	17	1	122W 60
8	4	08U608	18	1	122W 70
9	1	122W 40	19	1	2250-8-8S
10	4	04U606			

## Sidewalk Deflector, Tarp (option)



Sidewalk deflector can easily be removed and installed. Hook mounting slot of deflector onto mounting peg on the spreader and swing latch to lock deflector into place. When using the deflector, slow down the spinner with the flow control. The deflector is so that the sand or salt can be spread in a controlled area.

The optional tarp is easily slipped over the hopper and held secure with a draw string.



# WARRANTY



All new Reist machinery is warranted to be free from defects in material or workmanship, which may cause failure under normal usage and service when used for the purpose, intended, for a period of 12 months. This warranty applies only to a new Reist product, there being no warranty of any nature in respect to new products that have been modified or altered, repaired, neglected, or used in any way, which, in the opinion of Reist adversely affects its performance.

In the event of failure of a part or parts, and upon inspection, Reist is satisfied that failure is due to defective material or workmanship within 12 calendar months, from the date of delivery to an end user, such defective part or parts will be repaired or replaced by Reist at his business location. It is the responsibility of the buyer, at his expense, to transport the machine or equipment to the manufacturer service shop or, to an authorized service depot or, alternatively, to reimburse Reist for any travel or transportation expense involved in fulfilling this warranty.

When requested by Reist, part or parts shall be returned for inspection, transportation prepaid, to a place designated by Reist. **IN NO EVENT SHALL THE BUYER BE ENTITLED TO RECOVER FOR INCIDENTAL OR CONSEQUENTIAL DAMAGES, INCLUDING, BUT NOT LIMITED TO, LOSS OF PRODUCT, INCONVENIENCE, RENTAL OR REPLACEMENT EQUIPMENT, LOSS OF PROFIT, OR OTHER COMMERCIAL LOSS.**

This warranty becomes void and null if the equipment is modified, breaks down as the result of an accident, is not operated according to manufacturers recommendations, damaged by negligence or if maintenance has not been carried out as specified.

THIS WARRANTY IS NOT TRANSFERABLE

### Proof of Purchase

Date of purchase (yyyy mm dd)		Model		Serial #	
Dealer purchased from		City		State or Province	Country
First Name		Last Name		Phone # (include area code)	
Address				State or Province	Country
City	Postal Code	Reist Industries Inc. 100 Union St. Elmira Ontario N3B 2Z2		519-669-1501	

### Proof of Purchase

Date of purchase (yyyy mm dd)		Model		Serial #	
Dealer purchased from		City		State or Province	Country
First Name		Last Name		Phone # (include area code)	
Address				State or Province	Country
City	Postal Code	Reist Industries Inc. 100 Union St. Elmira Ontario N3B 2Z2		519-669-1501	

**Reist Industries (Elmira) Ont.  
100 Union St., Elmira  
Ontario, Canada, N3B 2Z2  
[www.reistindustries.com](http://www.reistindustries.com)**