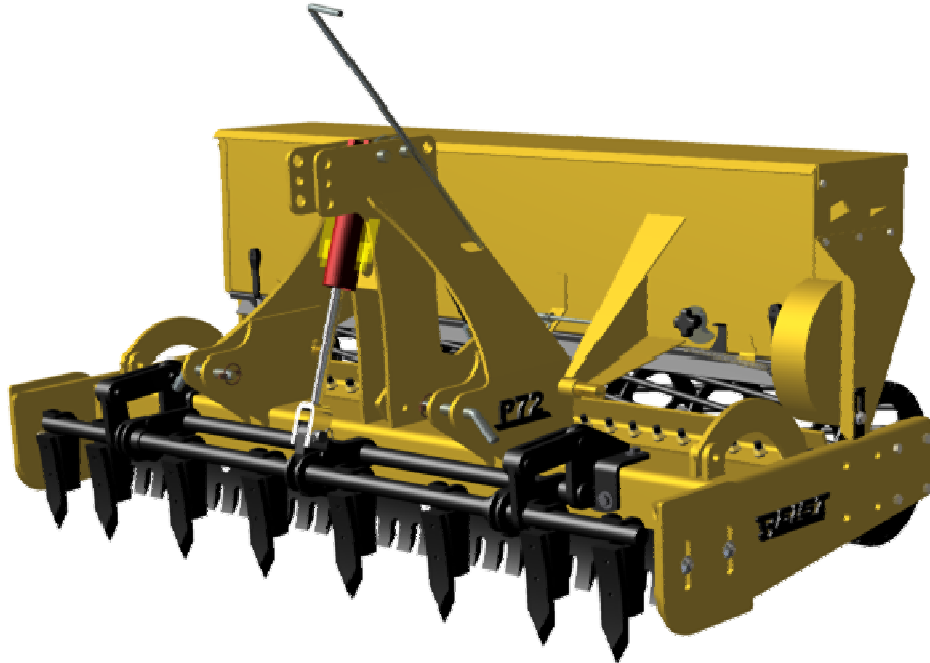




# LANDSCAPER

OPERATOR & PARTS MANUAL



<h1>TABLE OF CONTENTS</h1>	
----------------------------	---

<u>ITEM</u>	<u>PAGE</u>
INTRODUCTION .....	2
SAFETY .....	3 - 4
DAILY CHECK LIST .....	5
OPERATION INSTRUCTIONS .....	5
OPTIONAL ATTACHMENTS .....	6 - 7
MAINTENANCE & ADJUSTMENTS .....	8
SEED RATE .....	9
STORAGE .....	9
PARTS .....	10 - 16
WARRANTY .....	17

## **CONGRATULATIONS!**

Thank you for choosing the **REIST LANDSCAPER**. We feel confident that this equipment will meet your expectations in workmanship, reliability and performance.

This manual is to assist you with the safe operation of the **REIST LANDSCAPER**, This manual also identifies safety decals and information, maintenance intervals and proper storage instructions.

# CAUTION



## GENERAL SAFETY

1. **Careful operation is the best assurance against accidents. It is the owner's responsibility to make sure that all operator's read this manual before operating the equipment.**
2. **Familiarize yourself with all controls and always be ready to stop equipment quickly in case of emergency.**
3. **Never let a child operate machinery.**
4. **Protect yourself by wearing ear protection.**
5. **Hydraulic fluids under pressure can damage your skin. Do not use your hands to locate leak.**

## **OPERATING SAFETY**



# **CAUTION**

1. For proper safe operation we recommend that the tractor be equipped with an approved Roll-Over Protective Structure and Safety Belt.
2. Do not operate an engine in confined or non ventilated area.
3. Do not perform any adjustments or repairs with engine running.
1. Always lower 3 PT hitch to ground before performing adjustments or repairs.
2. Do not operate on excessive incline and always be careful when turning on slopes.
6. Never carry passengers on implement or tractor.

## **TRANSPORT SAFETY**

# **CAUTION**



1. Use proper safety lights on public roads.
2. Be alert while driving on road and never carry passengers.
3. Road speed should be such to maintain full control over steering and brakes.

## Daily Check List



1. Make sure all bolts are tight (tighten if necessary).
2. Check for worn or broken parts (replace if necessary).
3. Grease bushings & bearings as instructed in Maintenance and Adjustment section.

## OPERATION INSTRUCTIONS



### Important Set Up & Operation Instructions

1. Always use proper pin & bushing sizes when attaching Landscaper to tractor.
2. Make sure that bottom 3 PTH arms are level w/ tractor & stabilized to center.
3. Lower Landscaper to ground, putting 3 PTH lever to max. down position.
4. Adjust top link until cutting edge makes ground contact, plus desired digging depth (approx. 1 to 2 cm).
5. With 3 PTH lever in max. down position start grading at 4 to 8 km per hour.
6. Readjust top link to maintain desired cutting depth.
7. Using this method of adjustment the Landscaper will remove high spots & fill in low spots.
8. For best results use alternative driving patterns as you grade.
9. If chatter occurs while grading SLOW DOWN.

## Uses & Instructions

### **Ripper Attachment**

The ripper attachment mounts to the front of the Landscaper ahead of the serrated cutting edge, and is adjustable from 5 cm above the cutting edge to 12 cm below. The ripper can be used in conjunction with all other settings on the Landscaper, or can be used solely with any desired setting.

#### **USES:**

- Lawn rejuvenations
- Hard packed soil
- Sub soil cultivation
- Equestrians surface rejuvenations.

### **Harrow Attachment**

The harrow mounts behind the serrated cutting edge and in front of the pulveriser roll. The harrow can be used in conjunction with all other settings on the landscaper, or can be solely used with any desired setting. The harrow can be raised and lower with ratchet jack or a special hydraulic cylinder (part# CYL-S).

#### **USES:**

- Comb while levelling top soil.
- Soil conditioner while seeding (adjust harrow approx. 1 to 2 cm into soil).
- Drag brush & stones into a windrow.

### **Tiller Attachment**

The tiller attachment fits on the same mounting brackets as the harrow when removed. Extension brackets are supplied to move the pulveriser roll back making antique space. The tiller is adjustable to approx. 15 cm below ground surface. To operate the tiller lower landscaper with back pulveriser roll on the ground and the serrated cutting edge 2 to 3 cm above ground surface. Lower the tiller to the desired depth and slowly move forward. If the slip clutch slips stop tractor and inspect tiller for blockages.

#### **USES:**

- Garden tilling
- Lawn making & rejuvenating
- Equestrian surface rejuvenating.

## **Grass Seeding Attachment**

The grass seeding attachment mounts to the back of the 3 PTH frame with two hinge pins. The harrow adjustment link needs to be replaced with a modified link which is supplied with the grass seeding attachment. The back end of the seeder is supported by two hinged legs which disengage the seed box mechanism. To use the seeder, by hand lift the back of the seed box up and turn the hinged legs in the up position. When lowered the drive cog wheel on the seed box will mesh with the pulveriser roller on the back of the Landscaper. Lower the Landscaper to the ground and extend the top link to the tractor until the serrated cutting edge clears the ground surface. Lower the harrow into the soil 1 to 2 cm. At the back of the seed box loosen and adjust the seed rate cam to the desired seed flow rate and retighten. From the tractor seat turn the lever ½ turn to open the seed flow gate. The seed will begin to flow as you drive (recommended speed 4 to 8 km per hour). The seed will drop behind the harrow where the soil is moving and the pulveriser roller will pack it in.

### **USES:**

- Primary lawn or pasture seeding

## **Brush Attachment**

The brush attachment is normally used for grooming purposes.

The brush mounts to the back of the Landscaper, using the back two bearing mounting bolts to fasten the brush mounting brackets. To use lower the Landscaper and adjust top link so the serrated cutting edge is into the surface by 5 to 10 mm. By turning the two screw jacks lower the brush to the surface until a small amount of pressure is on the bristles. When set push the jack handles down to lock the set position. Groom at desired speed. If chatter occurs SLOW DOWN.

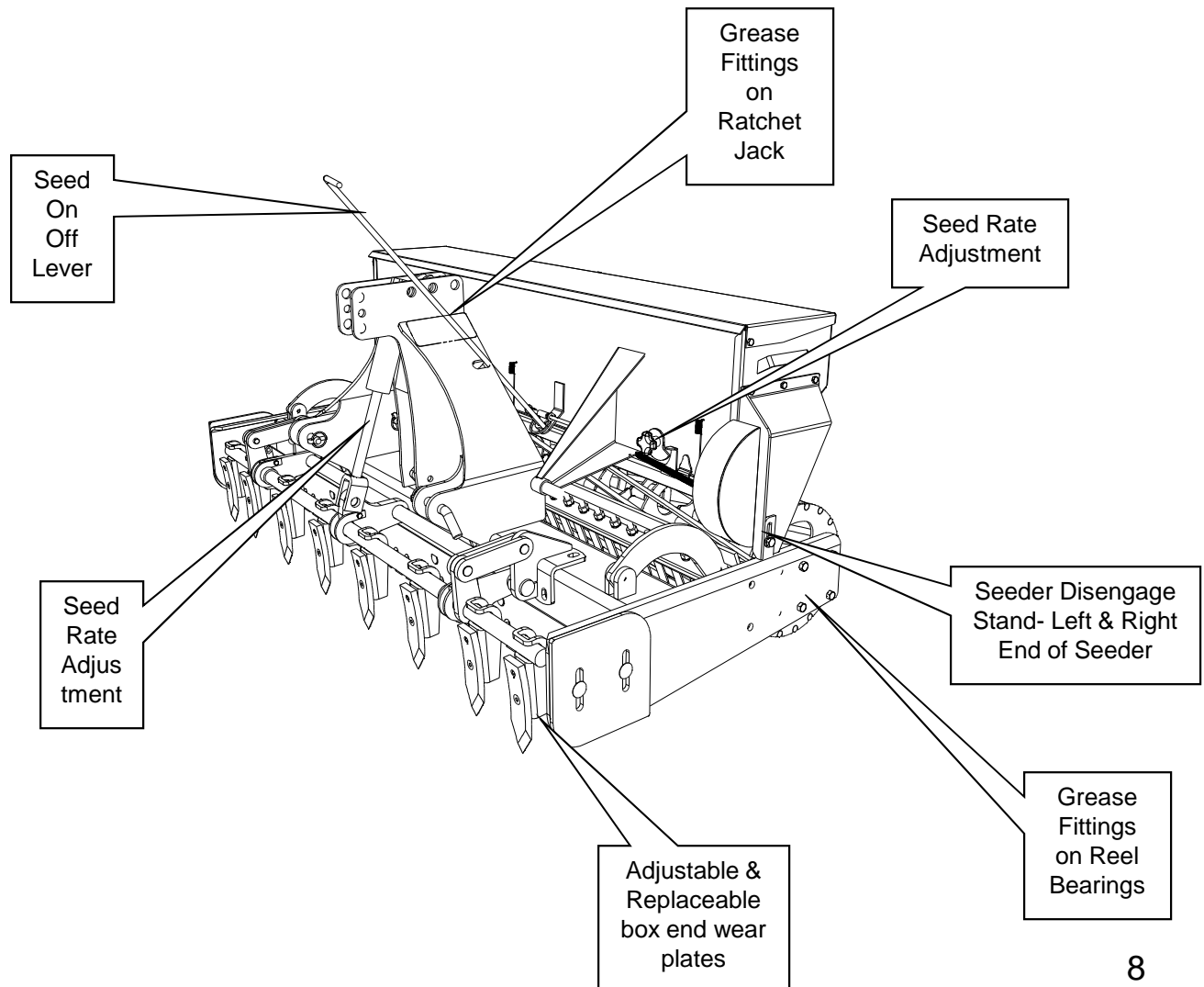
### **USES:**

- Walking trails
- Ball diamonds
- Cart paths
- Equestrian

## **MAINTENANCE & ADJUSTMENTS**



1. **Clean grease fittings before adding grease to avoid injecting dirt and sand.**
  2. **Replace damaged grease fittings**
  3. **Lubricate reel bearings and ratchet jack after every 50 hours of use.**
  4. **Check all nuts and bolts after first hour of use and before each use.**
  5. **Check individual diamond tooth harrow mounting nuts after first hour of use and then before each use.**
1. **Adjust or replace wear plates at box ends as needed.**
  2. **Ratchet jacks adjust harrow and ripper to desired depth.**
  3. **Adjust seed rate to desired pounds per 1000 square feet. (see seed rate)**
  4. **Disengage seeder by using stands on both ends of seed box.**



## SEED RATE



**For accurate calibration please do the following procedure**

**For GS72 seed box**

Put double or triple the desired amount of seed for 1000 square feet coverage into the box and set the seed rate dial to the desired approximate setting and drive 180 feet with seeder engaged. Remove remaining seed that is in the seed box and weigh, the difference is the amount that is being applied. Increase or decrease the seed rate dial setting as needed.

**For GS60 seed box**

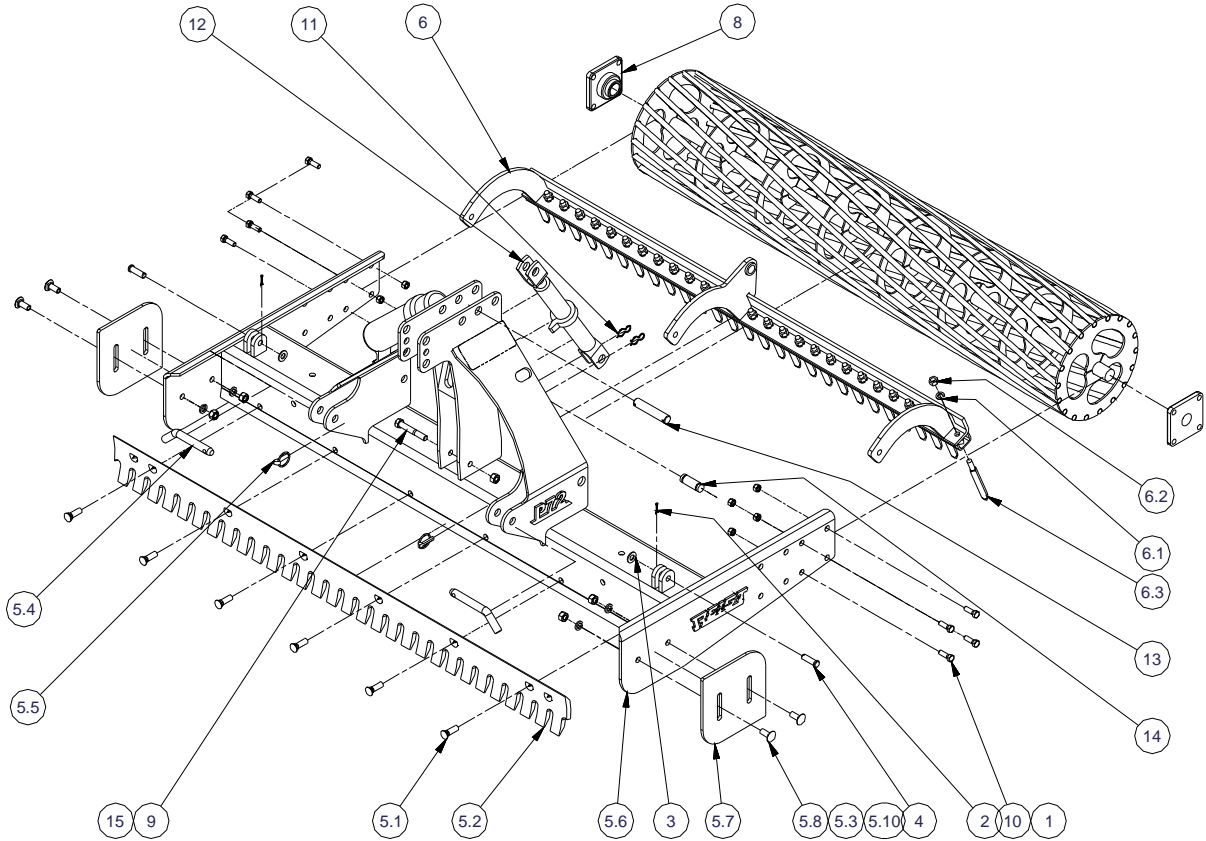
Follow the same steps as above, but drive 222 feet with seeder engaged.

## STORAGE



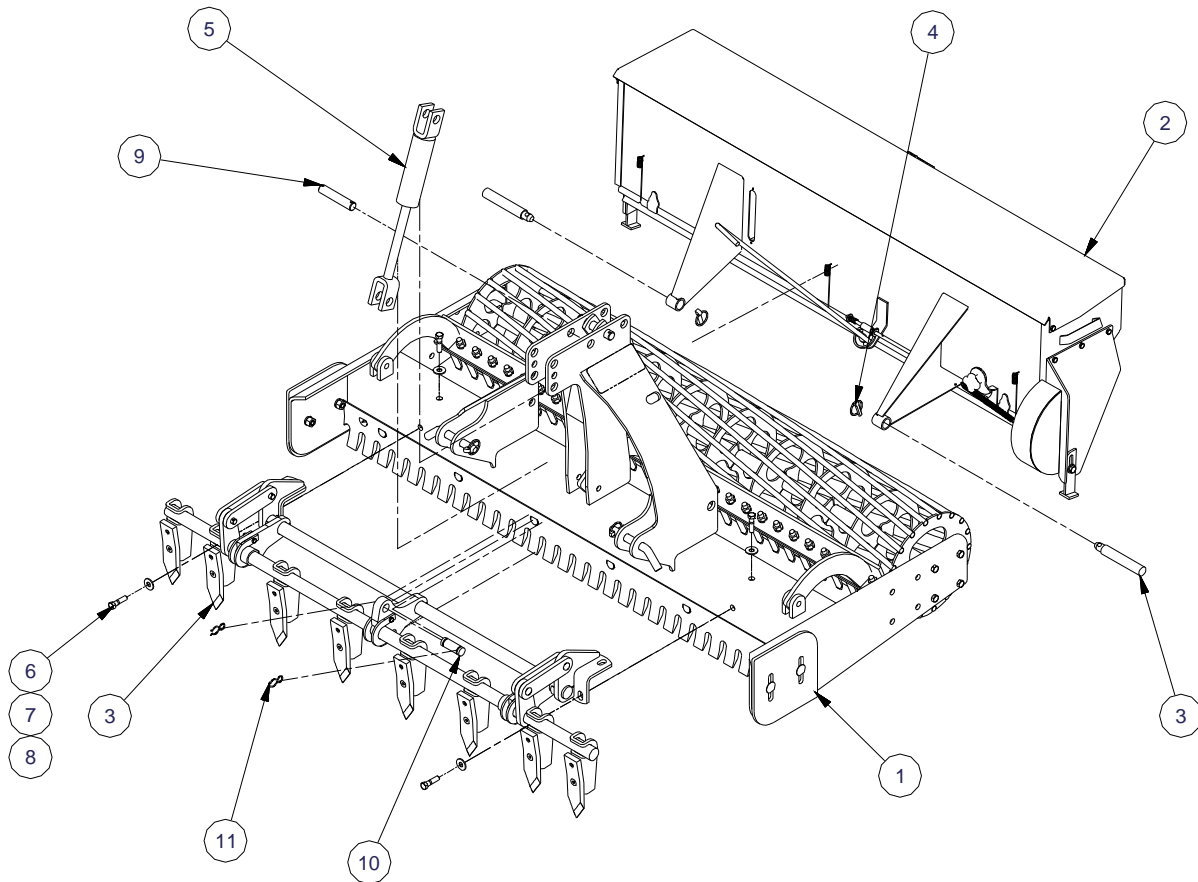
- 1.Store in dry ventilated area.
- 2.Store any hydraulic cylinder piston rods in retracted position.
- 3.Clean before putting into storage.
- 4.Touch-up paint as needed.
- 5.Lubricate all grease fittings before storage.

# Landscaper & Harrow Attachment



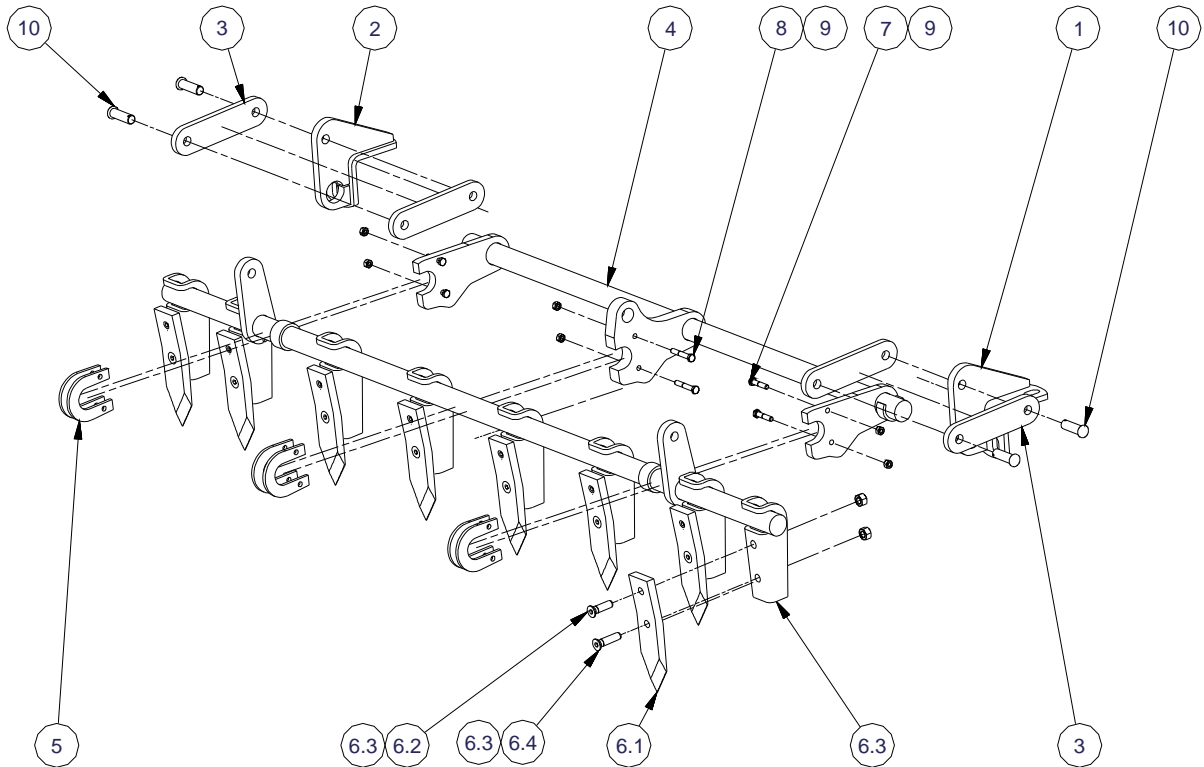
Parts List				Parts List			
ITEM	QTY	PART NUMBER	DESCRIPTION	ITEM	QTY	PART NUMBER	DESCRIPTION
1	8	12FSLN	1/2 Flange Serrated Lock Nut	6	1	H_ _	Harrow (inches wide)
2	2	532112CP	Cotter Pin	6.1	28	916LO	9/16 Lock Washer
3	2	58FL	Flat Washer	6.2	28	916CN	9/16 Nut
4	2	B1803	5/8x2 Pin	6.3	28	972824	9/16 Harrow Tooth
5.1	6	5823PB	5/8 x 1-1/2 Plow Bolt	7	1	R_ _	Roller ( Inches Wide)
5.2	1	586_1VS	Cutting Edge (ft wide)	8	2	SAF208-24G	Bearing
5.3	4	58L	5/8 Lock Washer	9	1	584	Bolt
5.4	2	CAT1-784	Cat 1 Arm Pin	10	8	12112	Bolt
5.5	2	385507	Linch Pin	11	2	637856	Hiar Pin Lock
5.6	1	F_ _	Frame (inches wide)	12	1	386501	Ratched Jack
5.7	2	1000	Wear Plate	13	1	387505	1x5 Pin
5.8	4	58112C	5/8x1-1/2 Carriage Bolt	14	1	637855	Pin
5.9	1	Drawing Holder		15	1	58N	5/8 Nut
5.10	4	58N	Hex Nut				

# Ripper & Grass Seeder Attachment



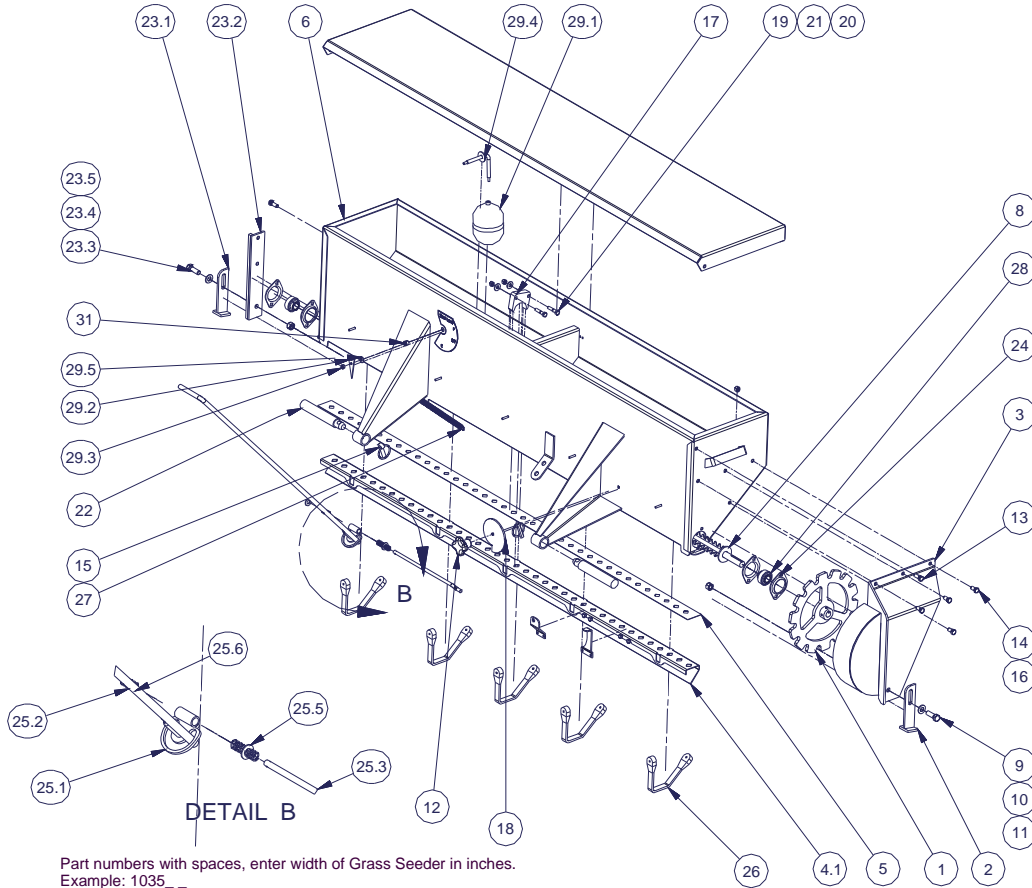
Parts List			
ITEM	QTY	PART NUMBER	DESCRIPTION
1	1	F_ _	Frame
2	1	GS_ _	Grass Seeder (inches wide)
3	2	78-1187	Seeder Mount Pin
4	2	385507	Linch Pin
5	1	20FEM08-NW	Ripper Cylinder
6	8	12*2	1/2X2 Bolt
7	4	12F	Washer
8	1	12N	Nut
9	2	387505	1x5 Pin
10	1	637855	Pin
11	2	637856	Hiar Pin Lock

# Ripper Attachment



Parts List			
ITEM	QTY	PART NUMBER	DESCRIPTION
1	1	1001	L.H. Mount
2	1	1002	R.H. Mount
3	4	1003	Connector Link
4	1	1004	Rock Shaft (Same for all Rippers)
5	6	1005	CLIP
6	1	100_	Ripper Bar (inches wide)
6.1	8	1009	5/8x2 Spike Tooth
6.2	8	12112FH	Flat Head Bolt
6.3	16	12FLSN	Flange Serrated Nut
6.4	8	209922	1/2x1-3/4 Plow Bolt
7	4	516112	Bolt
8	2	5162	Bolt
9	6	516N	Hex Nut
10	4	B1803	5/8x2 Pin

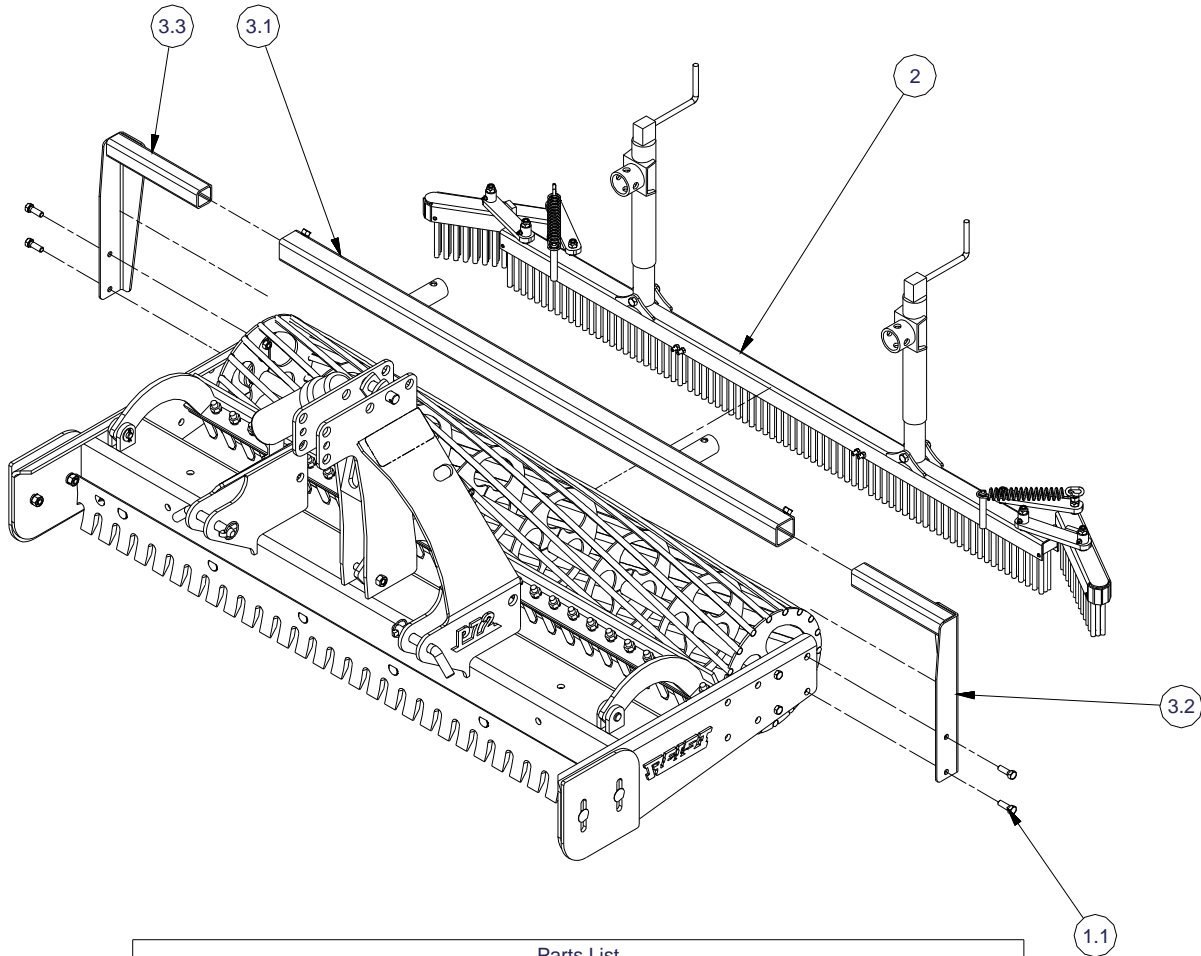
# Grass Seeder Attachment



Part numbers with spaces, enter width of Grass Seeder in inches.  
 Example: 1035\_\_  
 Enter as:103572

Parts List				Parts List				Parts List			
ITEM	QTY	PART NUMBER	DESCRIPTION	ITEM	QTY	PART NUMBER	DESCRIPTION	ITEM	QTY	PART NUMBER	DESCRIPTION
1	1	1011	Drive Sprocket	13	2	38*1	Bolt	25.1	1	1024	Welded Assembly
2	1	1017	Stand	14	4	3834	Bolt	25.2	1	1028	Operator Seed Control Rod
3	1	1019	Drive End Shield	15	2	385507	Linch Pin	25.3	1	1029	Rod
4.1	1	1035__	Seed Slide	16	4	38N	Nut	25.4	1	11657	Compression Spring
4.2	1	1037	Slider Stop	17	1	5060	Center Agitator Brg	25.5	2	38F	Flat Washer
4.3	1	1038	Spring rod connector	18	1	5099	Seed Rate Dial	25.6	1	A15-67	Compression Spring
4.4	4	1434	Bolt	19	2	516112	Hex Bolt	26	5	SH-9	Tarp Strap
4.5	4	14N	Nut	20	2	516N	Hex Nuts	27	1	TE1588-203-1524	Spring
5	1	1034__	Seed Insert	21	2	516W	Washer	28	2	UC204 012	Bearing
6	1	1036__	Seed Box (in inches)	22	2	78-1187	Seeder Mount Pin	29.1	1	3305471	Seed Level Ball
7	1	1039__	Grass Seeder Lid	23.1	1	1017	Stand	29.2	1	5095	Seed Level Arrow
8	1	1040__	Agitator (inches wide)	23.2	1	1021	Stand Mounting Plate	29.3	1	14N	Nut
9	1	121NF	Bolt	23.3	1	121NF	Bolt	29.4	1	1097	Seed Level Rod
10	1	12FL	Washer	23.4	1	12FL	Washer	29.5	1	14FW	Washer
11	1	12N	Nut	23.5	1	12N	Nut	30	1		Decal Bin Leve
12	1	134-022	Knob	24	4	MST47	Bearing Flange	31	2	315-709	Snap Bushing

# Broom Attachment

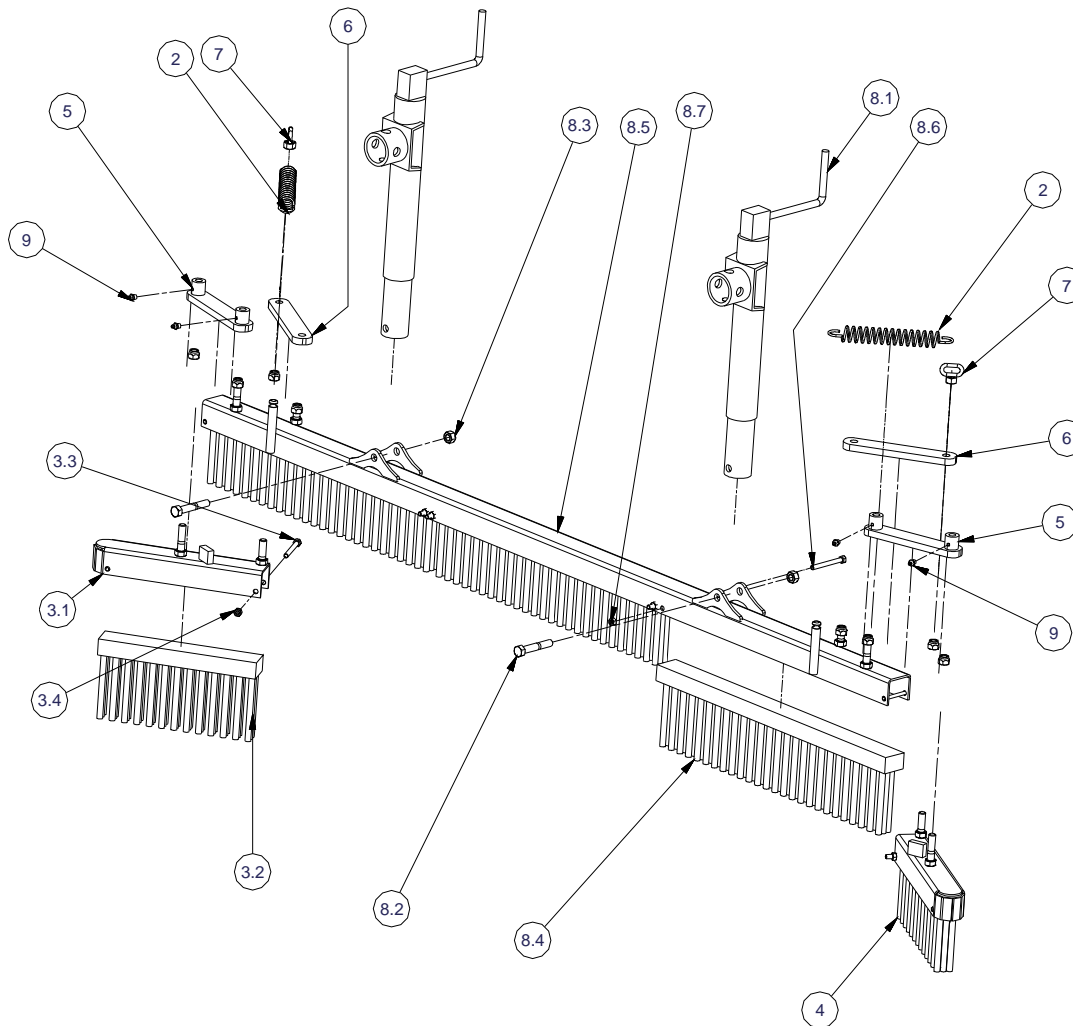


Parts List			
ITEM	QTY	PART NUMBER	DESCRIPTION
1.1	8	12112	Bolt
2	1	2023	Broom Assembly
3.1	1	1031	Broom Mount Cross tube
3.2	1	1032	Broom Mount End Bracket
3.3	1	1033	Broom Mount End bracket Right

# Broom Assembly

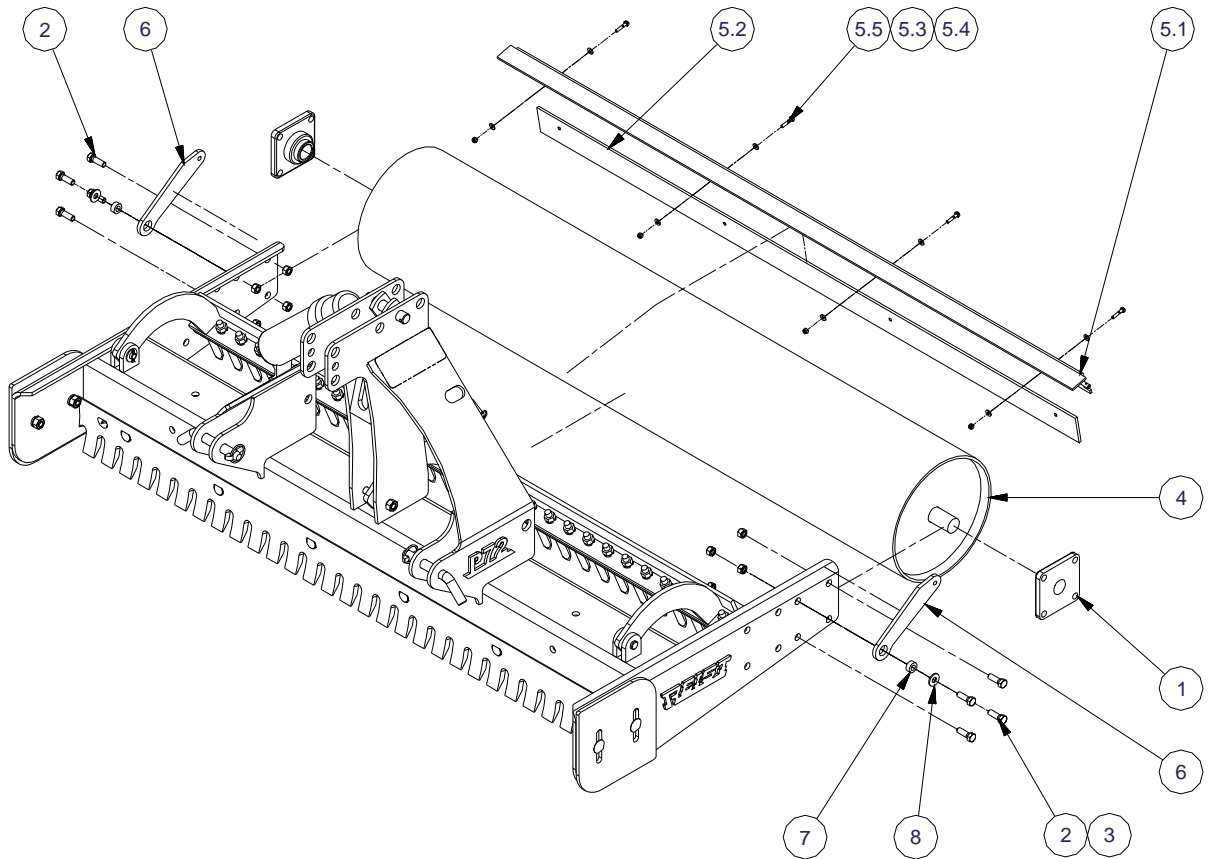


## Broom Assembly



Parts List				Parts List			
ITEM	QTY	PART NUMBER	Discription	ITEM	QTY	PART NUMBER	Discription
1	8	12CLN	Lock Nut	7	2	2017	Spring Anchor
2	2	16148	Spring	8.1	2	10TWI	Brush adjustment Jack
3	1	2013	R.H. End Brush Holder	8.2	2	12*3	Bolt
3.1	1	1212	Hex Bolt	8.3	2	12N	Hex Nut
3.2	1	2012	End Brush	8.4	3	2010	Main Frame Brush
3.3	1	516*3	Bolt	8.5	1	2011	Main Brush Frame
3.4	1	516N	Hex Nuts	8.6	4	516*3	Bolt
4	1	2014	L.H. Brush Holder	8.7	4	516N	Hex Nuts
5	2	2015	Pivot Arm ( with bushing)	9	4	GF	1/8 NPT ST Zerk
6	2	2016	Pivot Arm (without bushing)				

# Smooth Roll Attachment



Parts List			
ITEM	QTY	PART NUMBER	DESCRIPTION
1	2	SAF208-24G	Bearing
2	8	12112	Bolt
3	8	12FSLN	1/2 Flange Serrated Lock Nut
4	1	5055_ _	Landscaper Smooth Roll(width in inches)
5.1	1	5040_ _	Smooth Roll Scraper Angle
5.2	1	1/4x3x_ _UHMW	UHMW Scraper
5.3	8	14F	Washer
5.4	4	14CLN	1/4 Lock Nut
5.5	4	14114	Bolt
6	2	5041	Scraper Bracket
7	2	5038	Scraper Bushing
8	2	12F	Washer

# WARRANTY



All new Reist machinery is warranted to be free from defects in material or workmanship, which may cause failure under normal usage and service when used for the purpose, intended, for a period of 12 months. This warranty applies only to a new Reist product, there being no warranty of any nature in respect to new products that have been modified or altered, repaired, neglected, or used in any way, which, in the opinion of Reist adversely affects its performance.

In the event of failure of a part or parts, and upon inspection, Reist is satisfied that failure is due to defective material or workmanship within 12 calendar months, from the date of delivery to an end user, such defective part or parts will be repaired or replaced by Reist at his business location. It is the responsibility of the buyer, at his expense, to transport the machine or equipment to the manufacturer service shop or, to an authorized service depot or, alternatively, to reimburse Reist for any travel or transportation expense involved in fulfilling this warranty.

When requested by Reist, part or parts shall be returned for inspection, transportation prepaid, to a place designated by Reist. **IN NO EVENT SHALL THE BUYER BE ENTITLED TO RECOVER FOR INCIDENTAL OR CONSEQUENTIAL DAMAGES, INCLUDING, BUT NOT LIMITED TO, LOSS OF PRODUCT, INCONVENIENCE, RENTAL OR REPLACEMENT EQUIPMENT, LOSS OF PROFIT, OR OTHER COMMERCIAL LOSS.**

This warranty becomes void and null if the equipment is modified, breaks down as the result of an accident, is not operated according to manufacturers recommendations, damaged by negligence or if maintenance has not been carried out as specified.

THIS WARRANTY IS NOT TRANSFERABLE

### Proof of Purchase

Date of purchase (yyyy mm dd)		Model		Serial #	
Dealer purchased from		City		State or Province	Country
First Name		Last Name		Phone # (include area code)	
Address				State or Province	Country
City	Postal Code	Reist Industries Inc. 100 Union St. Elmira Ontario N3B 2Z2		519-669-1501	

### Proof of Purchase

Date of purchase (yyyy mm dd)		Model		Serial #	
Dealer purchased from		City		State or Province	Country
First Name		Last Name		Phone # (include area code)	
Address				State or Province	Country
City	Postal Code	Reist Industries Inc. 100 Union St. Elmira Ontario N3B 2Z2		519-669-1501	

**Reist Industries Inc. Ont.  
100 Union St., Elmira  
Ontario, Canada, N3B 2Z2  
[www.reistindustries.com](http://www.reistindustries.com)**