



HRG Series

Roto-Groomer

Operator Instructions & Parts Manual
Serial # from J2234



<u>TABLE OF CONTENTS</u>	
---------------------------------	--

<u>ITEM</u>	<u>PAGE</u>
INTRODUCTION	2
SAFETY	3-4
SETUP INSTRUCTIONS.....	5
OPERATION INSTRUCTIONS	6
MAINTENANCE & ADJUSTMENTS	7
ROLLERS OPTIONS	8
PARTS	9-12
WARRANTY	13

CONGRATULATIONS!

Thank you for choosing the **REIST HRG Series Roto-Groomer**. We feel confident that this equipment will meet your expectations in workmanship, reliability and performance.

This manual is to assist you with the safe operation of the **REIST HRG series Roto-Groomer**; this manual also instructs safety information, maintenance intervals and proper storage instructions.

CAUTION



GENERAL SAFETY

- 1. Careful operation is the best assurance against accidents. It is the owner's responsibility to make sure that all operator's read this manual before operating the equipment.**
- 2. Familiarize yourself with all controls and always be ready to stop equipment quickly in case of emergency.**
- 3. Never let a child operate machinery.**
- 4. Protect yourself by wearing ear protection.**
- 5. Hydraulic fluids under pressure can damage your skin. Do not use your hands to locate leaks.**

OPERATING SAFETY



CAUTION

1. **For proper safe operation we recommend that the tractor be equipped with an approved Roll-Over Protective Structure and Safety Belt.**
2. **Do not operate an engine in confined or non ventilated area.**
3. **Do not perform any adjustments or repairs with engine running.**
1. **Always lower 3 PT hitch to ground before performing adjustments or repairs.**
2. **Do not operate on excessive incline and always be careful when turning on slopes.**
6. **Never carry passengers on implement or tractor.**

TRANSPORT SAFETY

CAUTION



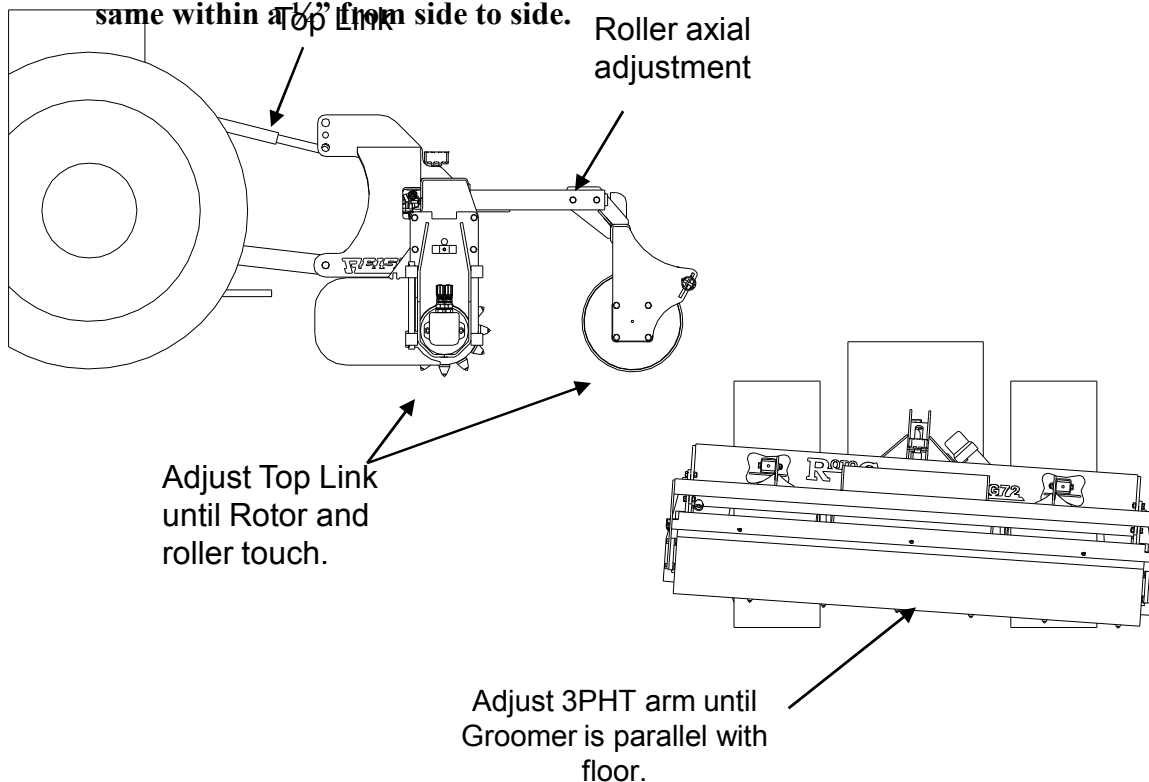
1. **Use proper safety lights on public roads.**
2. **Be alert while driving on road and never carry passengers.**

Important Setup Instructions

The Roto-Groomer is mounted to the tractor with 3pth category 1. There are bushing that can be used if hitching to tractor with category 2. It is **IMPORTANT** that proper adjustments are made to achieve best results.

Setup:

1. Back tractor within approximately 10" of Roto-Groomer and attach hydraulic pump to tractor.
2. Then back tractor to Roto-Groomer and hitch to 3pth.
3. Use proper pin & bushing sizes when attaching Roto-Groomer to tractor.
4. Have the tractor and Roto-Groomer on level ground preferably concrete for initial setup.
5. Lower Roto-Groomer to ground, putting 3 PTH lever to max. down position and adjust top link until front rotor and rear roller touches the ground.
6. Make sure rotor and roller are parallel. If not loosen bolts for roller axial adjustment. Adjust and tighten bolts.
7. Lift Roto-Groomer approx. 1 inch off of ground and adjust 3pth arm so that the Roto-Groomer is parallel with the floor. The distance should be the same within a top link

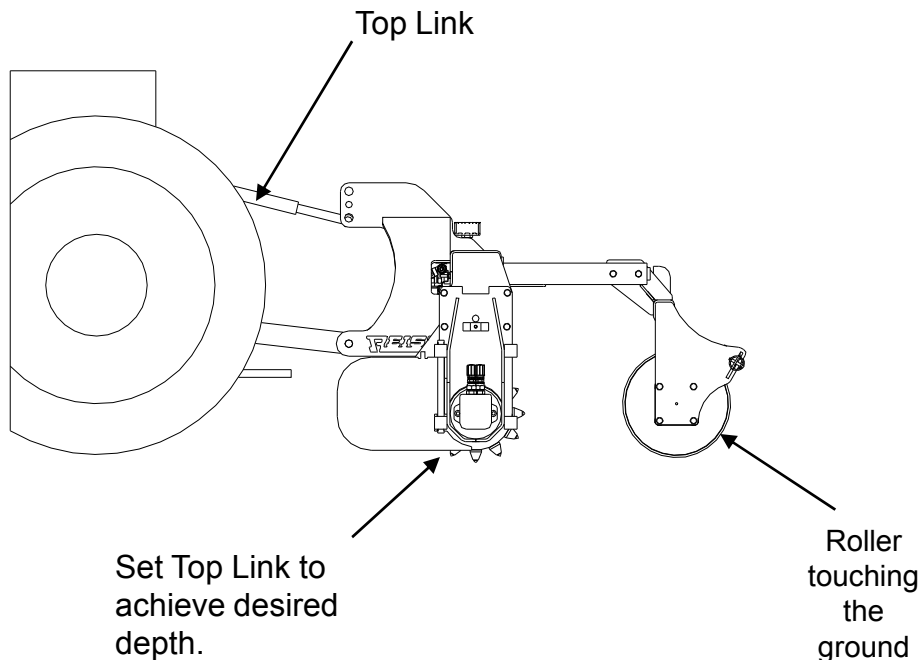


Operation Instructions

The Roto-Groomer is mounted to the tractor with 3pth category 1. There are bushing that can be used if hitching to tractor with category 2. It is **IMPORTANT** that proper adjustments are made to achieve best results.

Operation:

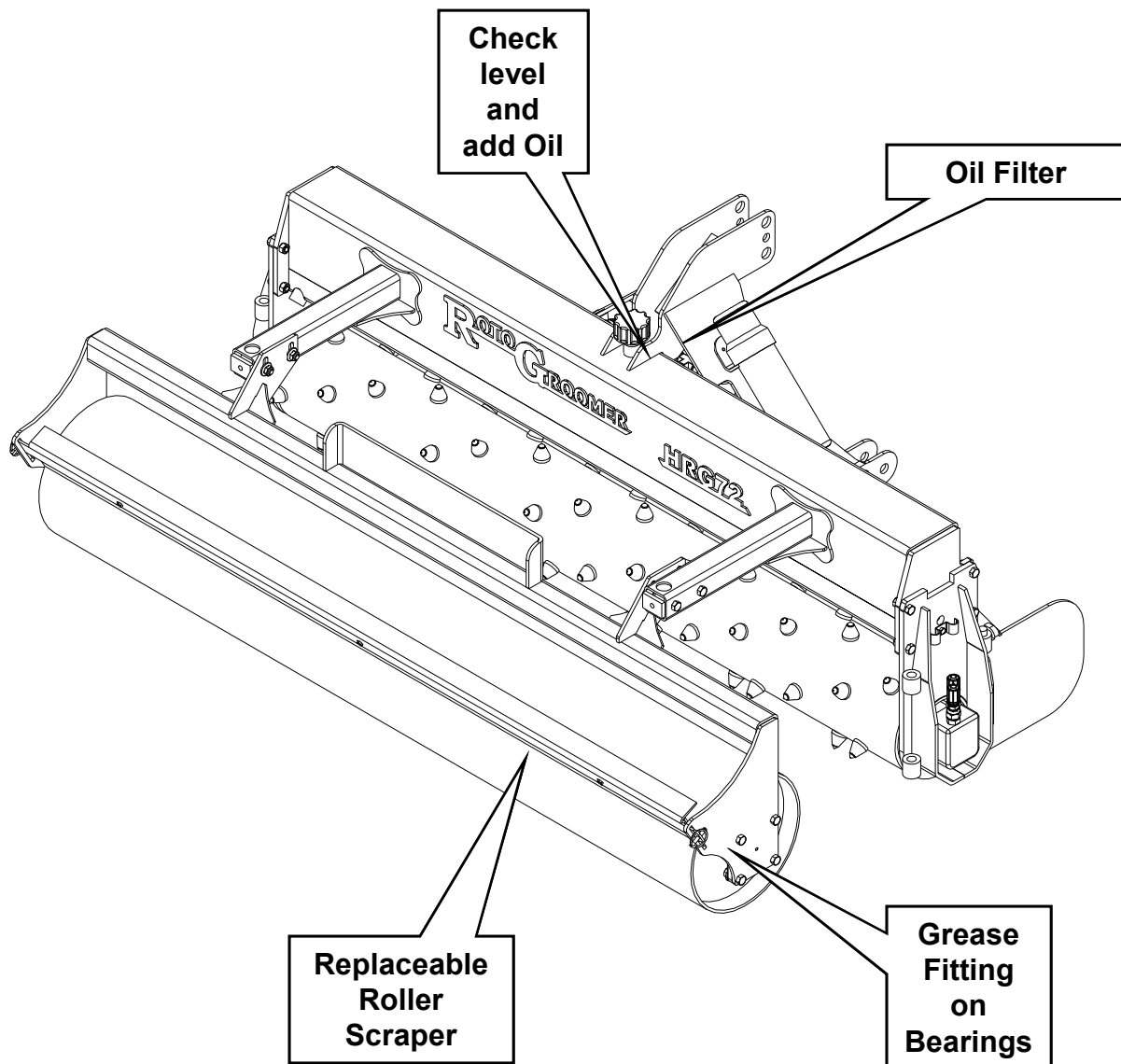
1. Engage PTO on tractor to start the Roto-Groomer.
2. With 3 PTH lever in max. down position start Grooming at 4 to 8 km per hour.
3. Adjust the top link until grooming at desired depth.
4. If only leveling is required, ½” to 1” depth is all that is needed.
5. Using this method the Roto-Groomer will remove high spots & fill in low spots.
6. If loosening hard packed soils you might want to go as deep as 3”. This will take more power and will have reduce speed.



MAINTENANCE & ADJUSTMENTS



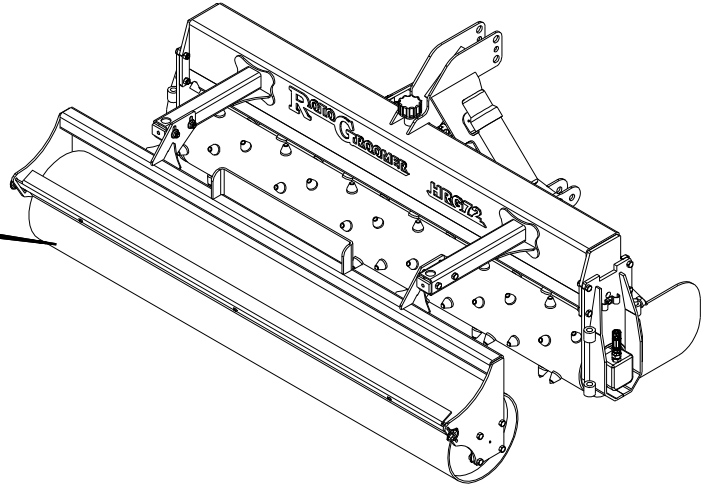
1. **Clean grease fittings before adding grease to avoid injecting dirt and sand.**
2. **Replace damaged grease fittings**
3. **Check oil level 50 hours of use. There should be between 7" to 9" of oil. Use universal transmission / hydraulic fluid.**
4. **Check all nuts and bolts after first hour of use.**



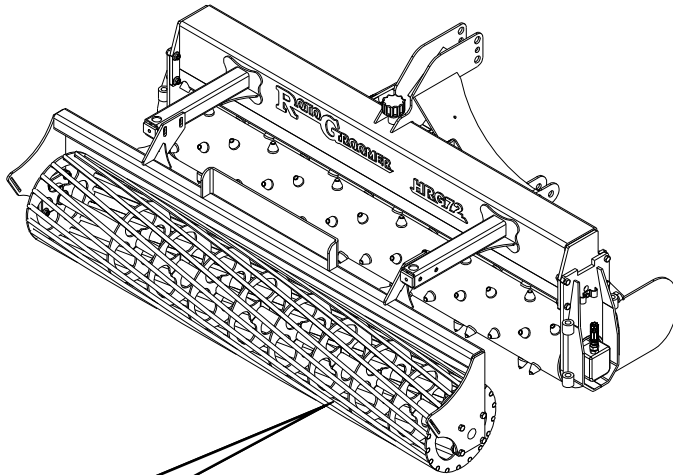
Roller Options



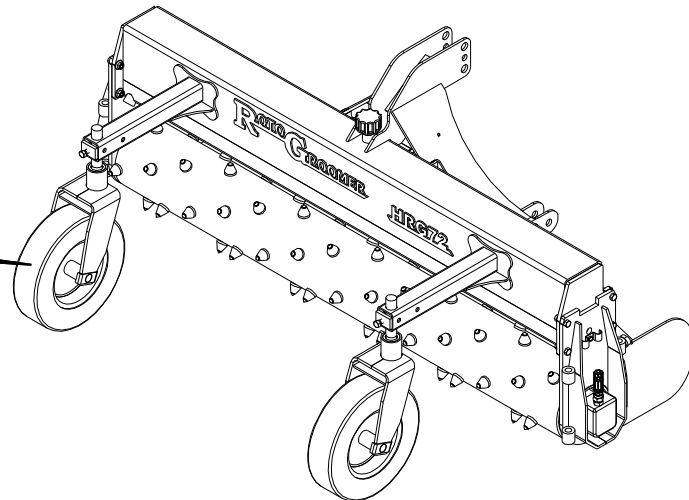
Smooth Roll



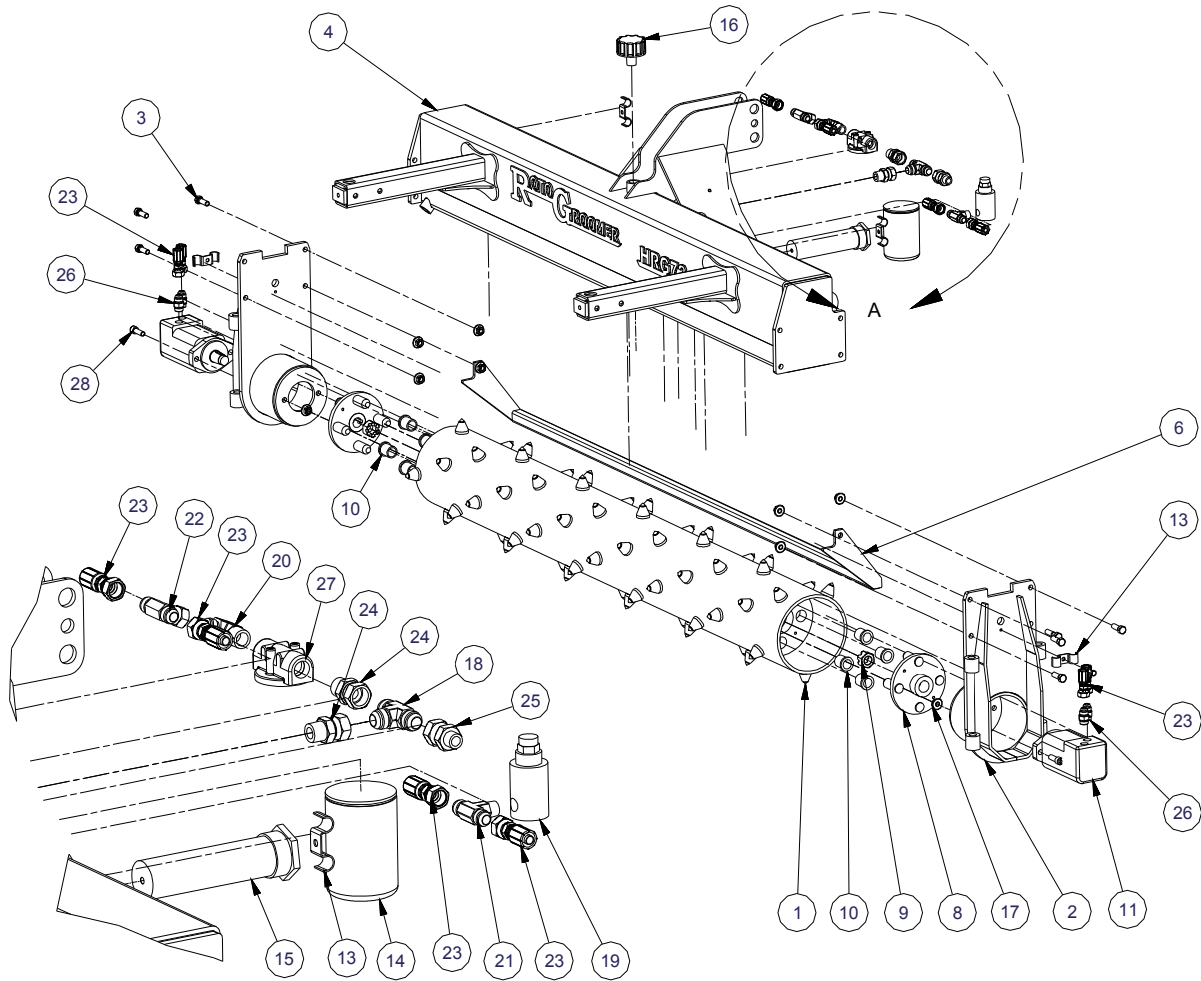
Bar Reel



Gauge Wheels

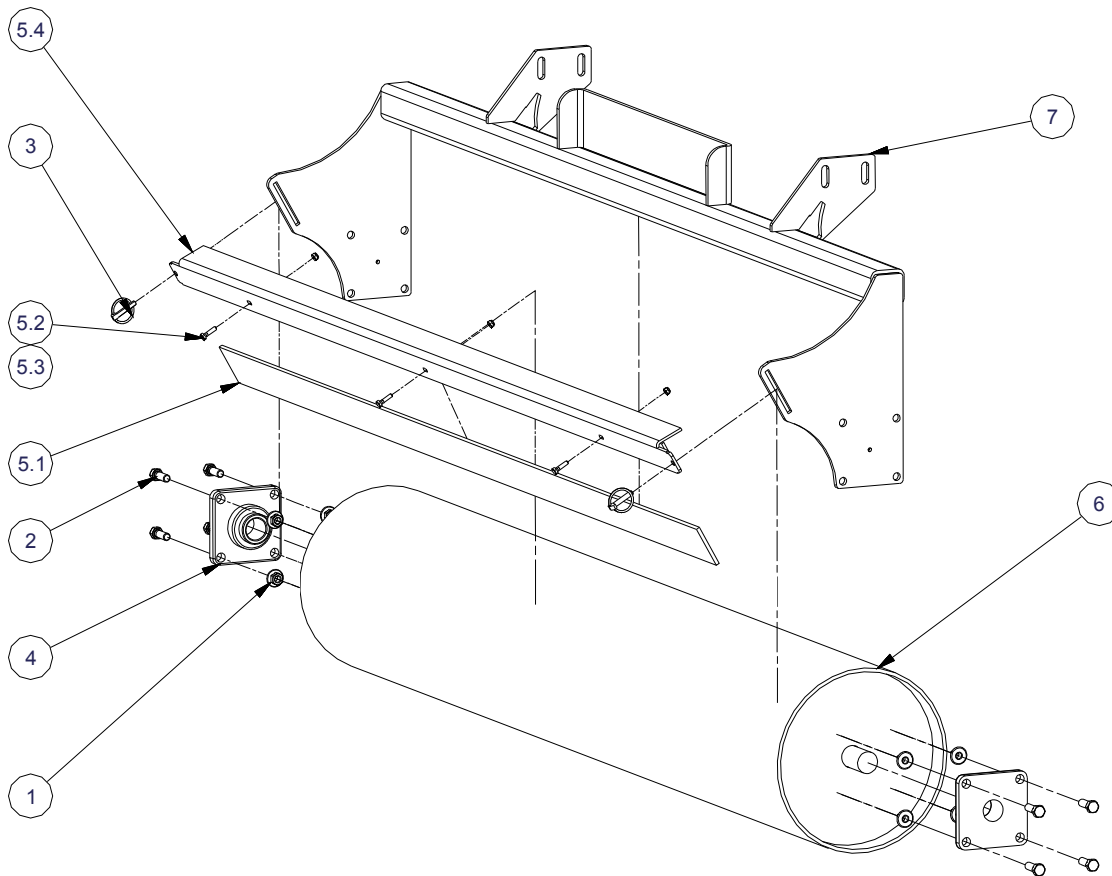


Parts List (main assembly)



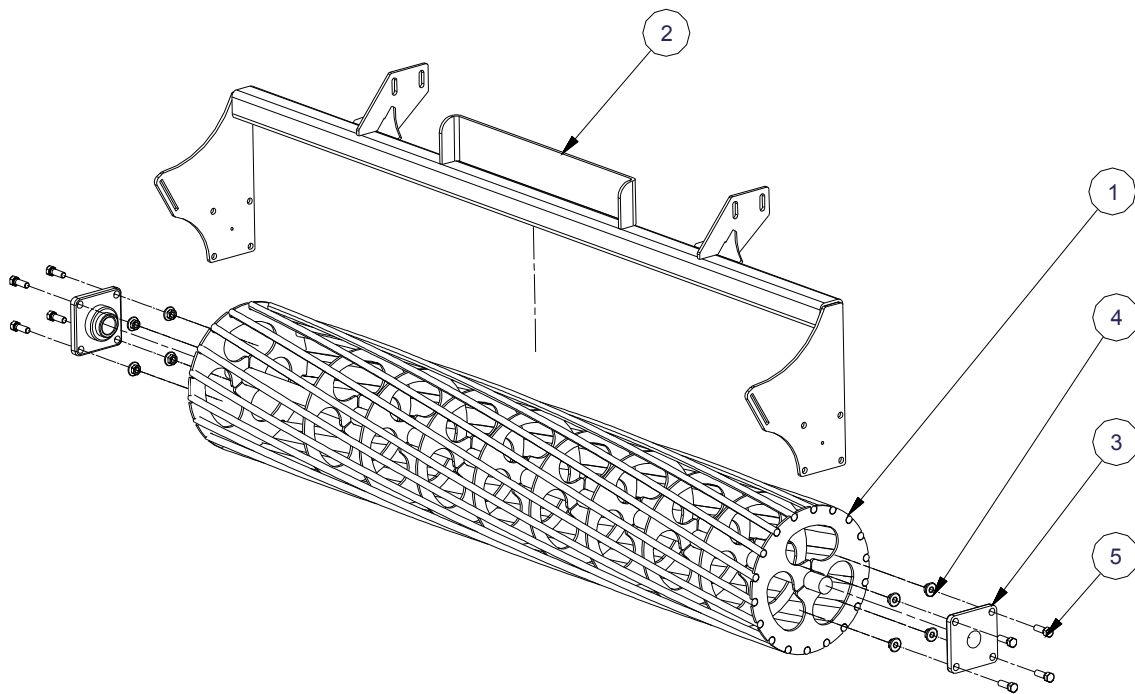
Parts List				Parts List			
ITEM	QTY	PART NUMBER	DESCRIPTION	ITEM	QTY	PART NUMBER	DESCRIPTION
1	1	HRG01__	Rotor	15	1	S-25-100	Tank Screen
2	2	HRG02	Hyd Motor Mount	16	1	ABS40N12	Filler Cap
3	6	12112	Bolt	17	4	12FSLN	Flange Nut
4	1	HRG03__	Roto Rake Frame Weldment	18	1	5707*12	Tee
5	8	12FSLN	Flange Nut	19	1	RL50	Relief Valve
6	1	HRG05__	Safety Bar	20	1	5405*10*12	Elbow
7	2	12*2	Hex Bolt	21	1	5605*10	Jic & Male Pipe Tee
8	2	HRG04	Rotor Drive Adaptor	22	1	5707*10	Jic & Swivel Tee
9	2	14163-000	1"x20 Casulated Nut	23	8	08U610	Hose End 1/2 10
10	8	MF1-1620-24	Flange Bearing	24	2	9100*12*12	Swivel
11	2	104-4100-006	2000 series hyd motor 2 bolt	25	1	9100*12*8	Swivel
12	1	5161	Hex Bolt	26	4	5315*10	Fitting
13	6	C-1039	Hose Clip	27	1	SP-15-10	Filter Complete
14	1	SPE-15-10	Filter	28	4	12112CSH	Socket Head Cap Screw

Parts List (smooth roll & scraper)



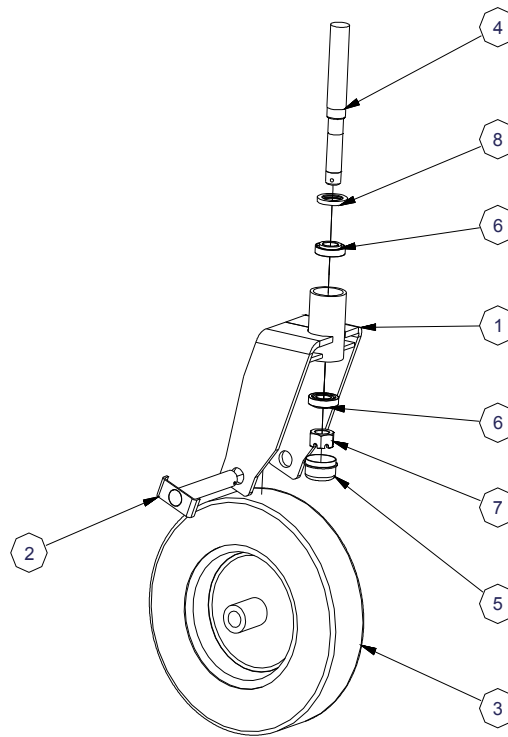
Parts List			
ITEM	QTY	PART NUMBER	DESCRIPTION
1	8	12FSLN	Flange Nut
2	8	12112	Bolt
3	2	385503	5/16 x 1 1/4 Lynch Pin
4	2	SAF208-24G	Bearing
5.1	1	HRG06__	UHMW Scraper
5.2	3	14*1	1/4x1 NC Nut
5.3	3	14CLN	1/4 Lock Nut
5.4	1	HRG07__	Smooth Roll Scraper Angle
6	1	HRG08__	Roller (Inches Wide)
7	1	HRG09__	Reel Mount

Parts List (Reel)



Parts List			
ITEM	QTY	PART NUMBER	DESCRIPTION
1	1	R_ _	Roller (Inches Wide)
2	1	HRG09_ _	Reel Mount
3	2	SAF208-24G	Bearing
4	8	12FSLN	Flange Nut
5	8	12112	Bolt

Parts List (wheel)



Swivel Gauge Wheel
Part # HRGSGW

Parts List			
ITEM	QTY	PART NUMBER	DESCRIPTION
1	1	HRG10	Swivel Wheel Frame
2	1	HRG11	Swivel Wheel Pin
3	1	120031	Wheel Segmented
4	1	S010001041008HR	Spindle
5	1	D-1000	Dust Cap
6	2	L44643 / L44610	Tapered Roller Bearing
7	1	1CNF	Slotted Hex Nut
8	1	TT1000	SEAL

WARRANTY



All new Reist machinery is warranted to be free from defects in material or workmanship, which may cause failure under normal usage and service when used for the purpose, intended, for a period of 12 months. This warranty applies only to a new Reist product, there being no warranty of any nature in respect to new products that have been modified or altered, repaired, neglected, or used in any way, which, in the opinion of Reist adversely affects its performance.

In the event of failure of a part or parts, and upon inspection, Reist is satisfied that failure is due to defective material or workmanship within 12 calendar months, from the date of delivery to an end user, such defective part or parts will be repaired or replaced by Reist at his business location. It is the responsibility of the buyer, at his expense, to transport the machine or equipment to the manufacturer service shop or, to an authorized service depot or, alternatively, to reimburse Reist for any travel or transportation expense involved in fulfilling this warranty.

When requested by Reist, part or parts shall be returned for inspection, transportation prepaid, to a place designated by Reist. **IN NO EVENT SHALL THE BUYER BE ENTITLED TO RECOVER FOR INCIDENTAL OR CONSEQUENTIAL DAMAGES, INCLUDING, BUT NOT LIMITED TO, LOSS OF PRODUCT, INCONVENIENCE, RENTAL OR REPLACEMENT EQUIPMENT, LOSS OF PROFIT, OR OTHER COMMERCIAL LOSS.**

This warranty becomes void and null if the equipment is modified, breaks down as the result of an accident, is not operated according to manufacturers recommendations, damaged by negligence or if maintenance has not been carried out as specified.

THIS WARRANTY IS NOT TRANSFERABLE

Proof of Purchase

Date of purchase (yyyy mm dd)		Model		Serial #	
Dealer purchased from		City		State or Province	Country
First Name		Last Name		Phone # (include area code)	
Address				State or Province	Country
City	Postal Code	Reist Industries Inc. 100 Union St. Elmira Ontario N3B 2Z2		519-669-1501	

Proof of Purchase

Date of purchase (yyyy mm dd)		Model		Serial #	
Dealer purchased from		City		State or Province	Country
First Name		Last Name		Phone # (include area code)	
Address				State or Province	Country
City	Postal Code	Reist Industries Inc. 100 Union St. Elmira Ontario N3B 2Z2		519-669-1501	

**Reist Industries Inc. Ont.
100 Union St., Elmira
Ontario, Canada, N3B 2Z2
www.reistindustries.com**